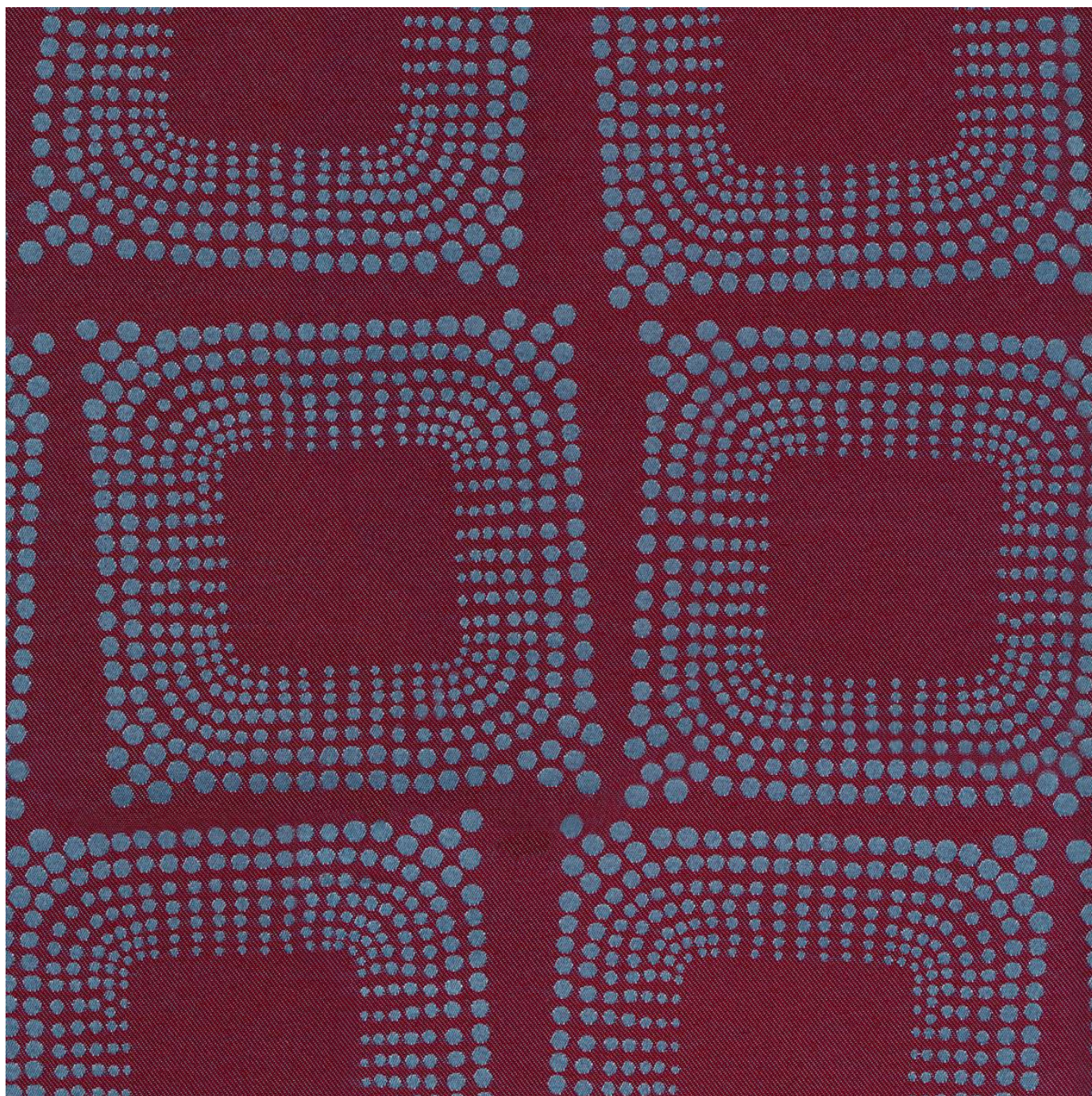


UNIVERSAL

Fabrics » Woven Fabrics



Brand: **Crypton**

1300 306 399

info@baresque.com.au

baresque.com.au

1 of 5

UNIVERSAL

Fabrics » Woven Fabrics



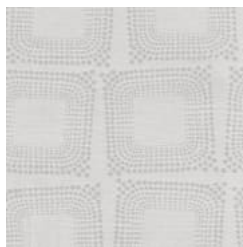
94 BLACKBIRD



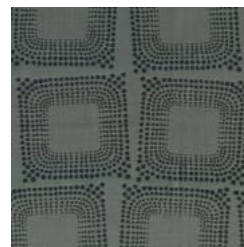
17 BORDEAUX



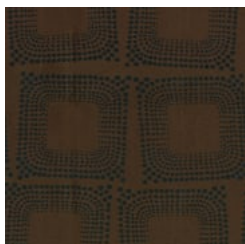
44 CIDER



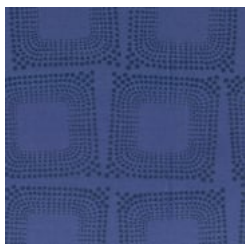
91 GREY



908 INKWELL



84 MESQUITE



3003 SHORELINE



31 SKY



205 WILLOWTREE



universal_promo-2.jpg



universal_promo-1.jpg

UNIVERSAL

Fabrics » Woven Fabrics

Universal is a 140cm wide woven upholstery featuring an organic box shape made up of smaller dots that's available in 10 colours. Suitable for indoor

✓ **Bleach Cleanable**

✓ **Moisture Barrier**

Description CRYPTON is a permanent moisture, soil resistance and anti-microbial protection backing.

Roll Size 140cm x Approx 45m - 55m - Available by the lineal metre.

Composition CRYPTON - 100% polyester

Abrasion 105,000+ double rubs Wyzenbeek

Pattern Repeat Size 53.4cm V / 34.6cm H

Fire Rating Tested in accordance with AS1530.3

Spread of Flame Index - 0

Smoke Developed Index - 5

Warranty 2-year warranty. Visit baresque.com.au/warranty for complete details.

Lead Time

- 2-weeks (approx.) from Wednesday, subject to stock availability.
- Additional 1-week for Western Australia.
- Express delivery is available subject to a surcharge. Contact Baresque for details and pricing.

UNIVERSAL

Fabrics » Woven Fabrics

Care Instructions

Always use a clean, white, soft cloth.

Prepare a mixture of 1/3 Napisan and 2/3 Fab. Combine the mixture with water to make a paste about the consistency of soft margarine i.e. not too runny. Apply using a soft bristle brush. Leave for 10 minutes.

Use a brush and clean, warm water to remove the paste being sure to renew the water so that it remains clean.

Never use stiff bristles or wire brushes, as they may damage the fabric. To prevent soil build-up, frequent vacuuming is recommended.

Using a cloth to pat dry will help eliminate watermarks.

For more difficult stains, dampen a soft white cloth with a solution of household bleach (10% bleach / 90% water). Rub gently. Rinse with a water dampened cloth to remove bleach concentration.

Always test in an inconspicuous area first. If care instructions don't deliver the expected results, cease cleaning method immediately and contact Baresque for assistance.

UNIVERSAL

Fabrics » Woven Fabrics

Colour & Finish Options