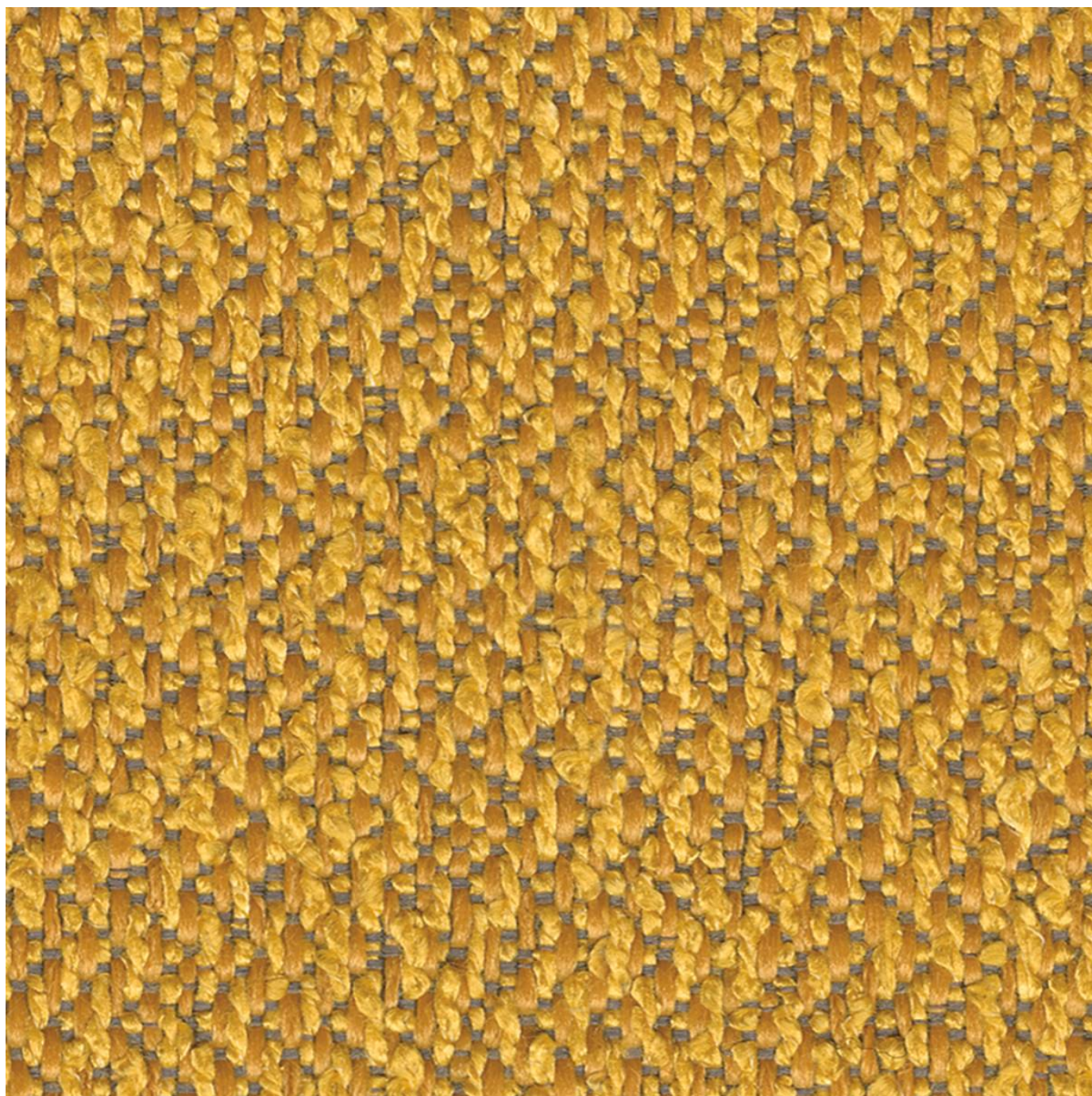


# VENICE

Fabrics » Woven Fabrics

---



Brand: **Crypton**

1300 306 399

[info@baresque.com.au](mailto:info@baresque.com.au)

[baresque.com.au](http://baresque.com.au)

1 of 4

# VENICE

Fabrics » Woven Fabrics

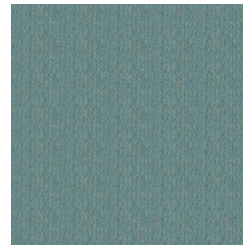
## COLOURWAY CARD



CW2483-01 GOLDEN  
ROD



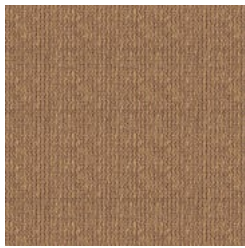
CW2483-03 ADMIRAL



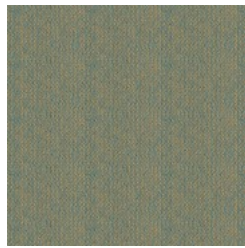
CW2483-07 SEA  
GREEN



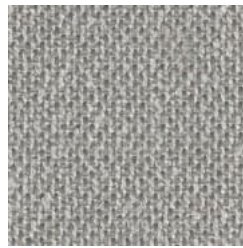
CW2483-22 OATMEAL



CW2483-24  
CORNFIELD



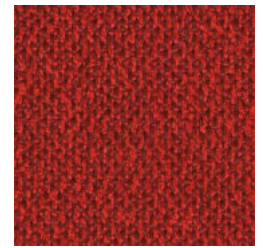
CW2483-29 AVOCADO



CW2483-32 ICE



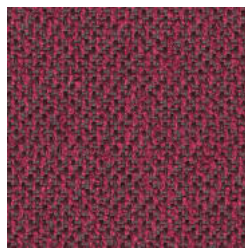
CW2483-33 SPROUT



CW2483-34 RED HOT



CW2483-35  
SUNFLOWER



CW2483-36 CERISE



CW2483-37 DUST



CW2483-38 PECAN



CW2483-39 COCONUT



CW2483-40 RYE



CW2483-41  
EGGPLANT

# VENICE

Fabrics » Woven Fabrics

Venice is a 137cm wide crypton upholstery that is moisture, soil resistant and anti-microbial that's available in 16 colours. Suitable for indoor.

Description	CRYPTON is a permanent moisture, soil resistance and anti-microbial protection backing.
Roll Size	137cm x 50m - Available by the lineal metre.
Composition	CRYPTON - 52% polyester / 47% Rayon / 1% Nylon
Abrasion	60,000 + double rubs Wyzenbeek
Pattern Repeat Size	N/A
Fire Rating	This product can be treated with a fire retardant that will ensure it meets Australian Standard 1530.3. Contact Baresque for details.
Warranty	2-year warranty. Visit <a href="https://baresque.com.au/warranty">baresque.com.au/warranty</a> for complete details.
Lead Time	<ul style="list-style-type: none"><li>• 2-weeks (approx.) from Wednesday, subject to stock availability.</li><li>• Additional 1-week for Western Australia.</li><li>• Express delivery is available subject to a surcharge. Contact Baresque for details and pricing.</li></ul>
Care Instructions	<p>Mix 5 parts water with 1 part of an enzyme laundry detergent to have a mixture that works well on all stains.</p> <p>Most liquid spills simply blot off the surface with a dry towel. If a stains remains, follow these simple steps:</p> <ol style="list-style-type: none"><li>1. Remove excess soil, and apply the soap mixture on the stained area</li><li>2. Allow solution to remain on stain for 1 minute</li><li>3. Blot up the stain with a dry, clean towel, rinse any remaining soap and blot the area again</li></ol> <p>Repeat these steps if a spot still remains. If agitation is necessary, spray the stained area and work the stain using a soft brush or edge of spoon from outside of spot toward the middle. Blot and rinse to remove any soap.</p>

# VENICE

Fabrics » Woven Fabrics

---

## Colour & Finish Options