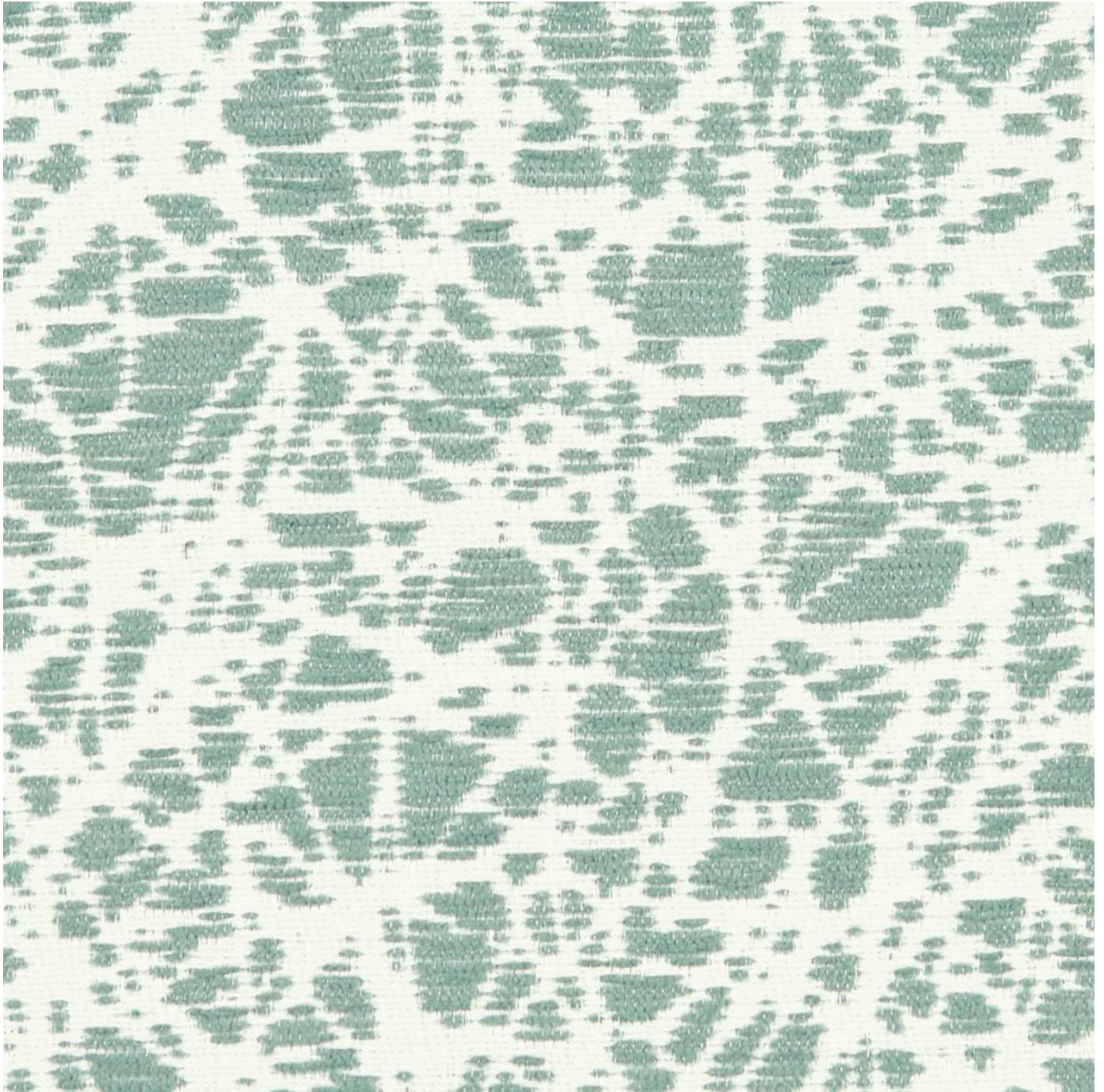


WABI SABI

Fabrics » Woven Fabrics



Brand: **Nanotex**

1300 306 399

info@baresque.com.au

baresque.com.au

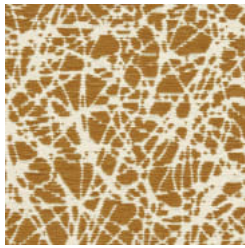
1 of 5

WABI SABI

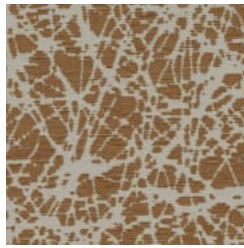
Fabrics » Woven Fabrics



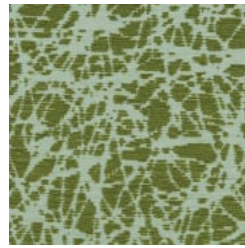
COLOURWAY CARD



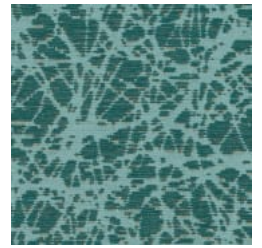
1010464 AMBER



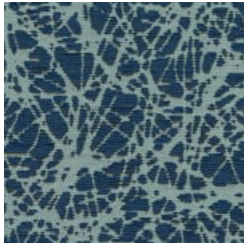
1010465 FIELDSTONE



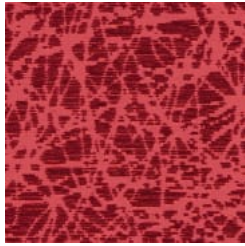
1010466 JADE



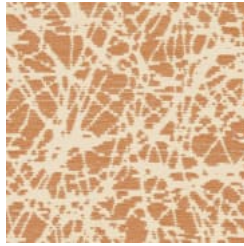
1010467 LAGOON



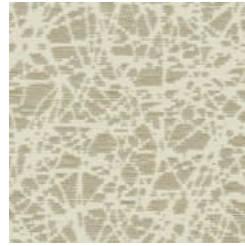
1010468 INDIGO



1010469
POMEGRANATE



1010470 CHERRY
BLOSSOM



1010471 PUMICE



1010472 VELLUM



1010473 CRYSTAL



wabisabi_promo2.jpg



wabisabi_promo3.jpg

WABI SABI

Fabrics » Woven Fabrics

Wabi Sabi is a 137cm wide woven upholstery that is inspired by Kintsugi - the Japanese art of repairing broken pottery. Available in 10 colourways.

✓ Moisture Repellant

Description Wabi Sabi is inspired by Kintsugi - the Japanese art of repairing broken pottery with gold, thus respecting the history of the object rather than disguising it. Cracks and crevices re-mended reveal Wabi Sabi's true beauty.

Roll Size 137cm x Approx 45m - Available by the lineal metre

Composition CRYPTON - 88% polyester, 8% post industrial recycled polyester, 4% post consumer recycled polyester

Abrasion 51,000+ Double Rubs (Wyzenbeek)

Pattern Repeat Size 40.6cm V / 24cm H

Environmental Info Greenguard Certifications contributes towards LEED credits for low-emitting furniture and ensures compliance with Business and Institutional Furniture Manufacturers Association (BIFMA) X7.1 standard and BIFMA e3 credit 7.6.1.

Greenguard Gold Certification standard includes:

* Health-based criteria for additional chemicals and requires lower total VOC emissions levels to help ensure that products are acceptable for use in environments like schools and healthcare facilities.

* Products that also comply with requirements of the state of California's Department of Public Health (CDPH) "Standard Method for the Test and Evaluation of Volatile Organic Chemical Emissions from Indoor Sources Using Environmental Chambers, Version 1.2 (2017)" (also know as California Section 01350).

* Products that are compliant with the BIFMA X7.1 standard and BIFMA e3 credits 7.6.1, 7.6.2, and 7.6.3.

Fire Rating This product can be treated with a fire retardant that will ensure it meets Australian Standard 1530.3. Contact Baresque for details.

Warranty 2-year warranty. Visit [baresque.com.au/warranty](https://www.baresque.com.au/warranty) for complete details.

WABI SABI

Fabrics » Woven Fabrics

Lead Time

- 2-weeks (approx.) from Wednesday, subject to stock availability.
 - Additional 1-week for Western Australia.
 - Express delivery is available subject to a surcharge. Contact Baresque for details and pricing.
-

Care Instructions

Always use a clean, white, soft cloth.

Prepare a mixture of 1/3 Napisan and 2/3 Fab. Combine the mixture with water to make a paste about the consistency of soft margarine i.e. not too runny. Apply using a soft bristle brush. Leave for 10 minutes.

Use a brush and clean, warm water to remove the paste being sure to renew the water so that it remains clean.

Never use stiff bristles or wire brushes, as they may damage the fabric. To prevent soil build-up, frequent vacuuming is recommended.

Using a cloth to pat dry will help eliminate watermarks.

For more difficult stains, dampen a soft white cloth with a solution of household bleach (10% bleach / 90% water). Rub gently. Rinse with a water dampened cloth to remove bleach concentration.

Always test in an inconspicuous area first. If care instructions don't deliver the expected results, cease cleaning method immediately and contact Baresque for assistance.

WABI SABI

Fabrics » Woven Fabrics

Colour & Finish Options