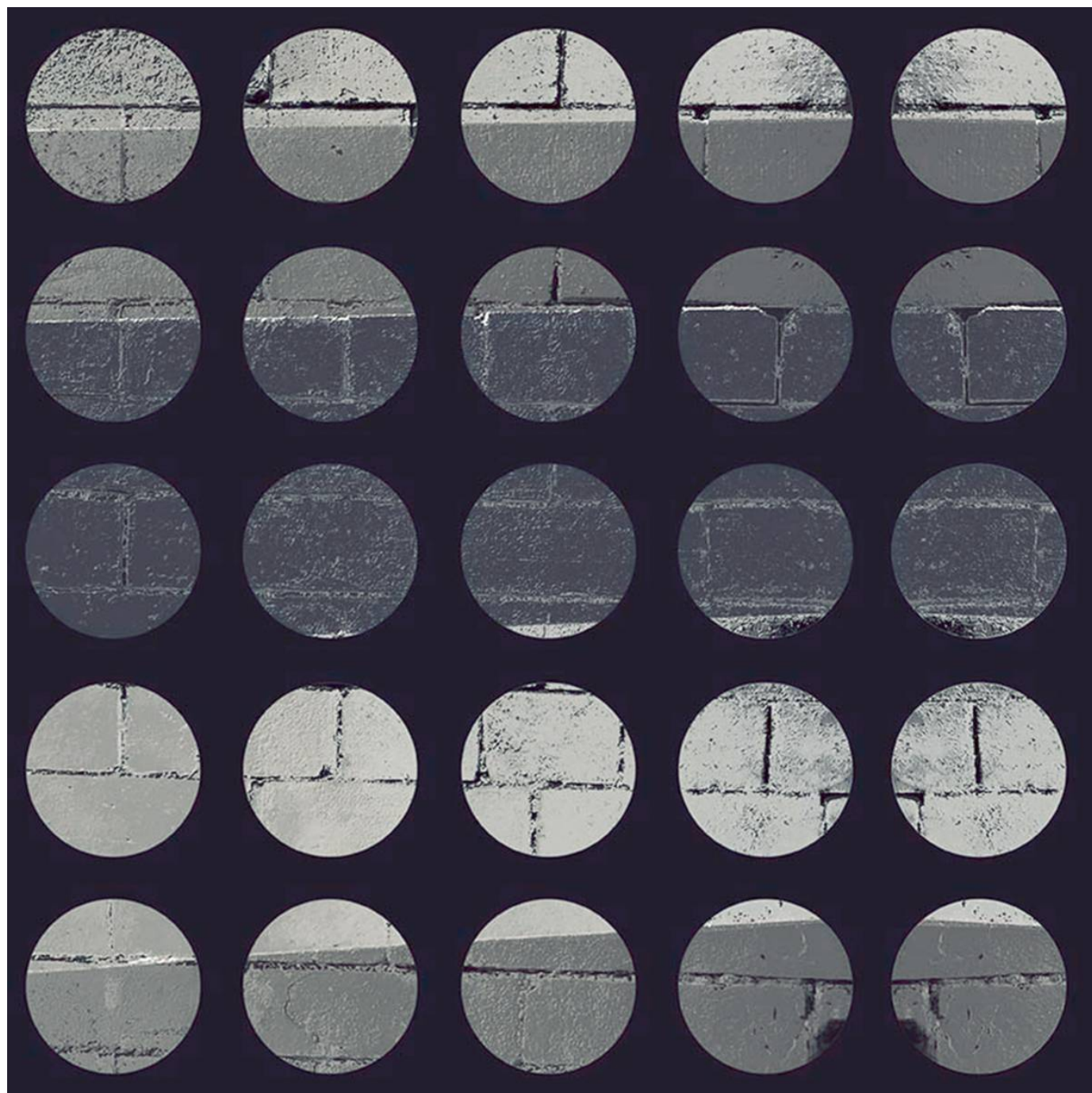


WALL UNDERGROUND

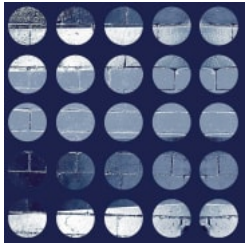
Fabrics » Woven Fabrics



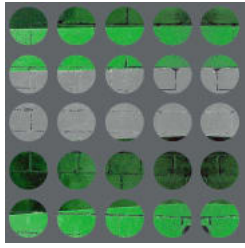
Brand: **Panaz**

WALL UNDERGROUND

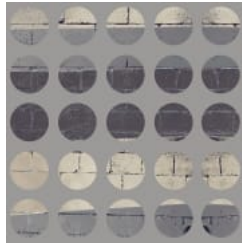
Fabrics » Woven Fabrics



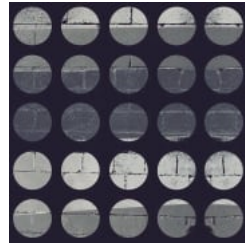
105 INDIGO



250 GREEN/GREY



583 GREY/STONE



949 NOIR

WALL UNDERGROUND

Fabrics » Woven Fabrics

Wall - Underground is a printed fabric inspired on graffiti and the street art of New York that's available in 4 colourways. Suitable for indoors.

✓ **Printed**

Description	Taking inspiration from graffiti and the street art of New York, Underground is intrinsically stylish with 3 current and contemporary designs for Hospitality and Workspace environments.
Roll Size	e79bdacd-44d6-458f-a9a5-b04c344e056a
Composition	This printed design is available in a full range of basecloths. For more information on the technical properties, enduses and flammability ratings of our basecloths you can download our Panaz Basecloth Guide on the DOWNLOADS tab.
Abrasion	N/A
Pattern Repeat Size	28.5cm V / 45.3cm H
Fire Rating	This product can be treated with a fire retardant that will ensure it meets Australian Standard 1530.3. Contact Baresque for details.
Warranty	2-year warranty. Visit baresque.com.au/warranty for complete details.
Lead Time	<ul style="list-style-type: none">• 4-weeks (approx) from Wednesday subject to stock availability.• Additional 1-week for Western Australia.• Express delivery is available subject to a surcharge. Contact Baresque for details and pricing.

WALL UNDERGROUND

Fabrics » Woven Fabrics

Care Instructions

Always use a clean, white, soft cloth.

Prepare a mixture of 1/3 Napisan and 2/3 Fab. Combine the mixture with water to make a paste about the consistency of soft margarine i.e. not too runny. Apply using a soft bristle brush. Leave for 10 minutes.

Use a brush and clean, warm water to remove the paste being sure to renew the water so that it remains clean.

Never use stiff bristles or wire brushes, as they may damage the fabric. To prevent soil build-up, frequent vacuuming is recommended.

Using a cloth to pat dry will help eliminate watermarks.

For more difficult stains, dampen a soft white cloth with a solution of household bleach (10% bleach / 90% water). Rub gently. Rinse with a water dampened cloth to remove bleach concentration.

Always test in an inconspicuous area first. If care instructions don't deliver the expected results, cease cleaning method immediately and contact Baresque for assistance.

WALL UNDERGROUND

Fabrics » Woven Fabrics

Colour & Finish Options