

# WONDER

Fabrics » Woven Fabrics



Brand: **Crypton**

1300 306 399

[info@baresque.com.au](mailto:info@baresque.com.au)

[baresque.com.au](http://baresque.com.au)

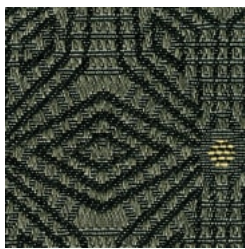
1 of 5

# WONDER

Fabrics » Woven Fabrics



406 BUNGALOW



908 INKWELL



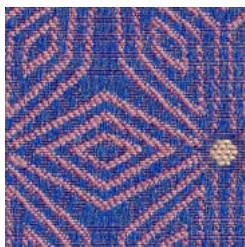
902 LITHIUM



84 MESQUITE



6003 NATURAL



1009 PURPLE



3003 SHORELINE



wonder\_promo-1.jpg

# WONDER

Fabrics » Woven Fabrics

Wonder is a 142cm wide woven upholstery with a pattern that looks like either three dimensional cube or geometric flower. Available in 7 colours.

✓ **Bleach Cleanable**

✓ **Moisture Barrier**

**Description** CRYPTON is a permanent moisture, soil resistance and anti-microbial protection backing.

**Roll Size** 142cm x Approx 45m - 55m - Available by the lineal metre

**Composition** CRYPTON - 100% polyester

**Abrasion** 100,000+ double rubs Wyzenbeek

**Pattern Repeat Size** 8.3cm V / 4.8cm H

**Fire Rating** Tested in accordance with AS1530.3

Spread of Flame Index - 0

Smoke Developed Index - 5

**Warranty** 2-year warranty. Visit [baresque.com.au/warranty](https://baresque.com.au/warranty) for complete details.

**Lead Time**

- 2-weeks (approx.) from Wednesday, subject to stock availability.
- Additional 1-week for Western Australia.
- Express delivery is available subject to a surcharge. Contact Baresque for details and pricing.

# WONDER

Fabrics » Woven Fabrics

---

## Care Instructions

Always use a clean, white, soft cloth.

Prepare a mixture of 1/3 Napisan and 2/3 Fab. Combine the mixture with water to make a paste about the consistency of soft margarine i.e. not too runny. Apply using a soft bristle brush. Leave for 10 minutes.

Use a brush and clean, warm water to remove the paste being sure to renew the water so that it remains clean.

Never use stiff bristles or wire brushes, as they may damage the fabric. To prevent soil build-up, frequent vacuuming is recommended.

Using a cloth to pat dry will help eliminate watermarks.

For more difficult stains, dampen a soft white cloth with a solution of household bleach (10% bleach / 90% water). Rub gently. Rinse with a water dampened cloth to remove bleach concentration.

Always test in an inconspicuous area first. If care instructions don't deliver the expected results, cease cleaning method immediately and contact Baresque for assistance.

---

# WONDER

Fabrics » Woven Fabrics

---

## Colour & Finish Options