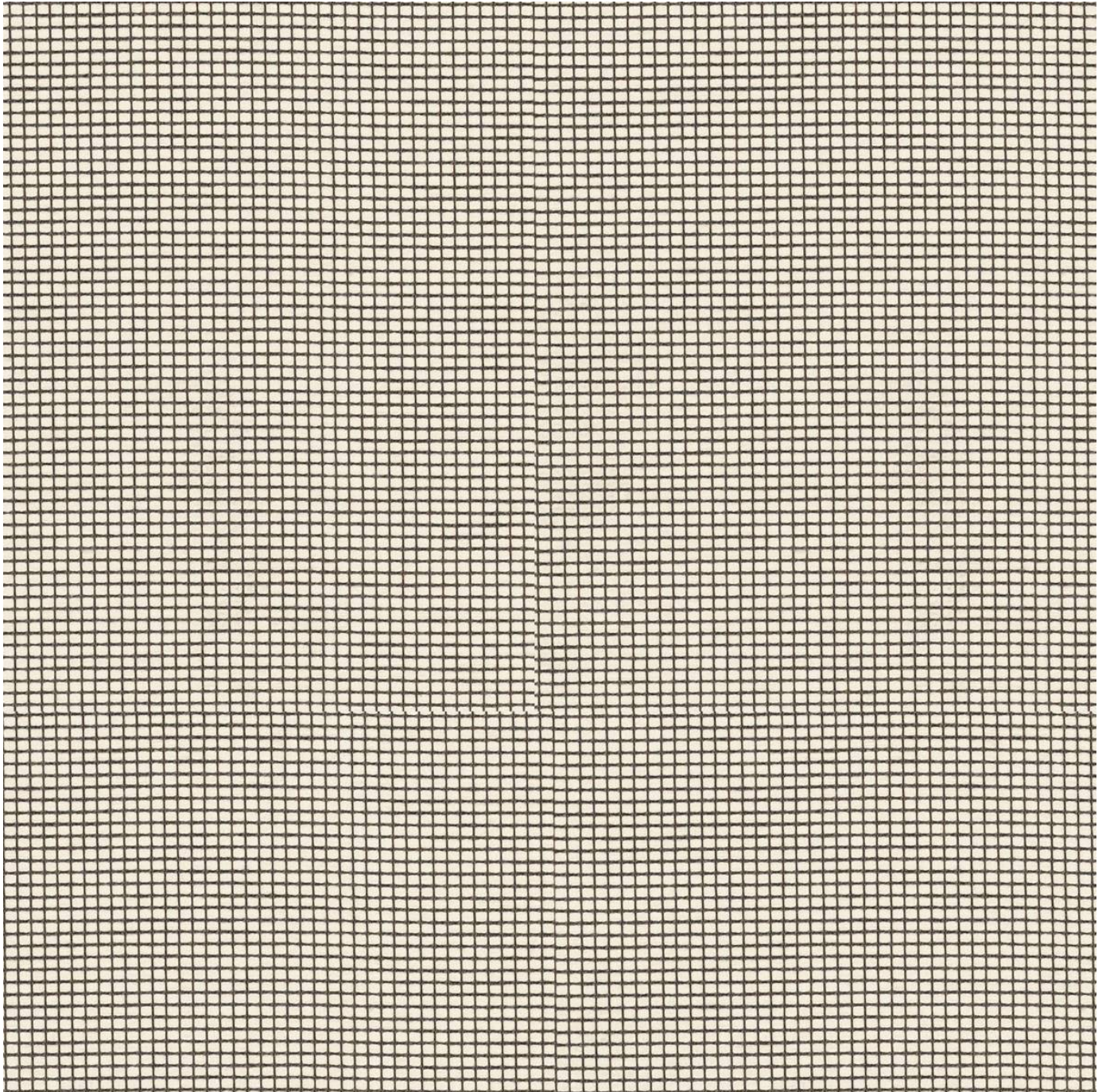


# ZOOM

Fabrics » Woven Fabrics

---



Brand: **CF Stinson**

1300 306 399

[info@baresque.com.au](mailto:info@baresque.com.au)

[baresque.com.au](http://baresque.com.au)

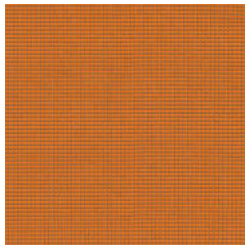
1 of 5

# ZOOM

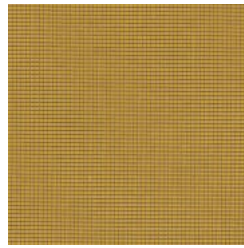
Fabrics » Woven Fabrics

## COLOURWAY CARD

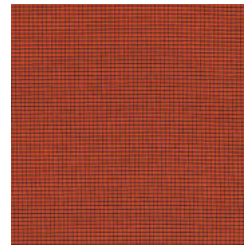
COLOURWAY CARD



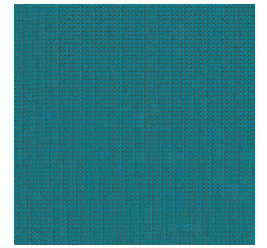
63105 BURST



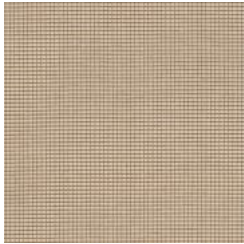
63107 BUZZ



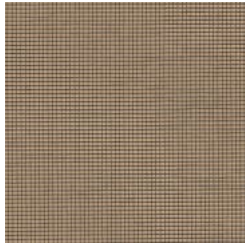
63113 CALIENTE



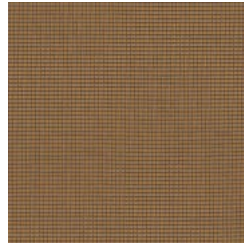
63119 CRUISE



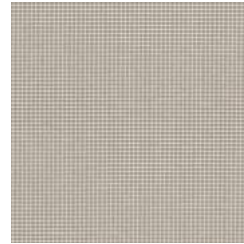
63106 FORWARD



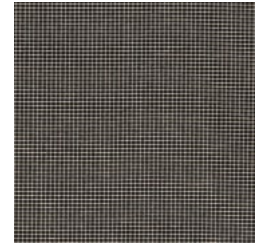
63108 GLIDE



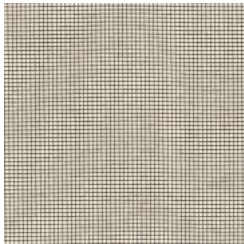
63109 GROUNDED



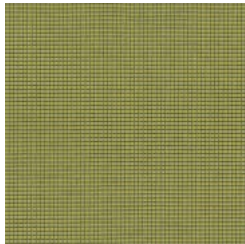
63114 NEUTRAL



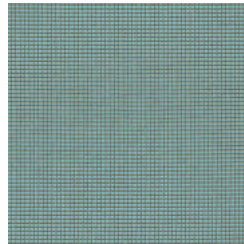
63118 NIGHT OWL



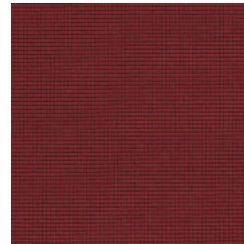
63110 OPEN AIR



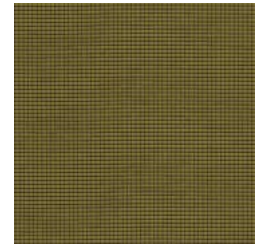
63111 REFRESH



63112 SKY HIGH



63117 SPARK



63115 SPLENDOR



63116 SURGE

# ZOOM

Fabrics » Woven Fabrics

Zoom is a 137cm wide woven upholstery that's bleach cleanable and stain resistant. Available in 15 colours. Suitable for indoors.

## ✓ Bleach Cleanable

Roll Size 137cm x Approx 50m - Available by the lineal metre

Composition 100% polyester

Abrasion 100,000+ double rubs Wyzenbeek

Pattern Repeat Size 0.4cm V / 0.4cm H

## Environmental Info

Greenguard Certifications contributes towards LEED credits for low-emitting furniture and ensures compliance with Business and Institutional Furniture Manufacturers Association (BIFMA) X7.1 standard and BIFMA e3 credit 7.6.1.

Greenguard Gold Certification standard includes:

\* Health-based criteria for additional chemicals and requires lower total VOC emissions levels to help ensure that products are acceptable for use in environments like schools and healthcare facilities.

\* Products that also comply with requirements of the state of California's Department of Public Health (CDPH) "Standard Method for the Test and Evaluation of Volatile Organic Chemical Emissions from Indoor Sources Using Environmental Chambers, Version 1.2 (2017)" (also know as California Section 01350).

\* Products that are compliant with the BIFMA X7.1 standard and BIFMA e3 credits 7.6.1, 7.6.2, and 7.6.3.

Fire Rating Tested in accordance with AS1530.3

Spread of Flame Index - 0

Smoke Developed Index - 5

Warranty 2-year warranty. Visit [baresque.com.au/warranty](https://www.baresque.com.au/warranty) for complete details.

Lead Time

- 2-weeks (approx.) from Wednesday, subject to stock availability.
- Additional 1-week for Western Australia.
- Express delivery is available subject to a surcharge. Contact Baresque for details and pricing.

# ZOOM

Fabrics » Woven Fabrics

---

## Care Instructions

Always use a clean, white, soft cloth.

Clean in situ using a damp cloth and mild detergent. Sponge down afterwards with a clean, damp cloth.

Using a cloth to pat dry will help eliminate watermarks.

Ensure the pile is brushed back to its natural direction.

Upholstered furniture should be regularly vacuumed or brushed with a soft nylon brush to remove grit or dust, which may damage the pile.

Never use stiff bristles or wire brushes, as they may damage the fabric.

For more difficult stains, dampen a soft white cloth with a solution of household bleach (10% bleach / 90% water). Rub gently. Rinse with a water dampened cloth to remove bleach concentration.

Always test in an inconspicuous area first. If care instructions don't deliver the expected results, cease cleaning method immediately and contact Baresque for assistance.

---

# ZOOM

Fabrics » Woven Fabrics

---

## Colour & Finish Options