

# BASIC WOOD

Wallcoverings » Architectural Film



Brand: **Reatec**

Applications: **Walls, Joinery**

1300 306 399

info@baresque.com.au

**baresque.com.au**

1 of 6

# BASIC WOOD

Wallcoverings » Architectural Film

Provide a fresh new look for your space with Reatec Class Wood Collection, with a variety of patterns and wood tones to suit your project requirements

## ✓ Bleach Cleanable

**Description** Reatec is a durable and realistic architectural film with a pressure sensitive adhesive and air removal system backing. Utilising state of the art, multi layer printing and minute embossing, its appearance is almost indistinguishable from real wood or stone. Reatec is stain and solvent/chemical resistant, anti-bacterial, anti-mould, colorfast, washable, scrubbable, and abrasion resistant. A pdf with full Reatec Test Results can be found on the product Downloads tab on the website. Reatec can be stretched to cover the corners and curves and is suitable for both indoor and outdoor uses including kitchens and bathrooms. Go to the DOWNLOADS tab for our Reatec Additional Spec Sheet and Installation Guide.

**Composition** Reatec is a durable and realistic architectural film with a pressure sensitive adhesive and air removal system backing 350 g/m<sup>2</sup>

**Pattern Repeat Size** N/A

**Roll Size** 122cm wide x 50m - Available by the lineal metre

**Fire Rating** Tested in accordance with AS ISO 9705 2003 for the purpose of determining the Group Number classification required by the Building Code of Australia for the control of fire spread on interior wall and ceiling linings.

Classification - Group 1  
Specific Extinction - Less than 250m<sup>2</sup>/kg

**Lead Time**

- 2-weeks (approx.) from Wednesday, subject to stock availability.
- Additional 1-week for Western Australia.
- Express delivery is available subject to a surcharge. Contact Baresque for details and pricing.

**Suggested Installation**

Reatec is a specialised product and should only be installed by a trained installer.

It is strongly recommended that the installation instructions from our product downloads are read and understood.

As Reatec is a thin film, the substrate should be prepared as smooth as possible to avoid visible unevenness.

Reatec can be installed and repaired on-site, resulting in almost no downtime for both interior and exterior applications.

Feel free to contact Baresque with any installation questions.

# BASIC WOOD

Wallcoverings » Architectural Film

---

## Care Instructions

Wipe material with a clean, soft cloth dampened with a mild solution of liquid detergent and warm water. Repeat using only clean water, then dry with a lint free cloth.

Avoid using wax polishes, solvents or concentrated abrasives.

For more difficult stains, dampen a soft white cloth with a solution of household bleach (10% bleach / 90% water). Rub gently. Rinse with a water dampened cloth to remove bleach concentration.

Always test in an inconspicuous area first. If care instructions don't deliver the expected results, cease cleaning method immediately and contact Baresque for assistance.

---

## Warranty

2-year warranty. Visit [baresque.com.au/warranty](https://www.baresque.com.au/warranty) for complete details.

---

# BASIC WOOD

Wallcoverings » Architectural Film

## Colour & Finish Options



BC5451



BC5452



BC5453



BC5454



BC5455



BC5456



BC5457



BC5458



BC5460



BC5461



BC5462



BC5463



BC5464



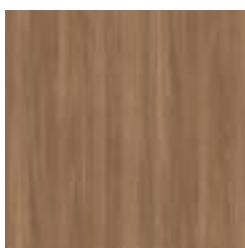
BC5465



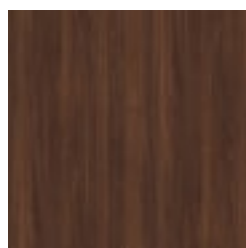
BC5466



BC5467



BC5468



BC5469



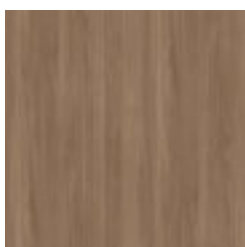
BC5470



BC5471



BC5472



BC5473



BC5474



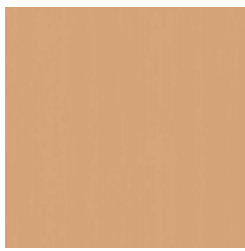
BC5475



BC5476

# BASIC WOOD

Wallcoverings » Architectural Film



BC5477



BC5478



BC5479



BC5480



BC5481



BC5482



BC5483



BC5484



BC5485



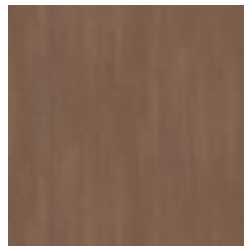
BC5486



BC5487



BC5488



BC5489



BC5490



BC5491



BC5492



BC5493



BC5494



BC5495



BC5496



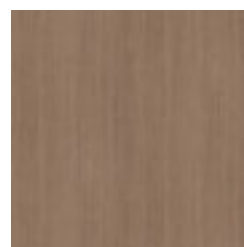
BC5497



BC5498



BC5499



BC5500



BC5501

# BASIC WOOD

Wallcoverings » Architectural Film

---



BC5502



BC5503



BC5504



BC5505



BC5506



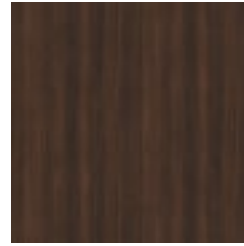
BC5507



BC5508



BC5509



BC5510