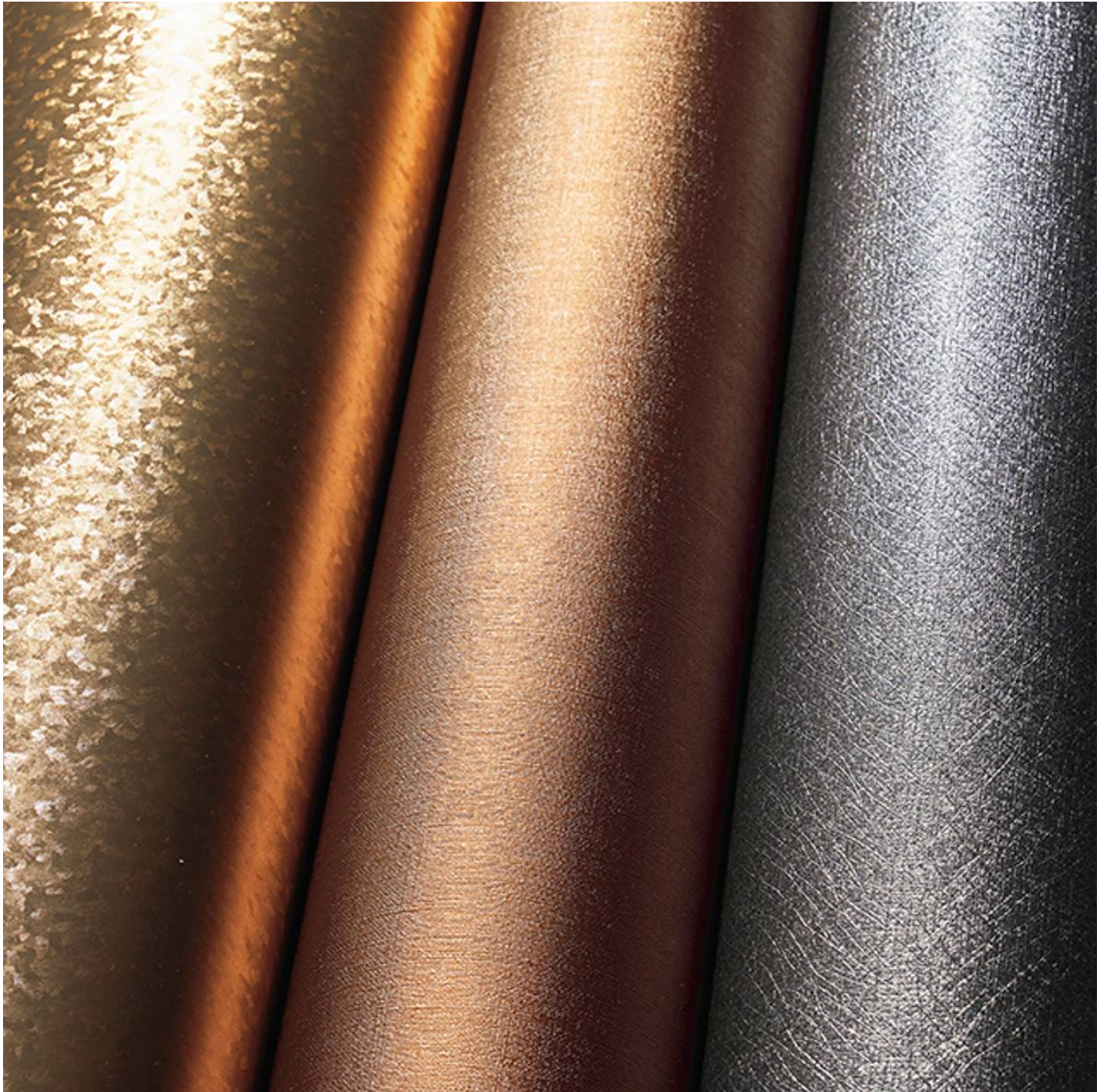


METALLIC

Wallcoverings » Architectural Film



Brand: **Reatec**

METALLIC

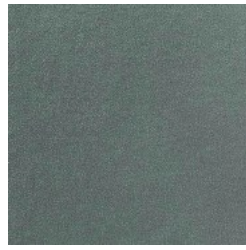
Wallcoverings » Architectural Film



RD5521



RD5522



RD5523



RD5524



RD5525



RD5526



RD5527



RD5528



RD5529



RD5530



RD5531



RD5533



RD5534



RD5535



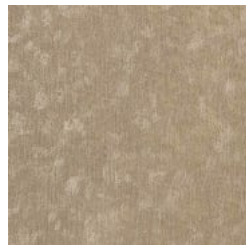
RD5536



RD5537



RD5538



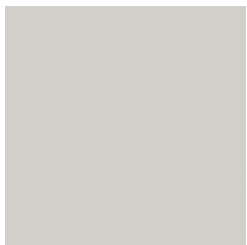
RD5539



RD5540



TR4371



TR4372



TR4374



TR4378



TR4379



TR4384

METALLIC

Wallcoverings » Architectural Film



TR4385



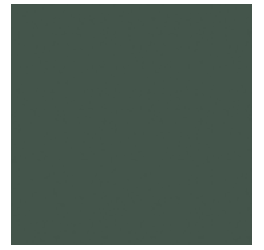
TR4388



TR4390



TR4392



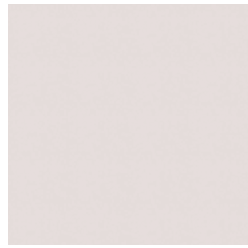
TR4393



TR4395



TR4398



TR4415



TR4416



TR4417



TR4418



TR4419



TR4420



TR5151



TR5152



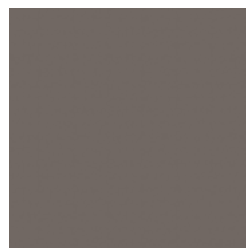
TR5154



TR5155



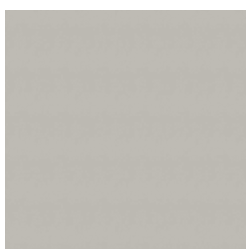
TR5161



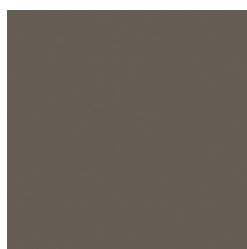
TR5162



TR5163



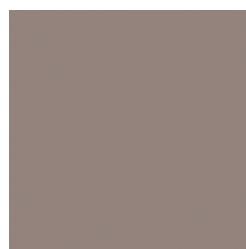
TR5541



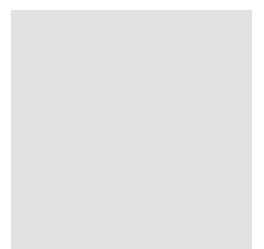
TR5542



TX4403



TX4404



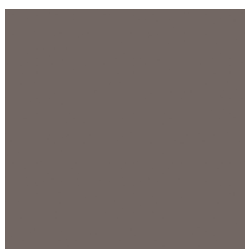
TX4407

METALLIC

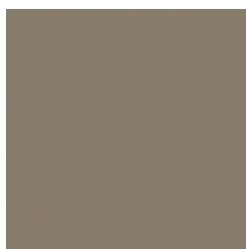
Wallcoverings » Architectural Film



TX4408



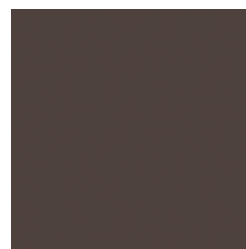
TX4412



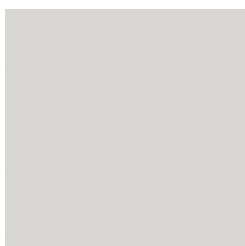
TX4461



TX4464



TX4465



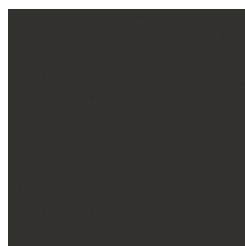
TX4467



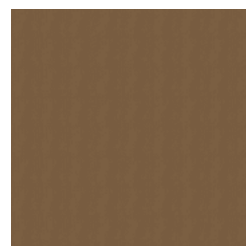
TX4469



TX5156



TX5158



TX5160

METALLIC

Wallcoverings » Architectural Film

The Reatec Metallic Collection is an Aluminium-metallized product developed with high luminance creating a beautiful look and textured design appeal.

✓ Bleach Cleanable

Description

Reatec is a durable and realistic architectural film with a pressure sensitive adhesive and air removal system backing.

Utilising state of the art, multi layer printing and minute embossing, its appearance is almost indistinguishable from real wood or stone. Reatec is stain and solvent/chemical resistant, anti-bacterial, anti-mould, colorfast, washable, scrubbable, and abrasion resistant.

A pdf with full Reatec Test Results can be found on the product Downloads tab on the website. Reatec can be stretched to cover the corners and curves and is suitable for both indoor and outdoor uses including kitchens and bathrooms.

Go to the DOWNLOADS tab for our Reatec Additional Spec Sheet and Installation Guide.

Roll Size

122cm wide x 50m - Available by the lineal metre

Composition

Reatec is a durable and realistic architectural film with a pressure sensitive adhesive and air removal system backing 350 g/m²

Pattern Repeat Size

N/A

Fire Rating

Tested in accordance with AS ISO 9705 2003 for the purpose of determining the Group Number classification required by the Building Code of Australia for the control of fire spread on interior wall and ceiling linings.

Classification - Group 1
Specific Extinction - Less than 250m²/kg

Warranty

2-year warranty. Visit baresque.com.au/warranty for complete details.

Lead Time

- 2-weeks (approx.) from Wednesday, subject to stock availability.
- Additional 1-week for Western Australia.
- Express delivery is available subject to a surcharge. Contact Baresque for details and pricing.

METALLIC

Wallcoverings » Architectural Film

Suggested Installation

Reatec is a specialised product and should only be installed by a trained installer.

It is strongly recommended that the installation instructions from our product downloads are read and understood.

As Reatec is a thin film, the substrate should be prepared as smooth as possible to avoid visible unevenness.

Reatec can be installed and repaired on-site, resulting in almost no downtime for both interior and exterior applications.

Feel free to contact Baresque with any installation questions.

Care Instructions

Wipe material with a clean, soft cloth dampened with a mild solution of liquid detergent and warm water. Repeat using only clean water, then dry with a lint free cloth.

Avoid using wax polishes, solvents or concentrated abrasives.

For more difficult stains, dampen a soft white cloth with a solution of household bleach (10% bleach / 90% water). Rub gently. Rinse with a water dampened cloth to remove bleach concentration.

Always test in an inconspicuous area first. If care instructions don't deliver the expected results, cease cleaning method immediately and contact Baresque for assistance.

METALLIC

Wallcoverings » Architectural Film

Colour & Finish Options