

BEVEL

Wallcoverings » Advanced Wall Protection



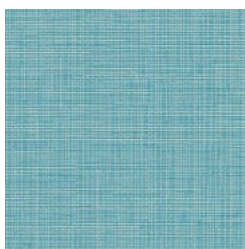
Brand: **P3tec**

BEVEL

Wallcoverings » Advanced Wall Protection



P3T-60230 CHILLIN'
OUT



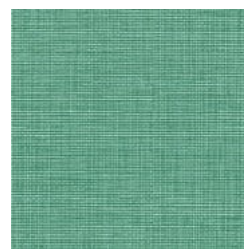
P3T-60231 BLUE
FLOURITE



P3T-60232 TOPAZ
TEAL



P3T-60233
AQUAMARINE



P3T-60234 EMERALD



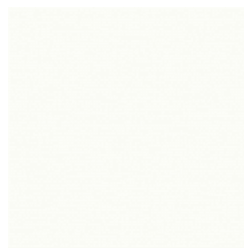
P3T-60235 PERIDOT



P3T-60236 YELLOW
JASPER



P3T-60237 CITRINE



P3T-60238 CLEAR
WHITE



P3T-60239 EDGY
WHITE



P3T-60240 BEVELED
GLASS



P3T-60241 MIDNIGHT
OIL



P3T-60242 METALLO



P3T-60243 CLAY
MASK



P3T-60244 BIRCH



P3T-60245 MARSH
ROOT



P3T-60246 FINIAL
BRONZE

BEVEL

Wallcoverings » Advanced Wall Protection

Bevel is a 137cm wide wall protection with a woven look that's resistant to impact, chemicals and abrasion. Available in 17 colourways.

- ✓ Bleach Cleanable
- ✓ Easy Clean
- ✓ Extended Warranty
- ✓ Extreme Durability
- ✓ High Stain Resistance
- ✓ Ultra Performance

Description	<p>Check out the videos to see for yourself how Advanced Wall Protection performs - Impact, Abrasion, Cleanability - or check out the brochure in the DOWNLOADS</p> <p>The technical innovation of P3TEC is a beautiful wall protection collection with three key advantages - High Performance, Easy to Use, Beautiful Design. Bring the look of silk, linen and wovens to high traffic, high abuse areas in healthcare, food service, transportation and more.</p>
Roll Size	137cm. Trims to 122cm x 13.7m Available by the FULL ROLL ONLY
Composition	Extra thick vinyl face on a heavy polyester / cotton knit fabric backing Equivalent to 40oz (900g/m ²)
Pattern Repeat Size	N/A
Environmental Info	<p>Formaldehyde free</p> <p>Heavy metals free</p> <p>Perfluorooctanoic acid free</p> <p>No solvent inks</p> <p>Low VOC emissions. Any VOCs dissipate quickly (faster than paint) through normal ventilation and have no recognized adverse impact on indoor air quality.</p> <p>Durability means products do not need to be replaced regularly due to wear and tear and being cleanable, vinyl products are ideal for helping keep commercial environments clean of bacteria.</p> <p>Baresque will only deal with vinyl manufacturers that comply with applicable state and federal regulations, provide a factory that is safe and clean for its employees to work in, recycle scrap and inks during the manufacturing process to minimize waste related to production.</p>
Fire Rating	<p>Tested in accordance with AS ISO 9705 2003 for the purpose of determining the Group Number classification as required by the Building Code of Australia for the control of fire spread on interior wall and ceiling linings.</p> <p>The result achieved was: Classification - Group 2 Specific Extinction - Less than 250m²/kg</p>

BEVEL

Wallcoverings » Advanced Wall Protection

Warranty 5-year warranty. Visit baresque.com.au/warranty for complete details.

Lead Time

- 2-weeks (approx.) from Wednesday, subject to stock availability.
- Additional 1-week for Western Australia.
- Express delivery is available subject to a surcharge. Contact Baresque for details and pricing.

Suggested Installation

Reverse hang alternate drops/overlap and double cut.

Advanced Wall Protection requires a specific installation method and we strongly recommend you use one of our recommended installers.

Download the Installation Instructions for details.

Baresque recommends and supply Roman brand adhesives and primers.

Care Instructions

1. Completion:

Immediately upon completion of installation, installer shall make sure that these products are cleaned and free of any layout marks, excess adhesive or surface blemishes. Remove excess adhesive with methods and materials recommended by the adhesive manufacturer.

2. Clean-Up and Routine Maintenance:

Rigid Profiles: For general cleaning, use disinfectant cleaner.

All Purpose Cleaner Heavy Duty: Use a clean, lint-free cloth and wipe clean. Do not use any abrasive cleaning cloths or sponges.

1. Spray products onto profile and wipe with a dampened cloth.

2. Repeat process if stain remains. If cleaning product residue remains, rinse with water.

BEVEL

Wallcoverings » Advanced Wall Protection

Colour & Finish Options