

# A CAPPELLA

Wallcoverings » Commercial Wallcoverings

---



Brand: **Symphony**

# A CAPPELLA

Wallcoverings » Commercial Wallcoverings



AZ52935 CREAM  
CADANCE



AZ52936 SOPRANO  
SKY



AZ52937 MOLTO MINT



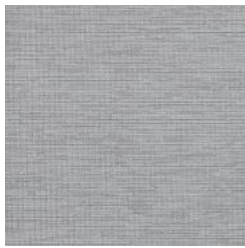
AZ52938 TEAL TUNE



AZ52939 WHITE  
LULLABY



AZ52940 GREY  
SERENADE



AZ52941 STEEL DRUM



AZ52942 RHAPSODY  
BLUE



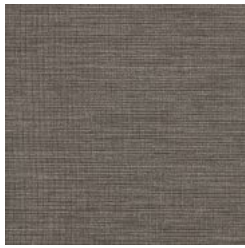
AZ52943 BEACH  
BALLAD



AZ52944 PEBBLE  
TREBLE



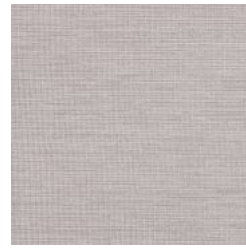
AZ52945 LYRICAL  
SLATE



AZ52946 FLINT  
FINALE



AZ52947 SWAN SONG



AZ52948 BALLET  
SHOES



AZ52949 TENOR  
TAUPE



AZ52950 WOODWIND



AZ52951 ALMOND  
ARIA



AZ52952 TAN TEMPO



AZ52953 EARTH  
TONES



AZ52954 BARITONE  
BROWN



AZ52955 IVORY  
MELODY



AZ52956 KHAKI  
CHORD



AZ52957 HONEY  
HARMONY



AZ52958 RHYTHMIC  
RED

# A CAPPELLA

Wallcoverings » Commercial Wallcoverings

A Cappella is a 137cm wide wallcovering with fibrous look in a matt surface that's available in 24 natural hues.

✓ **Bleach Cleanable**

✓ **Anti-Microbial**

---

Description	A matt surface with a fibrous look in a wide range of natural hues
Roll Size	137cm wide x 27.4m - Available by the lineal metre
Composition	Vinyl face on a woven backing 20oz (452 g/m <sup>2</sup> )
Pattern Repeat Size	N/A
Environmental Info	<p>Formaldehyde free</p> <p>Heavy metals free</p> <p>Perfluorooctanoic acid free</p> <p>No solvent inks</p> <p>Low VOC emissions. Any VOCs dissipate quickly (faster than paint) through normal ventilation and have no recognized adverse impact on indoor air quality.</p> <p>Durability means products do not need to be replaced regularly due to wear and tear and being cleanable, vinyl products are ideal for helping keep commercial environments clean of bacteria.</p> <p>Baresque will only deal with vinyl manufacturers that comply with applicable state and federal regulations, provide a factory that is safe and clean for its employees to work in, recycle scrap and inks during the manufacturing process to minimize waste related to production.</p>
Fire Rating	<p>Tested in accordance with AS ISO 9705 2003 for the purpose of determining the Group Number classification as required by the Building Code of Australia for the control of fire spread on interior wall and ceiling linings.</p> <p>The result achieved was: Classification - Group 2 Specific Extinction - Less than 250m<sup>2</sup>/kg</p>
Warranty	5-year warranty. Visit <a href="https://www.baresque.com.au/warranty">baresque.com.au/warranty</a> for complete details.

---

# A CAPPELLA

Wallcoverings » Commercial Wallcoverings

---

<b>Lead Time</b>	<ul style="list-style-type: none"><li>• 2-weeks (approx.) from Wednesday, subject to stock availability.</li><li>• Additional 1-week for Western Australia.</li><li>• Express delivery is available subject to a surcharge. Contact Baresque for details and pricing.</li></ul>
------------------	---------------------------------------------------------------------------------------------------------------------------------------------------------------------------------------------------------------------------------------------------------------------------------

---

<b>Suggested Installation</b>	<p>Reverse hang / overlap and double cut.</p> <p>Baresque recommends and supply Roman brand adhesives and primers.</p>
-------------------------------	------------------------------------------------------------------------------------------------------------------------

---

<b>Care Instructions</b>	<p>Use cloth with any of the following in preferred order of use:</p> <ol style="list-style-type: none"><li>1: Clear warm water</li><li>2: Mild solution of liquid detergent and warm water</li><li>3: Isopropyl Alcohol (a.k.a. rubbing alcohol)</li></ol> <p>Remove any detergent with a clean, damp cloth. Gently pat dry.</p> <p>For more difficult stains, dampen a soft white cloth with a solution of household bleach (10% bleach / 90% water). Rub gently.</p> <p>Rinse with a water dampened cloth to remove bleach concentration.</p> <p>Do not use solvent based or concentrated abrasive cleaning agents, lacquer thinners or nail polish remover as these may cause discolouration over a period of time.</p> <p>Always test in an inconspicuous area first.</p> <p>If care instructions don't deliver the expected results, cease cleaning method immediately and contact Baresque for assistance.</p>
--------------------------	-----------------------------------------------------------------------------------------------------------------------------------------------------------------------------------------------------------------------------------------------------------------------------------------------------------------------------------------------------------------------------------------------------------------------------------------------------------------------------------------------------------------------------------------------------------------------------------------------------------------------------------------------------------------------------------------------------------------------------------------------------------------------------------------------------------------------------------------------------------------------------------------------------------------------

---

# A CAPPELLA

Wallcoverings » Commercial Wallcoverings

---

## Colour & Finish Options