

# BEACON HILL

Wallcoverings » Commercial Wallcoverings



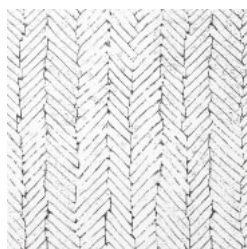
Brand: **Versa**

# BEACON HILL

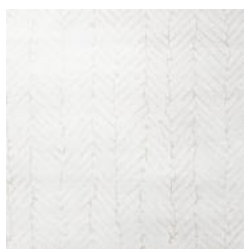
Wallcoverings » Commercial Wallcoverings

## COLOURWAY CARD

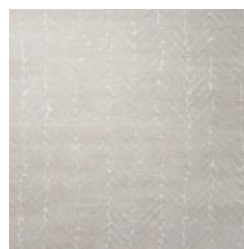
COLOURWAY CARD



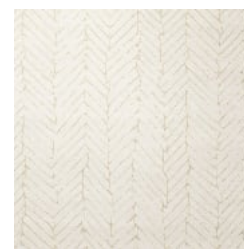
A179-001 MINIMALIST



A179-008 PALE OAK



A179-012 CITY  
STREET



A179-104 COCONUT  
MILK



A179-117 SHIPLAP



A179-159 ALLEY CAT



A179-177 STREET ART



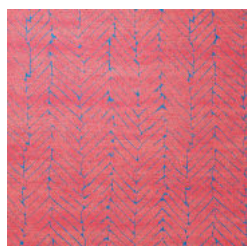
A179-270 VINTAGE  
NOUVEAU



A179-331  
BLACKBERRY



A179-348 INK



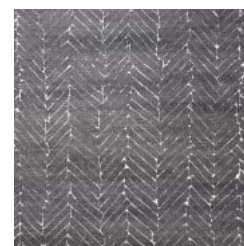
A179-456 DAY GLO



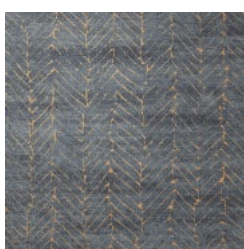
A179-508 CHELSEA  
GREY



A179-511 LOFT SPACE



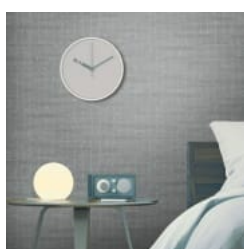
A179-514 EARTH



A179-524  
INTERGALACTIC



A179-776 VINTAGE  
BRASS



beacon-hill-  
promo-2.jpg

# BEACON HILL

Wallcoverings » Commercial Wallcoverings

Beacon Hill is a 137cm wide commercial wallcovering with a chevron pattern that's available in 16 colours. Durable, easy to clean and cost effective.

✓ **Bleach Cleanable**

Roll Size 137cm wide x 27.4m - Available by the lineal metre

Composition Vinyl face on a fabric backing 20oz (452 g/m<sup>2</sup>)

Pattern Repeat Size N/A

Environmental Info

Formaldehyde free

Heavy metals free

Perfluorooctanoic acid free

No solvent inks

Low VOC emissions. Any VOCs dissipate quickly (faster than paint) through normal ventilation and have no recognized adverse impact on indoor air quality.

Durability means products do not need to be replaced regularly due to wear and tear and being cleanable, vinyl products are ideal for helping keep commercial environments clean of bacteria.

Baresque will only deal with vinyl manufacturers that comply with applicable state and federal regulations, provide a factory that is safe and clean for its employees to work in, recycle scrap and inks during the manufacturing process to minimize waste related to production.

Fire Rating

Tested in accordance with AS ISO 9705 2003 for the purpose of determining the Group Number classification as required by the Building Code of Australia for the control of fire spread on interior wall and ceiling linings.

The result achieved was:  
Classification - Group 2  
Specific Extinction - Less than 250m<sup>2</sup>/kg

Warranty 5-year warranty. Visit [baresque.com.au/warranty](https://www.baresque.com.au/warranty) for complete details.

Lead Time

- 2-weeks (approx.) from Wednesday, subject to stock availability.
- Additional 1-week for Western Australia.
- Express delivery is available subject to a surcharge. Contact Baresque for details and pricing.

# BEACON HILL

Wallcoverings » Commercial Wallcoverings

---

## Suggested Installation

Reverse hang / overlap and double cut.

Baresque recommends and supply Roman brand adhesives and primers.

---

## Care Instructions

Always use a clean, white, soft cloth.

Use cloth with any of the following in preferred order of us:

1: Clear warm water

2: Mild solution of liquid detergent and warm water

3: Isopropyl Alcohol (a.k.a. rubbing alcohol)

Remove any detergent with a clean, damp cloth. Gently pat dry.

For more difficult stains, dampen a soft white cloth with a solution of household bleach (10% bleach / 90% water). Rub gently.

Rinse with a water dampened cloth to remove bleach concentration.

DO NOT USE solvent based or concentrated abrasive cleaning agents, lacquer thinners, nail polish remover as these may cause discolouration over a period of time.

Always test in an inconspicuous area first. If care instructions don't deliver the expected results, cease cleaning method immediately and contact Baresque for assistance.

---

# BEACON HILL

Wallcoverings » Commercial Wallcoverings

---

## Colour & Finish Options