

BLACKSMITH

Wallcoverings » Commercial Wallcoverings



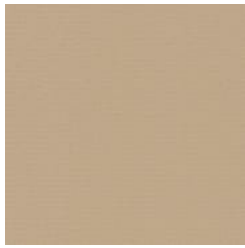
Brand: **York**

BLACKSMITH

Wallcoverings » Commercial Wallcoverings



MRE1472 STEEL



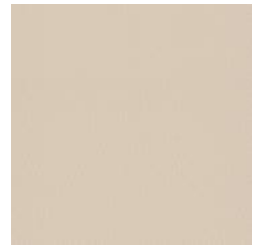
MRE1473 GLIMMER



MRE1474 ALUMINIUM



MRE1475 OPTIC
WHITE



MRE1476 GILDED



MRE1477 PEWTER



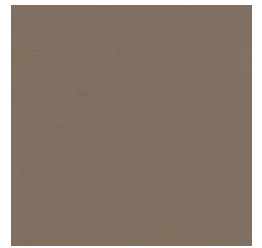
MRE1478 INK PRESS



MRE1479 PEARL TRAX



MRE1480 CRYSTAL
SHORE



MRE1481 ESQUIRE



MRE1482 SHADOW

BLACKSMITH

Wallcoverings » Commercial Wallcoverings

Blacksmith is a 137cm wide wallcovering created with 3D-engraved embossing rollers giving it a proprietary texture along the 11 colours available.

Description	Blacksmith has been created with new, state-of-the-art, 3D-engraved embossing rollers. Featuring an innovative, proprietary texture and a clean, fresh colour palette, this design is inspired by fabric texture, geometry and architecture delivering an overall contemporary feel.
Roll Size	137cm wide x 27.4m - Available by the lineal metre
Composition	Vinyl face on a fabric backing Equivalent to 20oz (452g/m ²)
Pattern Repeat Size	N/A
Environmental Info	<p>Formaldehyde free</p> <p>Heavy metals free</p> <p>Perfluorooctanoic acid free</p> <p>No solvent inks</p> <p>Low VOC emissions. Any VOCs dissipate quickly (faster than paint) through normal ventilation and have no recognized adverse impact on indoor air quality.</p> <p>Durability means products do not need to be replaced regularly due to wear and tear and being cleanable, vinyl products are ideal for helping keep commercial environments clean of bacteria.</p> <p>Baresque will only deal with vinyl manufacturers that comply with applicable state and federal regulations, provide a factory that is safe and clean for its employees to work in, recycle scrap and inks during the manufacturing process to minimize waste related to production.</p>
Fire Rating	<p>Tested in accordance with AS ISO 9705 2003 for the purpose of determining the Group Number classification as required by the Building Code of Australia for the control of fire spread on interior wall and ceiling linings.</p> <p>The result achieved was: Classification - Group 2 Specific Extinction - Less than 250m²/kg</p>
Warranty	5-year warranty. Visit baresque.com.au/warranty for complete details.

BLACKSMITH

Wallcoverings » Commercial Wallcoverings

Lead Time

- 2-weeks (approx.) from Wednesday, subject to stock availability.
 - Additional 1-week for Western Australia.
 - Express delivery is available subject to a surcharge. Contact Baresque for details and pricing.
-

Care Instructions

Use cloth with any of the following in preferred order of use:

1: Clear warm water

2: Mild solution of liquid detergent and warm water

3: Isopropyl Alcohol (a.k.a. rubbing alcohol)

Remove any detergent with a clean, damp cloth. Gently pat dry.

For more difficult stains, dampen a soft white cloth with a solution of household bleach (10% bleach / 90% water). Rub gently.

Rinse with a water dampened cloth to remove bleach concentration.

Do not use solvent based or concentrated abrasive cleaning agents, lacquer thinners or nail polish remover as these may cause discolouration over a period of time.

Always test in an inconspicuous area first.

If care instructions don't deliver the expected results, cease cleaning method immediately and contact Baresque for assistance.

BLACKSMITH

Wallcoverings » Commercial Wallcoverings

Colour & Finish Options