

CHATEAU C921

Wallcoverings » Commercial Wallcoverings



Brand: **Koroseal**

Applications: **Walls**

1300 306 399

info@baresque.com.au

baresque.com.au

1 of 5

CHATEAU C921

Wallcoverings » Commercial Wallcoverings



chateau_promo-2.jpg

CHATEAU C921

Wallcoverings » Commercial Wallcoverings

Chateau is a 137cm wide commercial wallcovering with a wood like design that's perfect for a warm, natural finish. Available in 13 colours.

✓ **Bleach Cleanable**

Description Chateau is a biophilic design that brings the beautiful imperfections of wood to life incorporating the natural material, natural light, vegetation, nature views and other experiences of the natural world into the modern built environment. Slats of wood sit side by side, each piece unique, just as nature intended. Perfect for any interior that needs a warm, natural finish.

Composition Vinyl face on a fabric backing Equivalent to 20oz (452g/m²)

Environmental Info

- Formaldehyde free
- Heavy metals free
- Perfluorooctanoic acid free
- No solvent inks

Low VOC emissions. Any VOCs dissipate quickly (faster than paint) through normal ventilation and have no recognized adverse impact on indoor air quality.

Durability means products do not need to be replaced regularly due to wear and tear and being cleanable, vinyl products are ideal for helping keep commercial environments clean of bacteria.

Baresque will only deal with vinyl manufacturers that comply with applicable state and federal regulations, provide a factory that is safe and clean for its employees to work in, recycle scrap and inks during the manufacturing process to minimize waste related to production.

Pattern Repeat Size N/A

Roll Size 137cm wide x 27.4m - Available by the lineal metre

Fire Rating Tested in accordance with AS ISO 9705 2003 for the purpose of determining the Group Number classification as required by the Building Code of Australia for the control of fire spread on interior wall and ceiling linings.

The result achieved was:
Classification - Group 2
Specific Extinction - Less than 250m²/kg

CHATEAU C921

Wallcoverings » Commercial Wallcoverings

Lead Time

- 2-weeks (approx.) from Wednesday, subject to stock availability.
- Additional 1-week for Western Australia.
- Express delivery is available subject to a surcharge. Contact Baresque for details and pricing.

Suggested Installation

Reverse hang / overlap and double cut.

Baresque recommends and supply Roman brand adhesives and primers.

Care Instructions

Use cloth with any of the following in preferred order of use:

- 1: Clear warm water
- 2: Mild solution of liquid detergent and warm water
- 3: Isopropyl Alcohol (a.k.a. rubbing alcohol)

Remove any detergent with a clean, damp cloth. Gently pat dry.

For more difficult stains, dampen a soft white cloth with a solution of household bleach (10% bleach / 90% water). Rub gently.

Rinse with a water dampened cloth to remove bleach concentration.

Do not use solvent based or concentrated abrasive cleaning agents, lacquer thinners or nail polish remover as these may cause discolouration over a period of time.

Always test in an inconspicuous area first.

If care instructions don't deliver the expected results, cease cleaning method immediately and contact Baresque for assistance.

Warranty

5-year warranty. Visit [baresque.com.au/warranty](https://www.baresque.com.au/warranty) for complete details.

CHATEAU C921

Wallcoverings » Commercial Wallcoverings

Colour & Finish Options

COLOURWAY CARD



C921-01
WHITEWASHED



C921-02 BLEACHED



C921-03 WEATHERED



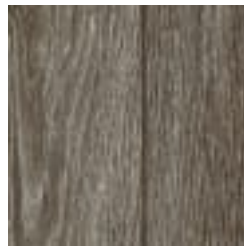
C921-04 BEACH



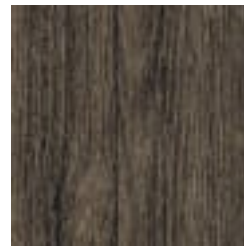
C921-05 TUSCAN



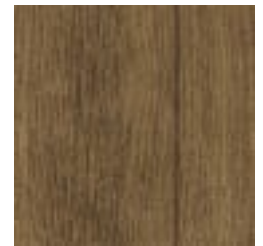
C921-06 CLOVE



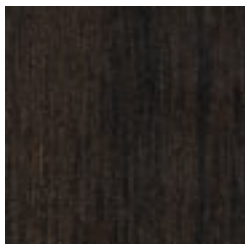
C921-07 PINING



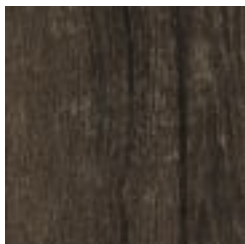
C921-08 DRIFT



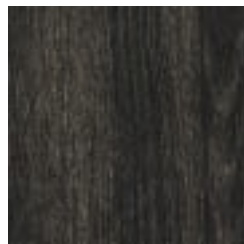
C921-09 ANCIENT
OAK



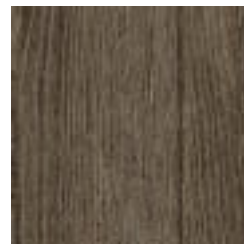
C921-10 AGED
WALNUT



C921-11 ESPRESSO



C921-12 SMOKED



C921-13 PROVENCAL