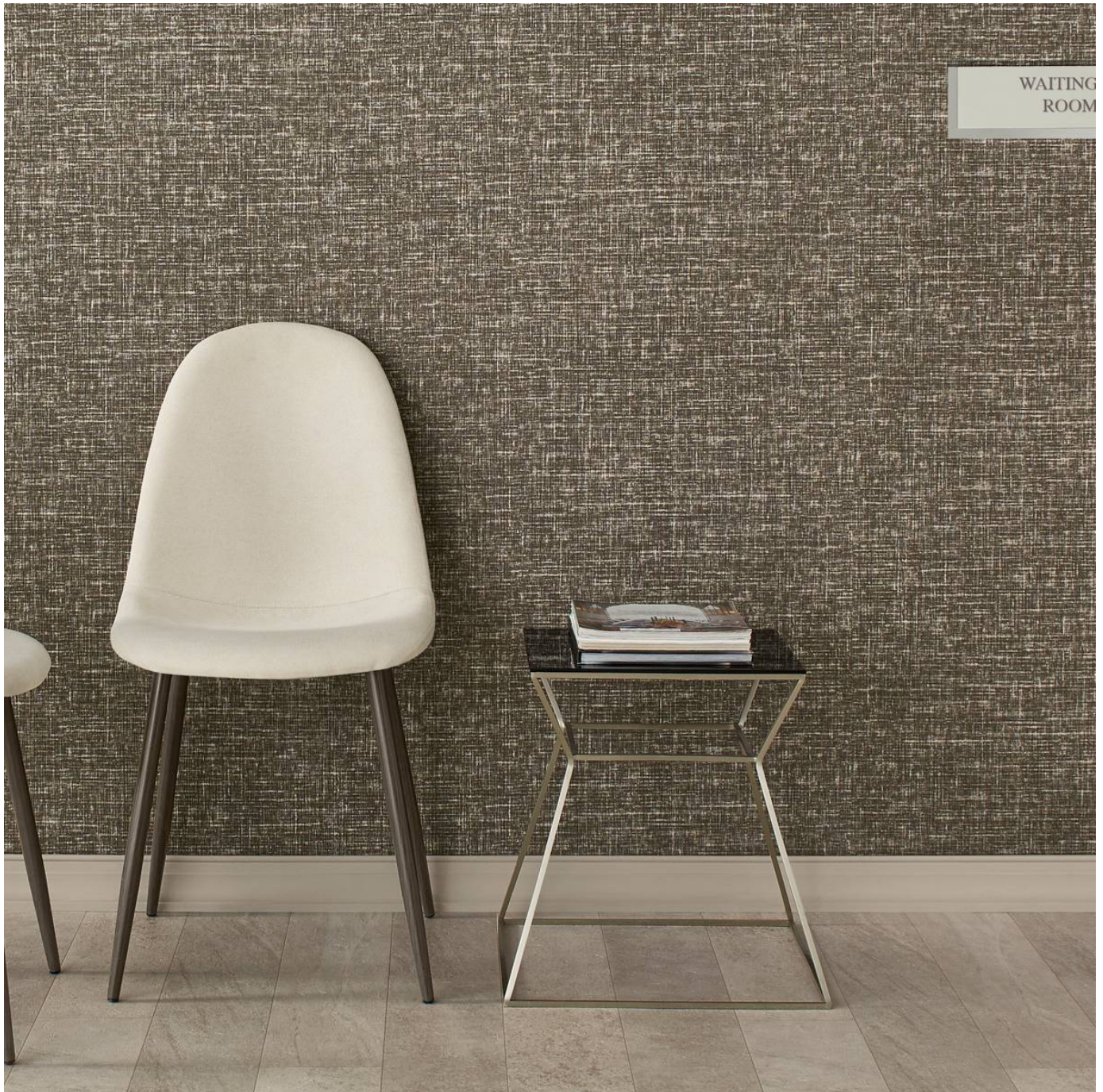


# DEMI-TONE LINEN

Wallcoverings » Commercial Wallcoverings



Brand: **Symphony**



# DEMI-TONE LINEN

Wallcoverings » Commercial Wallcoverings

## COLOURWAY CARD

COLOURWAY CARD



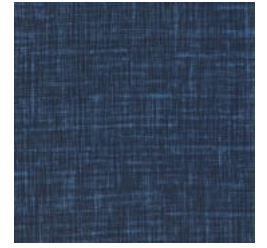
AZ53470 RESTING WHITE



AZ53471 SLATE SUMPRE



AZ53472 PITCH



AZ53473 RHYTHM AND ?



AZ53474 METERED WHITE



AZ53475 SILVER STAFF



AZ53476 QUIET GREY



AZ53477 CHARCOAL TONE



AZ53478 COMPLEX WHITE



AZ53479 SOLO STERLING



AZ53480 GRIS SCORE



AZ53481 PIANO KEYS



AZ53482 UPBEAT BUFF



AZ53483 HARMONIC BEIGE



AZ53484 MUSHROOM



AZ53485 TONIC TAUPE



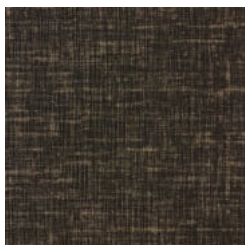
AZ53486 DOUBLE TAN



AZ53487 KEY KHAKI



AZ53488 TAWNY TIME



AZ53489 BLACK THEORY



AZ53490 ENCORE ECRU



AZ53491 BRASS CLEF



AZ53492 HORN SECTION



AZ53493 NAVY OF NOTE

# DEMI-TONE LINEN

Wallcoverings » Commercial Wallcoverings



AZ53494 MELODY



AZ53495 DOLCE



AZ53496 CRESCENDO



AZ53497 NOCTURNE  
NAVY



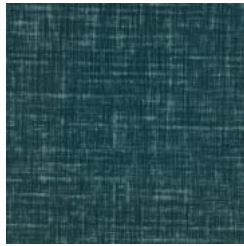
AZ53498 ROSIN



AZ53499 SOFTLY  
SAGE



AZ53500 GRAZIOSO



AZ53501 BLUE BEAT

# DEMI-TONE LINEN

Wallcoverings » Commercial Wallcoverings

Demi-Tone Linen is a 137cm wide wallcovering with a linen look featuring 29 colours. Vinyl material is versatile, durable and easy to clean.

## ✓ Bleach Cleanable

Description	Worn effects and high contrast create a fresh texture in Demi-Tone Linen. Easy to see at a distance, this twist on linen features 32 colours which coordinate with Demi-Tone Demask and Sisal Song.
Roll Size	137cm wide x 27.4m - Available by the lineal metre
Composition	Vinyl face on a fabric backing Equivalent to 20oz (452g/m <sup>2</sup> )
Pattern Repeat Size	N/A
Environmental Info	<p>Formaldehyde free</p> <p>Heavy metals free</p> <p>Perfluorooctanoic acid free</p> <p>No solvent inks</p> <p>Low VOC emissions. Any VOCs dissipate quickly (faster than paint) through normal ventilation and have no recognized adverse impact on indoor air quality.</p> <p>Durability means products do not need to be replaced regularly due to wear and tear and being cleanable, vinyl products are ideal for helping keep commercial environments clean of bacteria.</p> <p>Baresque will only deal with vinyl manufacturers that comply with applicable state and federal regulations, provide a factory that is safe and clean for its employees to work in, recycle scrap and inks during the manufacturing process to minimize waste related to production.</p>
Fire Rating	<p>Tested in accordance with AS ISO 9705 2003 for the purpose of determining the Group Number classification as required by the Building Code of Australia for the control of fire spread on interior wall and ceiling linings.</p> <p>The result achieved was: Classification - Group 2 Specific Extinction - Less than 250m<sup>2</sup>/kg</p>
Warranty	5-year warranty. Visit <a href="https://www.baresque.com.au/warranty">baresque.com.au/warranty</a> for complete details.

# DEMI-TONE LINEN

Wallcoverings » Commercial Wallcoverings

---

## Lead Time

- 2-weeks (approx.) from Wednesday, subject to stock availability.
  - Additional 1-week for Western Australia.
  - Express delivery is available subject to a surcharge. Contact Baresque for details and pricing.
- 

## Suggested Installation

Reverse hang / overlap and double cut.  
Baresque recommends and supply Roman brand adhesives and primers.

---

## Care Instructions

Use cloth with any of the following in preferred order of use:

- 1: Clear warm water
- 2: Mild solution of liquid detergent and warm water
- 3: Isopropyl Alcohol (a.k.a. rubbing alcohol)

Remove any detergent with a clean, damp cloth. Gently pat dry.

For more difficult stains, dampen a soft white cloth with a solution of household bleach (10% bleach / 90% water). Rub gently.

Rinse with a water dampened cloth to remove bleach concentration.

Do not use solvent based or concentrated abrasive cleaning agents, lacquer thinners or nail polish remover as these may cause discolouration over a period of time.

Always test in an inconspicuous area first.

If care instructions don't deliver the expected results, cease cleaning method immediately and contact Baresque for assistance.

---

# DEMI-TONE LINEN

Wallcoverings » Commercial Wallcoverings

---

## Colour & Finish Options