

DRIFTWOOD

Wallcoverings » Commercial Wallcoverings



Brand: **Bolta**

Applications: **Walls**

DRIFTWOOD

Wallcoverings » Commercial Wallcoverings

Driftwood is a 137cm wide commercial wallcovering with a wood design is available in 12 colourways. Vinyl is versatile, durable and cost effective.

✓ **Bleach Cleanable**

Description Carried in by the tide, Driftwood appears weathered from the elements. This unmistakable wood design features a full-width grain, accented with a white washed influence. Drifting on shore are 13 refined neutrals such as Teak, Cypress and Tamarind. Some colours of Driftwood are also available in matching P3TEC - a new generation of Advanced Wall Protection. Check out the Additional Comments below or the DOWNLOADS tab for more details.

Composition Vinyl face on a fabric backing Equivalent to 20oz (452 g/m²)

Environmental Info

- Formaldehyde free
- Heavy metals free
- Perfluorooctanoic acid free
- No solvent inks

Low VOC emissions. Any VOCs dissipate quickly (faster than paint) through normal ventilation and have no recognized adverse impact on indoor air quality.

Durability means products do not need to be replaced regularly due to wear and tear and being cleanable, vinyl products are ideal for helping keep commercial environments clean of bacteria.

Baresque will only deal with vinyl manufacturers that comply with applicable state and federal regulations, provide a factory that is safe and clean for its employees to work in, recycle scrap and inks during the manufacturing process to minimize waste related to production.

Pattern Repeat Size 45.7cm H x 137cm W

Roll Size 137cm wide x 27.4m - Available by the lineal metre

Fire Rating Tested in accordance with AS ISO 9705 2003 for the purpose of determining the Group Number classification as required by the Building Code of Australia for the control of fire spread on interior wall and ceiling linings.

The result achieved was:
Classification - Group 2
Specific Extinction - Less than 250m²/kg

DRIFTWOOD

Wallcoverings » Commercial Wallcoverings

Lead Time

- 2-weeks (approx.) from Wednesday, subject to stock availability.
- Additional 1-week for Western Australia.
- Express delivery is available subject to a surcharge. Contact Baresque for details and pricing.

Suggested Installation

Reverse hang / overlap and double cut.

Baresque recommends and supply Roman brand adhesives and primers.

Care Instructions

Use cloth with any of the following in preferred order of use:

- 1: Clear warm water
- 2: Mild solution of liquid detergent and warm water
- 3: Isopropyl Alcohol (a.k.a. rubbing alcohol)

Remove any detergent with a clean, damp cloth. Gently pat dry.

For more difficult stains, dampen a soft white cloth with a solution of household bleach (10% bleach / 90% water). Rub gently.

Rinse with a water dampened cloth to remove bleach concentration.

Do not use solvent based or concentrated abrasive cleaning agents, lacquer thinners or nail polish remover as these may cause discolouration over a period of time.

Always test in an inconspicuous area first.

If care instructions don't deliver the expected results, cease cleaning method immediately and contact Baresque for assistance.

Warranty

5-year warranty. Visit [baresque.com.au/warranty](https://www.baresque.com.au/warranty) for complete details.

Additional Comments

Driftwood is also available in matching P3TEC design In-Grained - a new generation of Advanced Wall Protection. Cross over colours are BB-DR-01, 02, 03, 04, 06, 09, 10, 11, 12, 13.

DRIFTWOOD

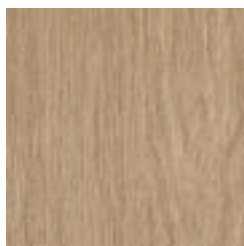
Wallcoverings » Commercial Wallcoverings

Colour & Finish Options

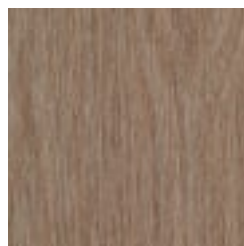
COLOURWAY CARD



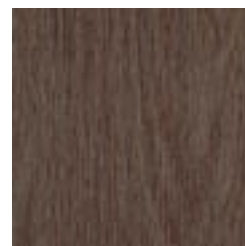
BB-DR-01 SOFT
MAPLE



BB-DR-02 CEDAR



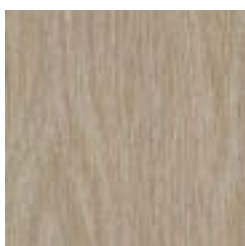
BB-DR-03 TEAK



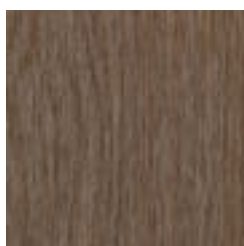
BB-DR-04 ROSEWOOD



BB-DR-05 LIGHT
ASPEN



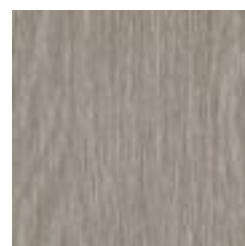
BB-DR-06 CYPRESS



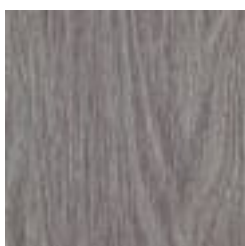
BB-DR-08 WALNUT



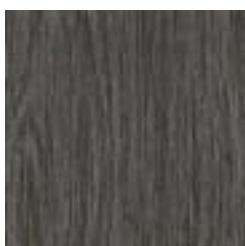
BB-DR-09
BIRCHWOOD



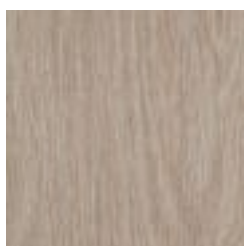
BB-DR-10 FRENCH
OAK



BB-DR-11 ASH GREY



BB-DR-12 EBONY



BB-DR-13 DOGWOOD