

EPIC LINES

Wallcoverings » Commercial Wallcoverings



Brand: **Genon**

EPIC LINES

Wallcoverings » Commercial Wallcoverings

COLOURWAY CARD

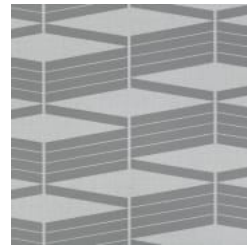
COLOURWAY CARD



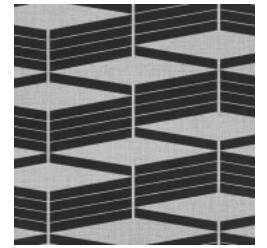
W2-EL-01 STARLIGHT



W2-EL-02 GOSSAMER



W2-EL-03 ECLIPSE



W2-EL-04 BLACK TIE



W2-EL-05 COVE
GLOW



W2-EL-06 SPUN GOLD



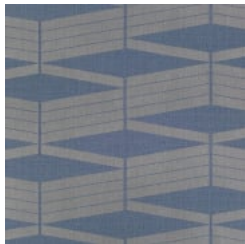
W2-EL-07 ROSE
QUARTZ



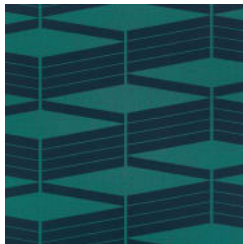
W2-EL-08 BERRY
BURST



W2-EL-09 CHAMBRAY



W2-EL-10 NAVY
STEEL



W2-EL-11 SONIC JADE



W2-EL-12 GOLDEN
AQUA



W2-EL-13 NEWPORT
NAVY

EPIC LINES

Wallcoverings » Commercial Wallcoverings

Epic Lines is a 137cm wide commercial wallcovering with a geometric pattern that's available in 13 colours. It's versatile, durable and cost effective

✓ **Bleach Cleanable**

Roll Size 137cm wide x 27.4m - Available by the lineal metre

Composition Vinyl face on a fabric backing 20oz (452 g/m²)

Pattern Repeat Size 30cm V

Environmental Info Formaldehyde free

Heavy metals free

Perfluorooctanoic acid free

No solvent inks

Low VOC emissions. Any VOCs dissipate quickly (faster than paint) through normal ventilation and have no recognized adverse impact on indoor air quality.

Durability means products do not need to be replaced regularly due to wear and tear and being cleanable, vinyl products are ideal for helping keep commercial environments clean of bacteria.

Baresque will only deal with vinyl manufacturers that comply with applicable state and federal regulations, provide a factory that is safe and clean for its employees to work in, recycle scrap and inks during the manufacturing process to minimize waste related to production.

Fire Rating Tested in accordance with AS ISO 9705 2003 for the purpose of determining the Group Number classification as required by the Building Code of Australia for the control of fire spread on interior wall and ceiling linings.

The result achieved was:

Classification - Group 2

Specific Extinction - Less than 250m²/kg

Warranty 5-year warranty. Visit [baresque.com.au/warranty](https://www.baresque.com.au/warranty) for complete details.

Lead Time

- 2-weeks (approx.) from Wednesday, subject to stock availability.
- Additional 1-week for Western Australia.
- Express delivery is available subject to a surcharge. Contact Baresque for details and pricing.

EPIC LINES

Wallcoverings » Commercial Wallcoverings

Suggested Installation

Reverse hang / overlap and double cut.

Baresque recommends and supply Roman brand adhesives and primers.

Care Instructions

Use cloth with any of the following in preferred order of use:

1: Clear warm water

2: Mild solution of liquid detergent and warm water

3: Isopropyl Alcohol (a.k.a. rubbing alcohol)

Remove any detergent with a clean, damp cloth. Gently pat dry.

For more difficult stains, dampen a soft white cloth with a solution of household bleach (10% bleach / 90% water). Rub gently.

Rinse with a water dampened cloth to remove bleach concentration.

Do not use solvent based or concentrated abrasive cleaning agents, lacquer thinners or nail polish remover as these may cause discolouration over a period of time.

Always test in an inconspicuous area first.

If care instructions don't deliver the expected results, cease cleaning method immediately and contact Baresque for assistance.

EPIC LINES

Wallcoverings » Commercial Wallcoverings

Colour & Finish Options