

HANAMI

Wallcoverings » Commercial Wallcoverings



Brand: **Versa**

1300 306 399

info@baresque.com.au

baresque.com.au

1 of 5

HANAMI

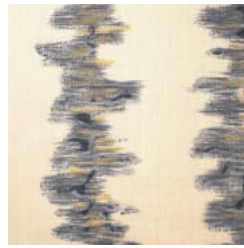
Wallcoverings » Commercial Wallcoverings

COLOURWAY CARD

COLOURWAY CARD



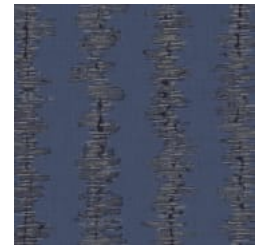
A174-040 VAPOR



A174-169 ALFRESCO



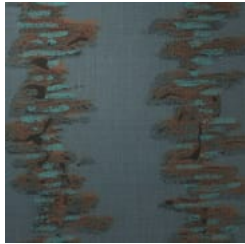
A174-181 SANDSTONE



A174-315 BALLPOINT



A174-317 FINCH



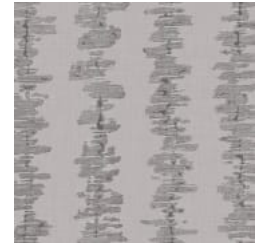
A174-343 SECRET
GARDEN



A174-772 RATTAN



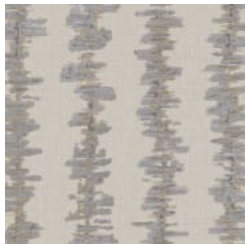
A174-808
SILHOUETTE



A174-817 GRAY
HERON



A174-829 VIZCAYA



A174-835
BOARDWALK



A174-856 ROCKPORT
GRAY

HANAMI

Wallcoverings » Commercial Wallcoverings

Hanami is a mid-scale shibori stripe with subtle metallics on a silken background in 5 colors, from creamy white to inky blue, coordinating with Hanami Silk.

✓ Bleach Cleanable

✓ EPD Certified

✓ Low VOC

✓ HPD Certified

Description

Hanami is a mid-scale shibori stripe on a silken background.

An enchanting companion to Hanami Silk, the painterly strokes of subtle metallics and accent colors create visual interest and intrigue.

The captivating colour palette features 5 colorways from creamy white to inky blue.

Coordinates with Hanami Silk and Sakura designs.

Roll Size

132/137cm x 27.4m - Available by the lineal metre.

Weight

452 g/m²

Composition

Vinyl face on a non-woven backing 20oz (452 g/m²)

Pattern Repeat Size

13.4 cm H

Environmental Info

Formaldehyde free

Heavy metals free

Perfluorooctanoic acid free

No solvent inks

Low VOC emissions. Any VOCs dissipate quickly (faster than paint) through normal ventilation and have no recognized adverse impact on indoor air quality.

Durability means products do not need to be replaced regularly due to wear and tear and being cleanable, vinyl products are ideal for helping keep commercial environments clean of bacteria.

Baresque will only deal with vinyl manufacturers that comply with applicable state and federal regulations, provide a factory that is safe and clean for its employees to work in, recycle scrap and inks during the manufacturing process to minimize waste related to production.

HANAMI

Wallcoverings » Commercial Wallcoverings

Fire Rating

Tested in accordance with AS ISO 9705 2003 for the purpose of determining the Group Number classification as required by the Building Code of Australia for the control of fire spread on interior wall and ceiling linings.

The result achieved was:
Classification - Group 2
Specific Extinction - Less than 250m²/kg

Warranty

5-year warranty. Visit baresque.com.au/warranty for complete details.

Lead Time

- 2-weeks (approx.) from Wednesday, subject to stock availability.
 - Additional 1-week for Western Australia.
 - Express delivery is available subject to a surcharge. Contact Baresque for details and pricing.
-

Suggested Installation

Reverse hang / overlap and double cut.
Baresque recommends and supply Roman brand adhesives and primers.

Care Instructions

Always use a clean, white, soft cloth.

Use cloth with any of the following in preferred order of us:

- 1: Clear warm water
- 2: Mild solution of liquid detergent and warm water
- 3: Isopropyl Alcohol (a.k.a. rubbing alcohol)

Remove any detergent with a clean, damp cloth. Gently pat dry.

For more difficult stains, dampen a soft white cloth with a solution of household bleach (10% bleach / 90% water). Rub gently.

Rinse with a water dampened cloth to remove bleach concentration.

DO NOT USE solvent based or concentrated abrasive cleaning agents, lacquer thinners, nail polish remover as these may cause discolouration over a period of time.

Always test in an inconspicuous area first. If care instructions don't deliver the expected results, cease cleaning method immediately and contact Baresque for assistance.

HANAMI

Wallcoverings » Commercial Wallcoverings

Colour & Finish Options