

# HANAMI SILK

Wallcoverings » Commercial Wallcoverings

---



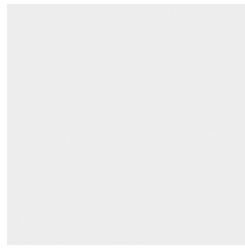
Brand: **Versa**

# HANAMI SILK

Wallcoverings » Commercial Wallcoverings

## COLOURWAY CARD

COLOURWAY CARD



A175-036 SALT AIR



A175-040 VAPOR



A175-169 ALFRESCO



A175-181 SANDSTONE



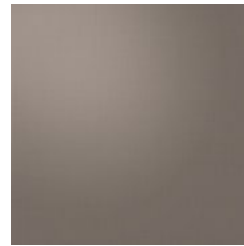
A175-310 LAKE  
TAHOE



A175-313 PEACOCK



A175-315 BALLPOINT



A175-317 FINCH



A175-343 SECRET  
GARDEN



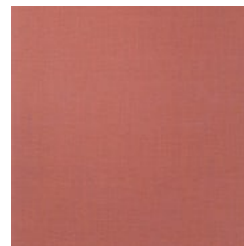
A175-362 GALA



A175-372 CRESCENT



A175-388 TURQUOISE



A175-445 CHINESE  
RED



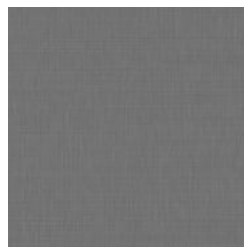
A175-506 SMOKE



A175-535  
PORTOBELLO



A175-558 HENNA



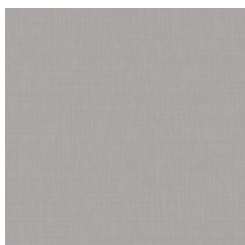
A175-579 CHARCOAL



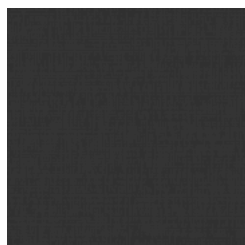
A175-772 RATTAN



A175-808  
SILHOUETTE



A175-817 GRAY  
HERON



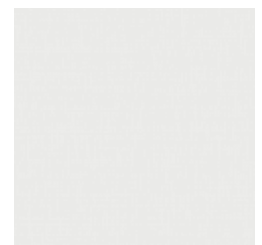
A175-820 PUFFIN



A175-829 VIZCAYA



A175-835  
BOARDWALK



A175-844 WHISPER

# HANAMI SILK

Wallcoverings » Commercial Wallcoverings

---



A175-856 ROCKPORT  
GRAY



A175-861 THIMBLE

# HANAMI SILK

Wallcoverings » Commercial Wallcoverings

Hanami Silk is a 137cm wide commercial wallcovering that's available in 12 colourways. It's versatile, durable and easy to clean.

✓ **Bleach Cleanable**

**Description** Simple yet sophisticated Hanami Silk is the direct companion of Hanami.

**Roll Size** 132/137cm x 27.4m - Available by the lineal metre.

**Composition** Vinyl face on a non-woven backing 20oz (452 g/m<sup>2</sup>)

**Pattern Repeat Size** N/A

**Environmental Info** Formaldehyde free

Heavy metals free

Perfluorooctanoic acid free

No solvent inks

Low VOC emissions. Any VOCs dissipate quickly (faster than paint) through normal ventilation and have no recognized adverse impact on indoor air quality.

Durability means products do not need to be replaced regularly due to wear and tear and being cleanable, vinyl products are ideal for helping keep commercial environments clean of bacteria.

Baresque will only deal with vinyl manufacturers that comply with applicable state and federal regulations, provide a factory that is safe and clean for its employees to work in, recycle scrap and inks during the manufacturing process to minimize waste related to production.

**Fire Rating** Tested in accordance with AS ISO 9705 2003 for the purpose of determining the Group Number classification as required by the Building Code of Australia for the control of fire spread on interior wall and ceiling linings.

The result achieved was:

Classification - Group 2

Specific Extinction - Less than 250m<sup>2</sup>/kg

**Warranty** 5-year warranty. Visit [baresque.com.au/warranty](https://www.baresque.com.au/warranty) for complete details.

# HANAMI SILK

Wallcoverings » Commercial Wallcoverings

---

## Lead Time

- 2-weeks (approx.) from Wednesday, subject to stock availability.
  - Additional 1-week for Western Australia.
  - Express delivery is available subject to a surcharge. Contact Baresque for details and pricing.
- 

## Suggested Installation

Reverse hang / overlap and double cut.  
Baresque recommends and supply Roman brand adhesives and primers.

---

## Care Instructions

Always use a clean, white, soft cloth.

Use cloth with any of the following in preferred order of us:

1: Clear warm water

2: Mild solution of liquid detergent and warm water

3: Isopropyl Alcohol (a.k.a. rubbing alcohol)

Remove any detergent with a clean, damp cloth. Gently pat dry.

For more difficult stains, dampen a soft white cloth with a solution of household bleach (10% bleach / 90% water). Rub gently.

Rinse with a water dampened cloth to remove bleach concentration.

DO NOT USE solvent based or concentrated abrasive cleaning agents, lacquer thinners, nail polish remover as these may cause discolouration over a period of time.

Always test in an inconspicuous area first. If care instructions don't deliver the expected results, cease cleaning method immediately and contact Baresque for assistance.

---

# HANAMI SILK

Wallcoverings » Commercial Wallcoverings

---

## Colour & Finish Options