



Brand: **Symphony**

Applications: **Walls**

INK'D

Wallcoverings » Commercial Wallcoverings

Ink'd is a 137cm wide commercial wallcovering with multi-colour ombre effects. Available in 7 colourways. It's versatile, durable, and easy to clean.

✓ Bleach Cleanable

✓ EPD Certified

✓ HPD Certified

✓ Coordinate available

Composition Vinyl face on a fabric backing 20oz (452 g/m²)

Environmental Info Formaldehyde free

Heavy metals free

Perfluorooctanoic acid free

No solvent inks

Low VOC emissions. Any VOCs dissipate quickly (faster than paint) through normal ventilation and have no recognized adverse impact on indoor air quality.

Durability means products do not need to be replaced regularly due to wear and tear and being cleanable, vinyl products are ideal for helping keep commercial environments clean of bacteria.

Baresque will only deal with vinyl manufacturers that comply with applicable state and federal regulations, provide a factory that is safe and clean for its employees to work in, recycle scrap and inks during the manufacturing process to minimize waste related to production.

Pattern Repeat Size N/A

Roll Size 137cm wide x 27.4m - Available by the lineal metre

Fire Rating Tested in accordance with AS ISO 9705 2003 for the purpose of determining the Group Number classification as required by the Building Code of Australia for the control of fire spread on interior wall and ceiling linings.

The result achieved was:

Classification - Group 2

Specific Extinction - Less than 250m²/kg

Lead Time

- 2-weeks (approx.) from Wednesday, subject to stock availability.
- Additional 1-week for Western Australia.
- Express delivery is available subject to a surcharge. Contact Baresque for details and pricing.

Suggested Installation

Non reverse hang/overlap double cut.

Baresque recommends and supplies Roman brand adhesives and primers.

Care Instructions

Use cloth with any of the following in preferred order of use:

1: Clear warm water

2: Mild solution of liquid detergent and warm water

3: Isopropyl Alcohol (a.k.a. rubbing alcohol)

Remove any detergent with a clean, damp cloth. Gently pat dry.

For more difficult stains, dampen a soft white cloth with a solution of household bleach (10% bleach / 90% water). Rub gently.

Rinse with a water dampened cloth to remove bleach concentration.

Do not use solvent based or concentrated abrasive cleaning agents, lacquer thinners or nail polish remover as these may cause discolouration over a period of time.

Always test in an inconspicuous area first.

If care instructions don't deliver the expected results, cease cleaning method immediately and contact Baresque for assistance.

Warranty

5-year warranty. Visit baresque.com.au/warranty for complete details.

Colour & Finish Options

COLOURWAY CARD



AZ53205 AFTERNOON
CALM



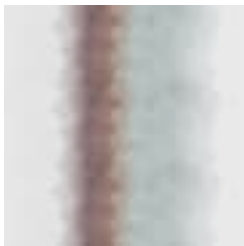
AZ53206 PAINTED
HORIZON



AZ53207 DAZZLING
DUSK



AZ53208 MORNING
CLOUD



AZ53209 EVENING
MIST



AZ53210 OCEAN FOG



AZ53211 VIVID CLOUD