

LOMBARD

Wallcoverings » Commercial Wallcoverings



Brand: **Versa**

LOMBARD

Wallcoverings » Commercial Wallcoverings



A132-011
GHIRARDELLI



A132-127 PORTERO
AVE



A132-153 MISSION ST



A132-194 RINCON
HILL



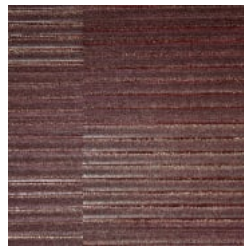
A132-199 TARAVAL



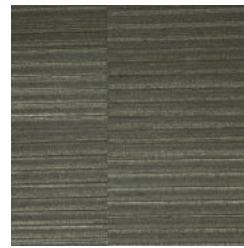
A132-200 PRESIDIO
BLVD



A132-320 MARINA
BLVD



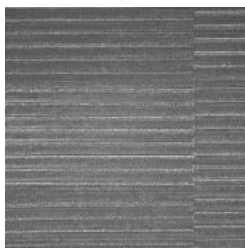
A132-345 NOB HILL



A132-383 GEARY BLVD



A132-473 CHINATOWN



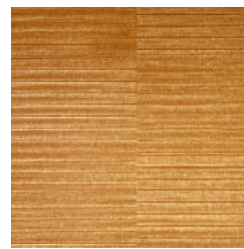
A132-567 PORTOLA



A132-570 JACKSON
SQ



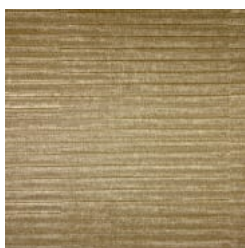
A132-584 BALBOA ST



A132-661
EMBARCADERO



A132-712 CALIFORNIA
ST



A132-855 VAN NESS
AVE



A132-868 BAY ST



A132-891 PACIFIC
HEIGHTS

LOMBARD

Wallcoverings » Commercial Wallcoverings

Lombard is a 137cm wide commercial wallcovering with textured stripes that's available in 6 colourways. It's versatile, durable, and easy to clean.

✓ Bleach Cleanable

✓ EPD Certified

✓ HPD Certified

Description Stripes of texture that enriches the ambient

Roll Size 137cm wide x 27.4m - Available by the lineal metre

Composition Vinyl face on a fabric backing Equivalent to 20oz (452 g/m²)

Pattern Repeat Size N/A

Environmental Info Formaldehyde free

Heavy metals free

Perfluorooctanoic acid free

No solvent inks

Low VOC emissions. Any VOCs dissipate quickly (faster than paint) through normal ventilation and have no recognized adverse impact on indoor air quality.

Durability means products do not need to be replaced regularly due to wear and tear and being cleanable, vinyl products are ideal for helping keep commercial environments clean of bacteria.

Baresque will only deal with vinyl manufacturers that comply with applicable state and federal regulations, provide a factory that is safe and clean for its employees to work in, recycle scrap and inks during the manufacturing process to minimize waste related to production.

Fire Rating Tested in accordance with AS ISO 9705 2003 for the purpose of determining the Group Number classification as required by the Building Code of Australia for the control of fire spread on interior wall and ceiling linings.

The result achieved was:

Classification - Group 2

Specific Extinction - Less than 250m²/kg

Warranty 5-year warranty. Visit [baresque.com.au/warranty](https://www.baresque.com.au/warranty) for complete details.

LOMBARD

Wallcoverings » Commercial Wallcoverings

Lead Time

- 2-weeks (approx.) from Wednesday, subject to stock availability.
 - Additional 1-week for Western Australia.
 - Express delivery is available subject to a surcharge. Contact Baresque for details and pricing.
-

Suggested Installation

Reverse hang / overlap and double cut.
Baresque recommends and supply Roman brand adhesives and primers.

Care Instructions

Always use a clean, white, soft cloth.

Use cloth with any of the following in preferred order of us:

- 1: Clear warm water
- 2: Mild solution of liquid detergent and warm water
- 3: Isopropyl Alcohol (a.k.a. rubbing alcohol)

Remove any detergent with a clean, damp cloth. Gently pat dry.

For more difficult stains, dampen a soft white cloth with a solution of household bleach (10% bleach / 90% water). Rub gently.

Rinse with a water dampened cloth to remove bleach concentration.

DO NOT USE solvent based or concentrated abrasive cleaning agents, lacquer thinners, nail polish remover as these may cause discolouration over a period of time.

Always test in an inconspicuous area first. If care instructions don't deliver the expected results, cease cleaning method immediately and contact Baresque for assistance.

LOMBARD

Wallcoverings » Commercial Wallcoverings

Colour & Finish Options