

PARALLEL ASL

Wallcoverings » Commercial Wallcoverings



Brand: **Versa**

PARALLEL ASL

Wallcoverings » Commercial Wallcoverings

COLOURWAY CARD

COLOURWAY CARD



A195-018 ARGENT



A195-127 CHAMOMILE



A195-154
CHAMPAGNE



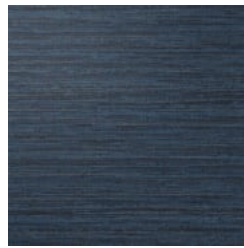
A195-193 PROSECCO



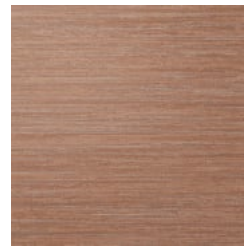
A195-226 EVERGREEN



A195-283 ARIEL



A195-342 DEEP SEA



A195-435 JUPITER



A195-502 SLATE



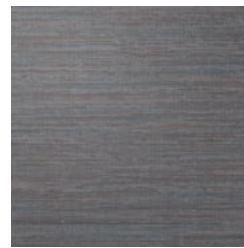
A195-512 LITHO



A195-537 STERLING



A195-541 ASHEN



A195-558 LUNAR



A195-561 CHARCOAL



A195572 CORONADO



A195-596
SANDSTONE

PARALLEL ASL

Wallcoverings » Commercial Wallcoverings

Parallel is a 137cm wide commercial wallcovering embossed with a delicate canvas and silk texture that's available in 16 colourways.

✓ **Bleach Cleanable**

Description Accented with a glazed effect over a multi-color print, Parallel showcases artistic brushstrokes, embossed with a delicate canvas and silk texture. Available in 16 colourways ranging from expressive rich shades of turquoise and indigo through to an extensive selection of sophisticated neutrals, this new pattern fits into all types of interior spaces.

Roll Size 137cm wide x 27.4m - Available by the lineal metre

Composition Vinyl face on a fabric backing Equivalent to 20oz (452g/m²)

Pattern Repeat Size N/A

Environmental Info

- Formaldehyde free
- Heavy metals free
- Perfluorooctanoic acid free
- No solvent inks

Low VOC emissions. Any VOCs dissipate quickly (faster than paint) through normal ventilation and have no recognized adverse impact on indoor air quality.

Durability means products do not need to be replaced regularly due to wear and tear and being cleanable, vinyl products are ideal for helping keep commercial environments clean of bacteria.

Baresque will only deal with vinyl manufacturers that comply with applicable state and federal regulations, provide a factory that is safe and clean for its employees to work in, recycle scrap and inks during the manufacturing process to minimize waste related to production.

Fire Rating Tested in accordance with AS ISO 9705 2003 for the purpose of determining the Group Number classification as required by the Building Code of Australia for the control of fire spread on interior wall and ceiling linings.

The result achieved was:
Classification - Group 2
Specific Extinction - Less than 250m²/kg

Warranty 5-year warranty. Visit [baresque.com.au/warranty](https://www.baresque.com.au/warranty) for complete details.

PARALLEL ASL

Wallcoverings » Commercial Wallcoverings

Lead Time

- 2-weeks (approx.) from Wednesday, subject to stock availability.
 - Additional 1-week for Western Australia.
 - Express delivery is available subject to a surcharge. Contact Baresque for details and pricing.
-

Suggested Installation

Reverse hang / overlap and double cut.
Baresque recommends and supply Roman brand adhesives and primers.

Care Instructions

Always use a clean, white, soft cloth.

Use cloth with any of the following in preferred order of us:

- 1: Clear warm water
- 2: Mild solution of liquid detergent and warm water
- 3: Isopropyl Alcohol (a.k.a. rubbing alcohol)

Remove any detergent with a clean, damp cloth. Gently pat dry.

For more difficult stains, dampen a soft white cloth with a solution of household bleach (10% bleach / 90% water). Rub gently.

Rinse with a water dampened cloth to remove bleach concentration.

DO NOT USE solvent based or concentrated abrasive cleaning agents, lacquer thinners, nail polish remover as these may cause discolouration over a period of time.

Always test in an inconspicuous area first. If care instructions don't deliver the expected results, cease cleaning method immediately and contact Baresque for assistance.

PARALLEL ASL

Wallcoverings » Commercial Wallcoverings

Colour & Finish Options