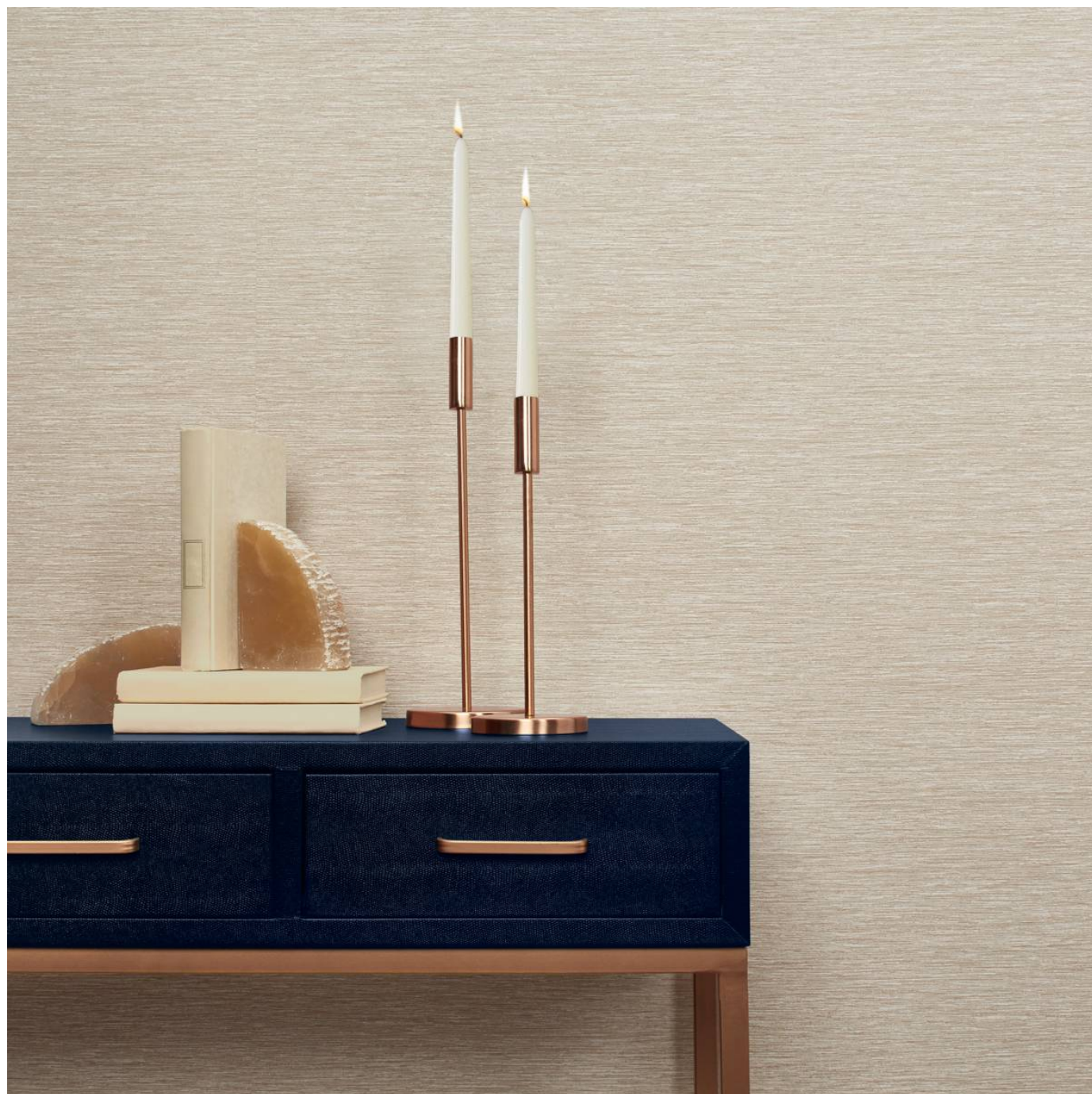


PITTER PATTERN

Wallcoverings » Commercial Wallcoverings



Brand: **Versa**

PITTER PATTERN

Wallcoverings » Commercial Wallcoverings



COLOURWAY CARD



PTP4701



PTP4702



PTP4703



PTP4704



PTP4705



PTP4706



PTP4707



PTP4708



PTP4709



PTP4710



PTP4711



PTP4712



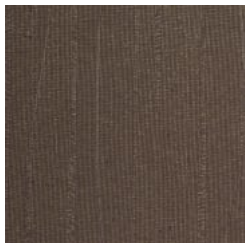
PTP4713



PTP4714



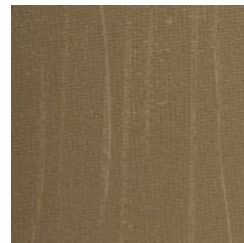
PTP4715



PTP4716



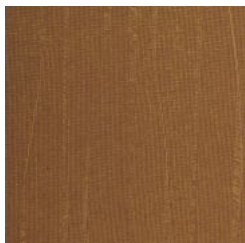
PTP4717



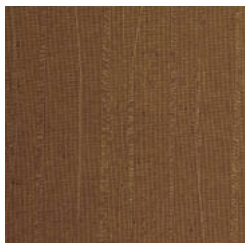
PTP4718



PTP4719



PTP4720



PTP4721

PITTER PATTER

Wallcoverings » Commercial Wallcoverings

Pitter Patter is a 137cm wide commercial wallcovering with freshly laid linen stripes displayed in 21 colours. Durable versatile and heavy metals free

Description Strips of freshly laid linen mache cover your wall with this addition. The appearance of frayed edging gives feathered detail to the layering cloths, adding warmth and authenticity.

Roll Size 137cm wide x 27.4m - Available by the lineal metre

Composition Vinyl face on a fabric backing Equivalent to 20oz (452g/m²)

Pattern Repeat Size N/A

Environmental Info

- Formaldehyde free
- Heavy metals free
- Perfluorooctanoic acid free
- No solvent inks

Low VOC emissions. Any VOCs dissipate quickly (faster than paint) through normal ventilation and have no recognized adverse impact on indoor air quality.

Durability means products do not need to be replaced regularly due to wear and tear and being cleanable, vinyl products are ideal for helping keep commercial environments clean of bacteria.

Baresque will only deal with vinyl manufacturers that comply with applicable state and federal regulations, provide a factory that is safe and clean for its employees to work in, recycle scrap and inks during the manufacturing process to minimize waste related to production.

Fire Rating Tested in accordance with AS ISO 9705 2003 for the purpose of determining the Group Number classification as required by the Building Code of Australia for the control of fire spread on interior wall and ceiling linings.

The result achieved was:
Classification - Group 2
Specific Extinction - Less than 250m²/kg

Warranty 5-year warranty. Visit [baresque.com.au/warranty](https://www.baresque.com.au/warranty) for complete details.

PITTER PATTER

Wallcoverings » Commercial Wallcoverings

Lead Time

- 2-weeks (approx.) from Wednesday, subject to stock availability.
 - Additional 1-week for Western Australia.
 - Express delivery is available subject to a surcharge. Contact Baresque for details and pricing.
-

Suggested Installation

Non reverse hang/overlap double cut.
Baresque recommends and supplies Roman brand adhesives and primers.

Care Instructions

Use cloth with any of the following in preferred order of use:

- 1: Clear warm water
- 2: Mild solution of liquid detergent and warm water
- 3: Isopropyl Alcohol (a.k.a. rubbing alcohol)

Remove any detergent with a clean, damp cloth. Gently pat dry.

For more difficult stains, dampen a soft white cloth with a solution of household bleach (10% bleach / 90% water). Rub gently.

Rinse with a water dampened cloth to remove bleach concentration.

Do not use solvent based or concentrated abrasive cleaning agents, lacquer thinners or nail polish remover as these may cause discolouration over a period of time.

Always test in an inconspicuous area first.

If care instructions don't deliver the expected results, cease cleaning method immediately and contact Baresque for assistance.

PITTER PATTER

Wallcoverings » Commercial Wallcoverings

Colour & Finish Options