

SANDSCAPE

Wallcoverings » Commercial Wallcoverings

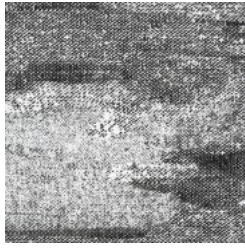


Brand: **Koroseal**

SANDSCAPE

Wallcoverings » Commercial Wallcoverings

COLOURWAY CARD



SP21-01 TUXEDO



SP21-02 FOG



SP21-06 BLUSH



SP21-07 MAJOR GREY



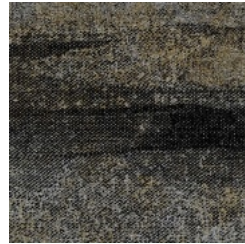
SP21-08 GRAPHITE



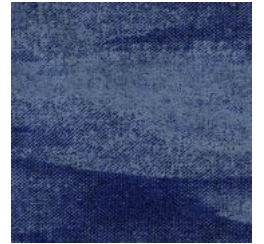
SP21-11
COBBLESTONE



SP21-12 CAUSEWAY



SP21-14 METAL



SP21-16 ADMIRAL



SP21-19 SEAFOAM



SP21-21 SALT

SANDSCAPE

Wallcoverings » Commercial Wallcoverings

Sandscape is a 137cm wide commercial wallcovering with soft undulating curves that's available in 11 colourways. Durable, versatile and easy to clean.

✓ Bleach Cleanable

Description As we see hard lines give way to soft undulating curves, the Sandscape design re-creates the pleasure we feel walking on the rolling sandy beaches or laying on our back while watching the clouds float across the sky, creating positive emotions. Coordinates beautifully with Linden II.

Roll Size 137cm wide x 27.4m - Available by the lineal metre

Composition Vinyl face on a fabric backing 20oz (452 g/m²)

Pattern Repeat Size 45cm V / 67.3cm H

Environmental Info

- Formaldehyde free
- Heavy metals free
- Perfluorooctanoic acid free
- No solvent inks

Low VOC emissions. Any VOCs dissipate quickly (faster than paint) through normal ventilation and have no recognized adverse impact on indoor air quality.

Durability means products do not need to be replaced regularly due to wear and tear and being cleanable, vinyl products are ideal for helping keep commercial environments clean of bacteria.

Baresque will only deal with vinyl manufacturers that comply with applicable state and federal regulations, provide a factory that is safe and clean for its employees to work in, recycle scrap and inks during the manufacturing process to minimize waste related to production.

Fire Rating Tested in accordance with AS ISO 9705 2003 for the purpose of determining the Group Number classification as required by the Building Code of Australia for the control of fire spread on interior wall and ceiling linings.

The result achieved was:
Classification - Group 2
Specific Extinction - Less than 250m²/kg

Warranty 5-year warranty. Visit [baresque.com.au/warranty](https://www.baresque.com.au/warranty) for complete details.

SANDSCAPE

Wallcoverings » Commercial Wallcoverings

- Lead Time**
- 2-weeks (approx.) from Wednesday, subject to stock availability.
 - Additional 1-week for Western Australia.
 - Express delivery is available subject to a surcharge. Contact Baresque for details and pricing.
-

Suggested Installation

Non reverse hang/overlap double cut.

Baresque recommends and supplies Roman brand adhesives and primers.

Care Instructions

Use cloth with any of the following in preferred order of use:

- 1: Clear warm water
- 2: Mild solution of liquid detergent and warm water
- 3: Isopropyl Alcohol (a.k.a. rubbing alcohol)

Remove any detergent with a clean, damp cloth. Gently pat dry.

For more difficult stains, dampen a soft white cloth with a solution of household bleach (10% bleach / 90% water). Rub gently.

Rinse with a water dampened cloth to remove bleach concentration.

Do not use solvent based or concentrated abrasive cleaning agents, lacquer thinners or nail polish remover as these may cause discolouration over a period of time.

Always test in an inconspicuous area first.

If care instructions don't deliver the expected results, cease cleaning method immediately and contact Baresque for assistance.

SANDSCAPE

Wallcoverings » Commercial Wallcoverings

Colour & Finish Options