

# SHIBORI CHEVRON

Wallcoverings » Commercial Wallcoverings



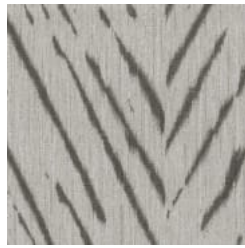
Brand: **Koroseal**

# SHIBORI CHEVRON

Wallcoverings » Commercial Wallcoverings

## COLOURWAY CARD

COLOURWAY CARD



SG22-06 AVENUE



SG22-10 CAVALIER



SG22-05 FRIEZ



SG22-03 GARDEN  
PATH



SG22-01 INDIGO  
WATERS



SG22-04 MERMAIDS



SG22-02 ORLEANDER



SG22-09 PEAR TREE



SG22-08 PIANO



SG22-07 WATER  
CASTLE



shibori-  
chevron\_promo-2.jpg

# SHIBORI CHEVRON

Wallcoverings » Commercial Wallcoverings

Shinori Chevron is a 137cm wide commercial wallcovering inspired by a Japanese dyeing technique with a chevron pattern that's available in 10 colours.

## ✓ Bleach Cleanable

Description	Shibori Chevron takes inspiration from the Japanese dyeing technique Shibori. A burst of color in the oldest handcrafted indigo sets the tone for a vibrant palette enhanced by soft neutrals that coordinate with its vertical companion Galerie.
Roll Size	137cm wide x 27.4m - Available by the lineal metre
Composition	Vinyl face on a fabric backing
Pattern Repeat Size	45cm V
Environmental Info	<p>Formaldehyde free</p> <p>Heavy metals free</p> <p>Perfluorooctanoic acid free</p> <p>No solvent inks</p> <p>Low VOC emissions. Any VOCs dissipate quickly (faster than paint) through normal ventilation and have no recognized adverse impact on indoor air quality.</p> <p>Durability means products do not need to be replaced regularly due to wear and tear and being cleanable, vinyl products are ideal for helping keep commercial environments clean of bacteria.</p> <p>Baresque will only deal with vinyl manufacturers that comply with applicable state and federal regulations, provide a factory that is safe and clean for its employees to work in, recycle scrap and inks during the manufacturing process to minimize waste related to production.</p>
Fire Rating	<p>Tested in accordance with AS ISO 9705 2003 for the purpose of determining the Group Number classification as required by the Building Code of Australia for the control of fire spread on interior wall and ceiling linings.</p> <p>The result achieved was: Classification - Group 2 Specific Extinction - Less than 250m<sup>2</sup>/kg</p>
Warranty	5-year warranty. Visit <a href="https://www.baresque.com.au/warranty">baresque.com.au/warranty</a> for complete details.

# SHIBORI CHEVRON

Wallcoverings » Commercial Wallcoverings

---

- Lead Time**
- 2-weeks (approx.) from Wednesday, subject to stock availability.
  - Additional 1-week for Western Australia.
  - Express delivery is available subject to a surcharge. Contact Baresque for details and pricing.
- 

**Suggested Installation**

Non reverse hang/overlap double cut.

Baresque recommends and supplies Roman brand adhesives and primers.

---

**Care Instructions**

Use cloth with any of the following in preferred order of use:

- 1: Clear warm water
- 2: Mild solution of liquid detergent and warm water
- 3: Isopropyl Alcohol (a.k.a. rubbing alcohol)

Remove any detergent with a clean, damp cloth. Gently pat dry.

For more difficult stains, dampen a soft white cloth with a solution of household bleach (10% bleach / 90% water). Rub gently.

Rinse with a water dampened cloth to remove bleach concentration.

Do not use solvent based or concentrated abrasive cleaning agents, lacquer thinners or nail polish remover as these may cause discolouration over a period of time.

Always test in an inconspicuous area first.

If care instructions don't deliver the expected results, cease cleaning method immediately and contact Baresque for assistance.

---

# SHIBORI CHEVRON

Wallcoverings » Commercial Wallcoverings

---

## Colour & Finish Options