

# STEP UP

Wallcoverings » Commercial Wallcoverings



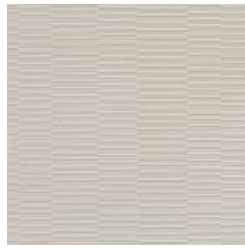
Brand: **Genon**

# STEP UP

Wallcoverings » Commercial Wallcoverings

## COLOURWAY CARD

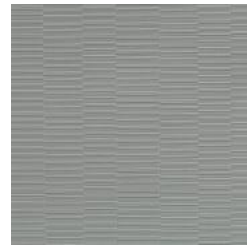
COLOURWAY CARD



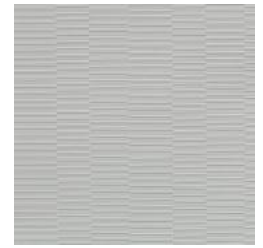
W2-ST-01  
MOONSHINE



W2-ST-04 SNOWFALL



W2-ST-02  
GLIMMERING GREY



W2-ST-05 TINSEL



W2-ST-03 BLACK  
LACQUER



W2-ST-06 NIGHT  
BLUE



W2-ST-07 FROSTED



W2-ST-08 SOLID  
PEWTER



W2-ST-09 SHEER  
TAUPE



W2-ST-10 PEARLY



W2-ST-11  
CHAMPAGNE



W2-ST-12 MAUVE  
QUARTZ



W2-ST-13 FAIRY DUST



W2-ST-14 AZTEC  
GOLD



W2-ST-15 AGED  
BRONZE



W2-ST-16 ROSALINE



W2-ST-17 RUSTY RED



W2-ST-18 EMERALD

# STEP UP

Wallcoverings » Commercial Wallcoverings

Step Up is a 137cm wide commercial wallcovering with linear, stacked blocks embossing that's available in 18 colourways.

✓ **Bleach Cleanable**

**Description** Contemporary and sleek, Step Up has it all! Linear, stacked blocks are revealed from the shadows and highlights of the deep emboss creating levels and movement through the visual nuances.

**Roll Size** 137cm wide x 27.4m - Available by the lineal metre

**Composition** Vinyl face on a fabric backing Equivalent to 20oz (452g/m<sup>2</sup>)

**Pattern Repeat Size** N/A

**Environmental Info**

- Formaldehyde free
- Heavy metals free
- Perfluorooctanoic acid free
- No solvent inks

Low VOC emissions. Any VOCs dissipate quickly (faster than paint) through normal ventilation and have no recognized adverse impact on indoor air quality.

Durability means products do not need to be replaced regularly due to wear and tear and being cleanable, vinyl products are ideal for helping keep commercial environments clean of bacteria.

Baresque will only deal with vinyl manufacturers that comply with applicable state and federal regulations, provide a factory that is safe and clean for its employees to work in, recycle scrap and inks during the manufacturing process to minimize waste related to production.

**Fire Rating** Tested in accordance with AS ISO 9705 2003 for the purpose of determining the Group Number classification as required by the Building Code of Australia for the control of fire spread on interior wall and ceiling linings.

The result achieved was:  
Classification - Group 2  
Specific Extinction - Less than 250m<sup>2</sup>/kg

**Warranty** 5-year warranty. Visit [baresque.com.au/warranty](https://www.baresque.com.au/warranty) for complete details.

# STEP UP

Wallcoverings » Commercial Wallcoverings

---

## Lead Time

- 2-weeks (approx.) from Wednesday, subject to stock availability.
  - Additional 1-week for Western Australia.
  - Express delivery is available subject to a surcharge. Contact Baresque for details and pricing.
- 

## Suggested Installation

Reverse hang / overlap and double cut.  
Baresque recommends and supply Roman brand adhesives and primers.

---

## Care Instructions

Use cloth with any of the following in preferred order of use:

- 1: Clear warm water
- 2: Mild solution of liquid detergent and warm water
- 3: Isopropyl Alcohol (a.k.a. rubbing alcohol)

Remove any detergent with a clean, damp cloth. Gently pat dry.

For more difficult stains, dampen a soft white cloth with a solution of household bleach (10% bleach / 90% water). Rub gently.

Rinse with a water dampened cloth to remove bleach concentration.

Do not use solvent based or concentrated abrasive cleaning agents, lacquer thinners or nail polish remover as these may cause discolouration over a period of time.

Always test in an inconspicuous area first.

If care instructions don't deliver the expected results, cease cleaning method immediately and contact Baresque for assistance.

---

# STEP UP

Wallcoverings » Commercial Wallcoverings

---

## Colour & Finish Options