

TATTERSALL PLAID

Wallcoverings » Commercial Wallcoverings



Brand: **Koroseal**

TATTERSALL PLAID

Wallcoverings » Commercial Wallcoverings

COLOURWAY CARD

COLOURWAY CARD



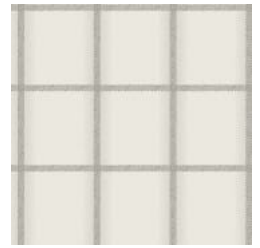
PT21-01 HEADLANDS



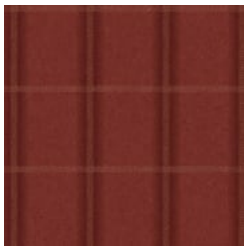
PT21-02 CASHMERE



PT21-03 WOOLERY



PT21-04 WILLOW
BARK



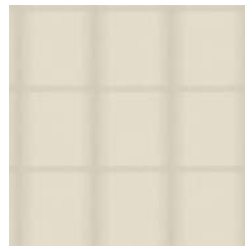
PT21-05 MULBERRY
LANE



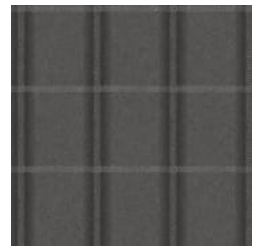
PT21-06 EASTPORT



PT21-07
STONEWASHED



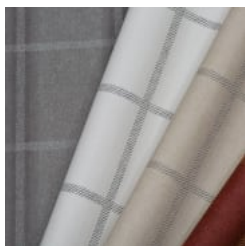
PT21-08 ALPACA



PT21-09 SOHO



PT21-10 CAPE COD



tattersall-plaid-
promo-2.jpg



tattersall-plaid-
promo-3.jpg

TATTERSALL PLAID

Wallcoverings » Commercial Wallcoverings

Tattersall Plaid is a 137cm wide commercial wallcovering with a combination of softened stripe and windowpane pattern that's available in 10 colours.

Description	<p>Tattersall Plaid is a clever, traditional plaid enriched with layers of woven texture. The combination of a softened stripe and windowpane weave provide visual comfort enhanced by the heathered linen background. Tattersall Plaid is offered in a classic palette of light neutrals to a dramatic black and white, mulberry red, and denim navy. The range of colour and contrast are influenced by travel adventures by the coast. Features + Benefits * Bleach cleanable * 10 Colourways * Highly durable * Anti-microbial * Low VOC</p>
Roll Size	137cm wide x 27.4m - Available by the lineal metre
Composition	Vinyl face on a non-woven backing
Pattern Repeat Size	61cm V
Environmental Info	<p>Formaldehyde free</p> <p>Heavy metals free</p> <p>Perfluorooctanoic acid free</p> <p>No solvent inks</p> <p>Low VOC emissions. Any VOCs dissipate quickly (faster than paint) through normal ventilation and have no recognized adverse impact on indoor air quality.</p> <p>Durability means products do not need to be replaced regularly due to wear and tear and being cleanable, vinyl products are ideal for helping keep commercial environments clean of bacteria.</p> <p>Baresque will only deal with vinyl manufacturers that comply with applicable state and federal regulations, provide a factory that is safe and clean for its employees to work in, recycle scrap and inks during the manufacturing process to minimize waste related to production.</p>
Fire Rating	<p>Tested in accordance with AS ISO 9705 2003 for the purpose of determining the Group Number classification as required by the Building Code of Australia for the control of fire spread on interior wall and ceiling linings.</p> <p>The result achieved was: Classification - Group 2 Specific Extinction - Less than 250m²/kg</p>
Warranty	5-year warranty. Visit baresque.com.au/warranty for complete details.

TATTERSALL PLAID

Wallcoverings » Commercial Wallcoverings

- Lead Time**
- 2-weeks (approx.) from Wednesday, subject to stock availability.
 - Additional 1-week for Western Australia.
 - Express delivery is available subject to a surcharge. Contact Baresque for details and pricing.
-

Suggested Installation

Non reverse hang/overlap double cut.

Baresque recommends and supplies Roman brand adhesives and primers.

Care Instructions

Use cloth with any of the following in preferred order of use:

- 1: Clear warm water
- 2: Mild solution of liquid detergent and warm water
- 3: Isopropyl Alcohol (a.k.a. rubbing alcohol)

Remove any detergent with a clean, damp cloth. Gently pat dry.

For more difficult stains, dampen a soft white cloth with a solution of household bleach (10% bleach / 90% water). Rub gently.

Rinse with a water dampened cloth to remove bleach concentration.

Do not use solvent based or concentrated abrasive cleaning agents, lacquer thinners or nail polish remover as these may cause discolouration over a period of time.

Always test in an inconspicuous area first.

If care instructions don't deliver the expected results, cease cleaning method immediately and contact Baresque for assistance.

TATTERSALL PLAID

Wallcoverings » Commercial Wallcoverings

Colour & Finish Options