

# VALLEJO

Wallcoverings » Commercial Wallcoverings



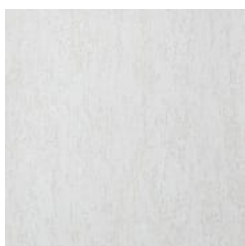
Brand: **Versa**

# VALLEJO

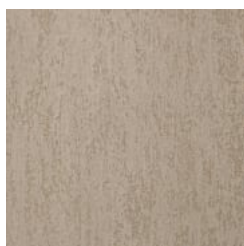
Wallcoverings » Commercial Wallcoverings

## COLOURWAY CARD

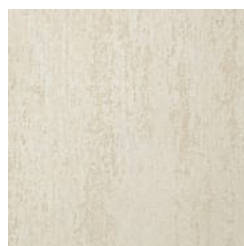
COLOURWAY CARD



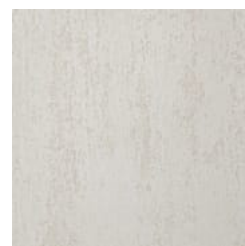
ASL-141095 TALC



ASL-141117  
TRAVERTINE



ASL-141139 CARRERA



ASL-141156 DOLOMITE



ASL-141185 CALCITE



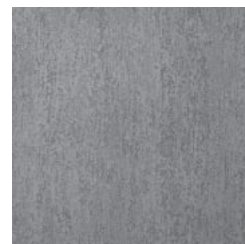
ASL-141365 CARBON



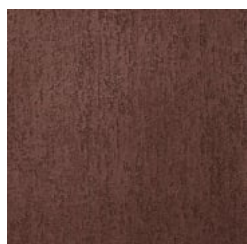
ASL-141513 IRON ORE



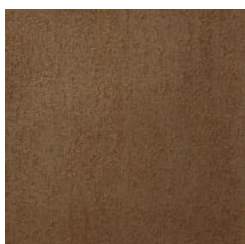
ASL-141521 HEMATITE



ASL-141594 SILVER  
STREAK



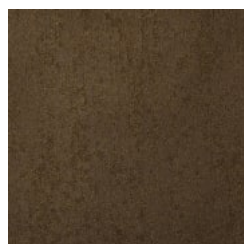
ASL-141699 DARK  
COPPER



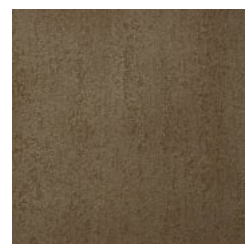
ASL-141712 ROSE  
GOLD



ASL-141745 NUGGET



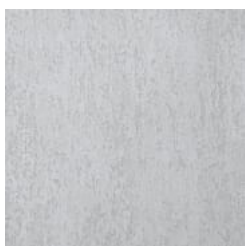
ASL-141763 ANTIQUE  
BRASS



ASL-141789 BRASS  
LANTERN



ASL-141816  
LIMESTONE



ASL-141830  
PLATINUM



ASL-141844  
CONCRETE



ASL-141852 ASPEN  
NICKEL

# VALLEJO

Wallcoverings » Commercial Wallcoverings

Vallejo is a 137cm wide commercial wallcovering with a rustic texture that's available in 18 colourways. Cost effective, easy to clean and durable.

✓ **Bleach Cleanable**

Description Captivating combination of texture and shine

Roll Size 137cm wide x 27.4m - Available by the lineal metre

Composition Vinyl face on a fabric backing 20oz (452 g/m<sup>2</sup>)

Pattern Repeat Size N/A

Environmental Info Formaldehyde free

Heavy metals free

Perfluorooctanoic acid free

No solvent inks

Low VOC emissions. Any VOCs dissipate quickly (faster than paint) through normal ventilation and have no recognized adverse impact on indoor air quality.

Durability means products do not need to be replaced regularly due to wear and tear and being cleanable, vinyl products are ideal for helping keep commercial environments clean of bacteria.

Baresque will only deal with vinyl manufacturers that comply with applicable state and federal regulations, provide a factory that is safe and clean for its employees to work in, recycle scrap and inks during the manufacturing process to minimize waste related to production.

Fire Rating Tested in accordance with AS ISO 9705 2003 for the purpose of determining the Group Number classification as required by the Building Code of Australia for the control of fire spread on interior wall and ceiling linings.

The result achieved was:

Classification - Group 2

Specific Extinction - Less than 250m<sup>2</sup>/kg

Warranty 5-year warranty. Visit [baresque.com.au/warranty](https://www.baresque.com.au/warranty) for complete details.

# VALLEJO

Wallcoverings » Commercial Wallcoverings

---

- Lead Time**
- 2-weeks (approx.) from Wednesday, subject to stock availability.
  - Additional 1-week for Western Australia.
  - Express delivery is available subject to a surcharge. Contact Baresque for details and pricing.
- 

**Suggested Installation**

Non reverse hang/overlap double cut.

Baresque recommends and supplies Roman brand adhesives and primers.

---

**Care Instructions**

Always use a clean, white, soft cloth.

Use cloth with any of the following in preferred order of us:

- 1: Clear warm water
- 2: Mild solution of liquid detergent and warm water
- 3: Isopropyl Alcohol (a.k.a. rubbing alcohol)

Remove any detergent with a clean, damp cloth. Gently pat dry.

For more difficult stains, dampen a soft white cloth with a solution of household bleach (10% bleach / 90% water). Rub gently.

Rinse with a water dampened cloth to remove bleach concentration.

DO NOT USE solvent based or concentrated abrasive cleaning agents, lacquer thinners, nail polish remover as these may cause discolouration over a period of time.

Always test in an inconspicuous area first. If care instructions don't deliver the expected results, cease cleaning method immediately and contact Baresque for assistance.

---

# VALLEJO

Wallcoverings » Commercial Wallcoverings

---

## Colour & Finish Options