

# WELL DRESSED

Wallcoverings » Commercial Wallcoverings



Brand: **Koroseal**

# WELL DRESSED

Wallcoverings » Commercial Wallcoverings

## COLOURWAY CARD

COLOURWAY CARD



W122-01 ESSENTIAL



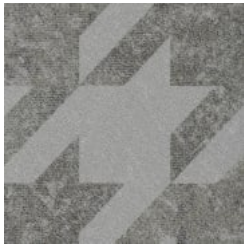
W122-02 COCKTAIL  
HOUR



W122-03 ALL  
OCCASION



W122-04 GLAM



W122-05 RUNWAY



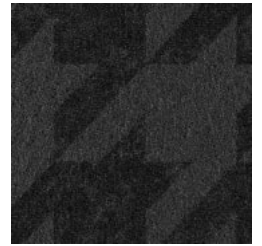
W122-06 CATWALK



W122-07 BUSINESS  
CASUAL



W122-08 EN VOGUE



W122-09 BLACK TIE



W122-10 FASHION  
WEEK

# WELL DRESSED

Wallcoverings » Commercial Wallcoverings

Well Dressed is a 137cm wide commercial wallcovering with a houndstooth design displayed in 10 colours. Durable, stain resistant and bleach cleanable.

## ✓ Bleach Cleanable

**Description** Well Dressed is fun, familiar and can add an upscale look to any area. Runways the world over will never tire of featuring the classic houndstooth design in varying sizes, shapes, and colours. With its roots in Scotland in the 1800's as an outer garment, this bold design can certainly dress up an interior and make a sophisticated statement for commercial applications.

**Roll Size** 137cm wide x 27.4m - Available by the lineal metre

**Composition** Vinyl face on a fabric backing Equivalent to 20oz (452g/m<sup>2</sup>)

**Pattern Repeat Size** 61cm V

**Environmental Info**

- Formaldehyde free
- Heavy metals free
- Perfluorooctanoic acid free
- No solvent inks

Low VOC emissions. Any VOCs dissipate quickly (faster than paint) through normal ventilation and have no recognized adverse impact on indoor air quality.

Durability means products do not need to be replaced regularly due to wear and tear and being cleanable, vinyl products are ideal for helping keep commercial environments clean of bacteria.

Baresque will only deal with vinyl manufacturers that comply with applicable state and federal regulations, provide a factory that is safe and clean for its employees to work in, recycle scrap and inks during the manufacturing process to minimize waste related to production.

**Fire Rating** Tested in accordance with AS ISO 9705 2003 for the purpose of determining the Group Number classification as required by the Building Code of Australia for the control of fire spread on interior wall and ceiling linings.

The result achieved was:  
Classification - Group 2  
Specific Extinction - Less than 250m<sup>2</sup>/kg

**Warranty** 5-year warranty. Visit [baresque.com.au/warranty](https://www.baresque.com.au/warranty) for complete details.

# WELL DRESSED

Wallcoverings » Commercial Wallcoverings

---

- Lead Time**
- 2-weeks (approx.) from Wednesday, subject to stock availability.
  - Additional 1-week for Western Australia.
  - Express delivery is available subject to a surcharge. Contact Baresque for details and pricing.
- 

**Suggested Installation**

Non reverse hang/overlap double cut.

Baresque recommends and supplies Roman brand adhesives and primers.

---

**Care Instructions**

Use cloth with any of the following in preferred order of use:

- 1: Clear warm water
- 2: Mild solution of liquid detergent and warm water
- 3: Isopropyl Alcohol (a.k.a. rubbing alcohol)

Remove any detergent with a clean, damp cloth. Gently pat dry.

For more difficult stains, dampen a soft white cloth with a solution of household bleach (10% bleach / 90% water). Rub gently.

Rinse with a water dampened cloth to remove bleach concentration.

Do not use solvent based or concentrated abrasive cleaning agents, lacquer thinners or nail polish remover as these may cause discolouration over a period of time.

Always test in an inconspicuous area first.

If care instructions don't deliver the expected results, cease cleaning method immediately and contact Baresque for assistance.

---

# WELL DRESSED

Wallcoverings » Commercial Wallcoverings

---

## Colour & Finish Options