

WHAT THE HEX

Wallcoverings » Commercial Wallcoverings



Brand: **Symphony**

WHAT THE HEX

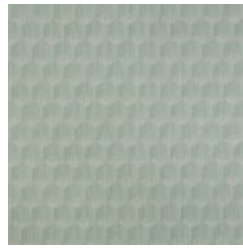
Wallcoverings » Commercial Wallcoverings

COLOURWAY CARD

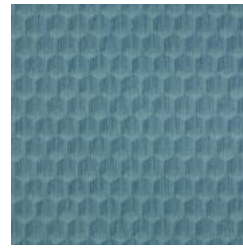
COLOURWAY CARD



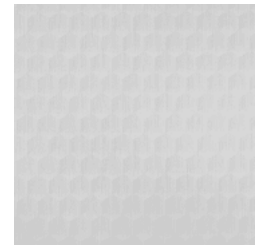
AZ53260 ACUTE
NEUTRAL



AZ53261 ADJACENT
AQUA



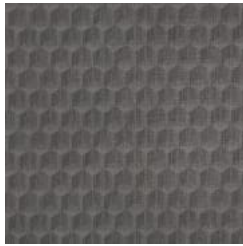
AZ53262 INKY
INVERSE



AZ53263 WHITE
VERTEX



AZ53264 GRAPH
GREY



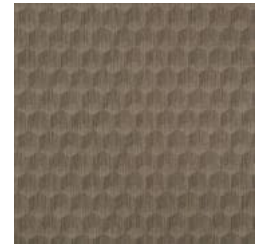
AZ53265 BISECT
BLACK



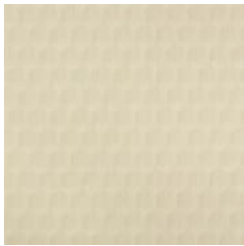
AZ53266 MEDIAN
MALT



AZ53267 TRIG TAN



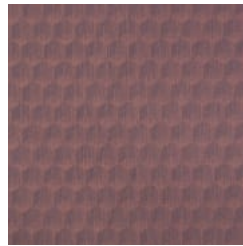
AZ53268 SABLE
SEGMENT



AZ53269 CONVEX
CREAM



AZ53270 OBLIQUE
BLUSH



AZ53271 POLYGON
PLUM

WHAT THE HEX

Wallcoverings » Commercial Wallcoverings

What The Hex is a 137cm wide commercial wallcovering with a honeycomb pattern displayed 12 colourways. Durable, cost effective and easy to clean.

✓ **Bleach Cleanable**

Roll Size 137cm wide x 27.4m - Available by the lineal metre

Composition Vinyl face on a fabric backing 20oz (452 g/m²)

Pattern Repeat Size 20cm V / 8cm H

Environmental Info Formaldehyde free

Heavy metals free

Perfluorooctanoic acid free

No solvent inks

Low VOC emissions. Any VOCs dissipate quickly (faster than paint) through normal ventilation and have no recognized adverse impact on indoor air quality.

Durability means products do not need to be replaced regularly due to wear and tear and being cleanable, vinyl products are ideal for helping keep commercial environments clean of bacteria.

Baresque will only deal with vinyl manufacturers that comply with applicable state and federal regulations, provide a factory that is safe and clean for its employees to work in, recycle scrap and inks during the manufacturing process to minimize waste related to production.

Fire Rating Tested in accordance with AS ISO 9705 2003 for the purpose of determining the Group Number classification as required by the Building Code of Australia for the control of fire spread on interior wall and ceiling linings.

The result achieved was:

Classification - Group 2

Specific Extinction - Less than 250m²/kg

Warranty 5-year warranty. Visit [baresque.com.au/warranty](https://www.baresque.com.au/warranty) for complete details.

Lead Time

- 2-weeks (approx.) from Wednesday, subject to stock availability.
- Additional 1-week for Western Australia.
- Express delivery is available subject to a surcharge. Contact Baresque for details and pricing.

WHAT THE HEX

Wallcoverings » Commercial Wallcoverings

Suggested Installation

Non reverse hang/overlap double cut.

Baresque recommends and supplies Roman brand adhesives and primers.

Care Instructions

Use cloth with any of the following in preferred order of use:

1: Clear warm water

2: Mild solution of liquid detergent and warm water

3: Isopropyl Alcohol (a.k.a. rubbing alcohol)

Remove any detergent with a clean, damp cloth. Gently pat dry.

For more difficult stains, dampen a soft white cloth with a solution of household bleach (10% bleach / 90% water). Rub gently.

Rinse with a water dampened cloth to remove bleach concentration.

Do not use solvent based or concentrated abrasive cleaning agents, lacquer thinners or nail polish remover as these may cause discolouration over a period of time.

Always test in an inconspicuous area first.

If care instructions don't deliver the expected results, cease cleaning method immediately and contact Baresque for assistance.

WHAT THE HEX

Wallcoverings » Commercial Wallcoverings

Colour & Finish Options