

CUT DIAMOND AVENUE

Wallcoverings » Decorative Wallcoverings



Brand: **Omexco**

Collection: **Avenue**

1300 306 399

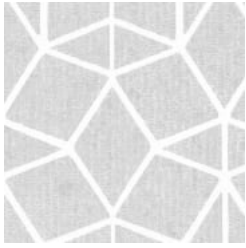
info@baresque.com.au

baresque.com.au

1 of 4

CUT DIAMOND AVENUE

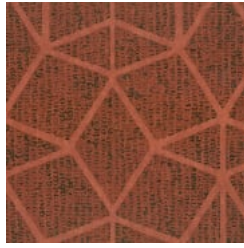
Wallcoverings » Decorative Wallcoverings



AVA1921 SILVER



AVA1922 GOLD



AVA1923 RUST



cut-diamond-avenue-
promo-2.jpg

CUT DIAMOND AVENUE

Wallcoverings » Decorative Wallcoverings

Cut Diamond is a 100cm wide decorative wallcovering with a overlaid design that's available in 3 colourways.

Roll Size 100cm wide - Available by the lineal metre

Composition Printed non-woven textile. Mixture of cellulose and polyester. 184 g/m²

Pattern Repeat Size 32cm V

Fire Rating Tested in accordance with AS ISO 9705 2003 for the purpose of determining the Group Number classification as required by the Building Code of Australia for the control of fire spread on interior wall and ceiling linings.

The result achieved was:
Classification - Group 2
Specific Extinction - Less than 250m²/kg

Warranty 2-year warranty. Visit [baresque.com.au/warranty](https://www.baresque.com.au/warranty) for complete details.

Lead Time

- 2-weeks (approx.) from Wednesday, subject to stock availability.
- Additional 1-week for Western Australia.
- Express delivery is available subject to a surcharge. Contact Baresque for details and pricing.

Suggested Installation Reverse hang alternate drops / butt join.
Baresque recommends and supplies Roman brand adhesives and primers.

Care Instructions

Always use a clean, white, soft cloth.

Remove liquid stains immediately using a dry cloth. Avoid hard scrubbing.

For tougher stains, dampen the cloth with warm water or a weak dilution of liquid detergent and apply being careful not to soak the material. Always work towards the centre of the stain so as to avoid further spreading.

Remove any detergent with a clean, damp cloth. Gently pat dry.

Always test in an inconspicuous area first.

CUT DIAMOND AVENUE

Wallcoverings » Decorative Wallcoverings

Colour & Finish Options