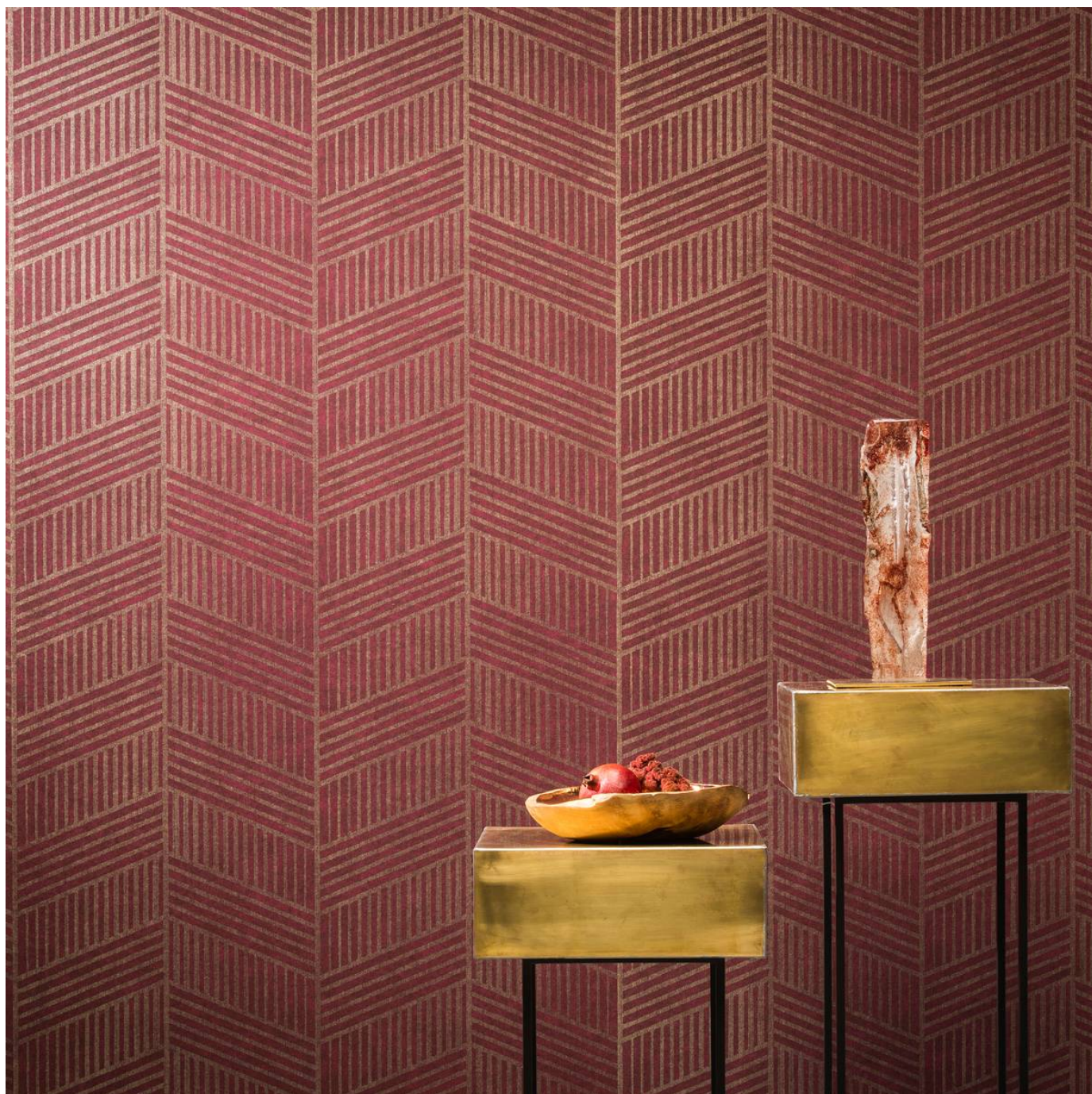


DECO CHEVRON AVENUE

Wallcoverings » Decorative Wallcoverings



Brand: **Omexco**

Collections: **Avenue**

Applications: **Walls**

1300 306 399

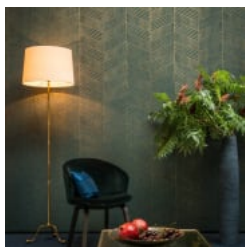
info@baresque.com.au

baresque.com.au

1 of 5

DECO CHEVRON AVENUE

Wallcoverings » Decorative Wallcoverings



decor-chevron-avenue-promo-2.jpg

DECO CHEVRON AVENUE

Wallcoverings » Decorative Wallcoverings

Deco chevron is a 100cm wide decorative wallcovering compose by a mixture of cellulose and polyester with a zig zag pattern displayed in 4 colourways.

Composition Printed non-woven textile. Mixture of cellulose and polyester. 184 g/m²

Pattern Repeat Size 21cm V

Roll Size 100cm wide - Available by the lineal metre

Fire Rating Tested in accordance with AS ISO 9705 2003 for the purpose of determining the Group Number classification as required by the Building Code of Australia for the control of fire spread on interior wall and ceiling linings.

The result achieved was:
Classification - Group 2
Specific Extinction - Less than 250m²/kg

Lead Time

- 2-weeks (approx.) from Wednesday, subject to stock availability.
- Additional 1-week for Western Australia.
- Express delivery is available subject to a surcharge. Contact Baresque for details and pricing.

Suggested Installation

Non-reverse hang / butt join.

If your order contains several numbered rolls of one single item/ reference, please first install the roll with the highest number, and then continue to install the other rolls in sequence, in descending order.

Measure and cut 3 strip lengths. Add 5 to 10 cm to top and bottom of each strip.

For printed patterns, plan your match from the roll before cutting

Mark each strip coming from the roll on the back and hang in the same sequence

Reverse alternate lengths when instructed to do so by label on the roll

DECO CHEVRON AVENUE

Wallcoverings » Decorative Wallcoverings

Care Instructions

Always use a clean, white, soft cloth.

Remove liquid stains immediately using a dry cloth. Avoid hard scrubbing.

For tougher stains, dampen the cloth with warm water or a weak dilution of liquid detergent and apply being careful not to soak the material. Always work towards the centre of the stain so as to avoid further spreading.

Remove any detergent with a clean, damp cloth. Gently pat dry.

Always test in an inconspicuous area first.

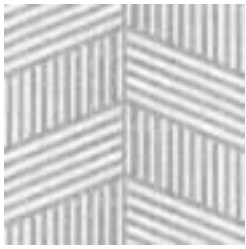
Warranty

2-year warranty. Visit [baresque.com.au/warranty](https://www.baresque.com.au/warranty) for complete details.

DECO CHEVRON AVENUE

Wallcoverings » Decorative Wallcoverings

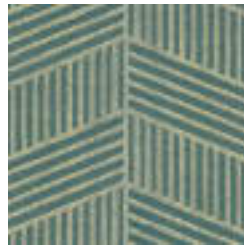
Colour & Finish Options



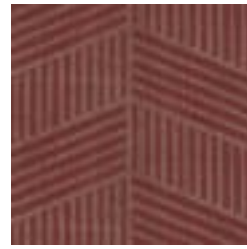
AVA2621 WHITE
SILVER



AVA2622 TAUPE
GOLD



AVA2623 MALACHITE



AVA2624 GARNET