

ETCH AVENUE

Wallcoverings » Decorative Wallcoverings



Brand: **Omexco**

Collection: **Avenue**

1300 306 399

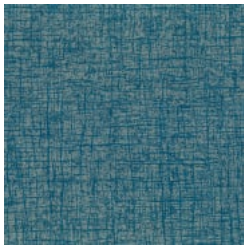
info@baresque.com.au

baresque.com.au

1 of 5

ETCH AVENUE

Wallcoverings » Decorative Wallcoverings



AVA5601 TEAL BLUE



AVA5602 COPPER



AVA5603 SALMON



AVA5604 POWDER
PINK



AVA5605 SAND



AVA5606 TWINE



AVA5607 JUTE



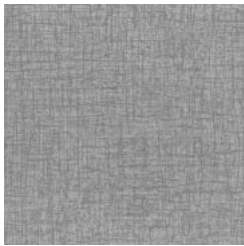
AVA5608 LINEN



AVA5609 PUTTY



AVA5610 STONE



AVA5611 PEWTER



AVA5612 MINT



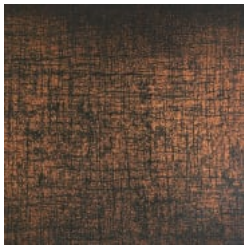
AVA5623 ROSE
QUARTZ



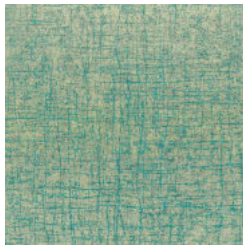
AVA5624 SILVER



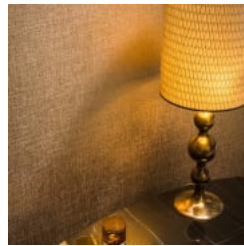
AVA5625 GOLD



AVA5626 BORDEAUX



AVA5627 EMERALD
GOLD



baresque-etch-
avenue-promo-2.jpg



baresque-etch-
avenue-promo-3.jpg



baresque-etch-
avenue-promo-4.jpg

ETCH AVENUE

Wallcoverings » Decorative Wallcoverings

Etch is a 100cm wide decorative wallcovering with an unique visual appeal playing colour off against texture. Available in 18 colourways.

Description	Unique visual appeal playing colour off against texture.
Roll Size	100cm wide - Available by the lineal metre
Composition	Printed non-woven textile. Mixture of cellulose and polyester. 184 g/m ²
Pattern Repeat Size	N/A
Fire Rating	<p>Tested in accordance with AS ISO 9705 2003 for the purpose of determining the Group Number classification as required by the Building Code of Australia for the control of fire spread on interior wall and ceiling linings.</p> <p>The result achieved was: Classification - Group 2 Specific Extinction - Less than 250m²/kg</p>
Warranty	2-year warranty. Visit baresque.com.au/warranty for complete details.
Lead Time	<ul style="list-style-type: none">• 2-weeks (approx.) from Wednesday, subject to stock availability.• Additional 1-week for Western Australia.• Express delivery is available subject to a surcharge. Contact Baresque for details and pricing.
Suggested Installation	<p>Reverse hang alternate drops / butt join.</p> <p>Baresque recommends and supplies Roman brand adhesives and primers.</p>
Care Instructions	<p>Always use a clean, white, soft cloth.</p> <p>Remove liquid stains immediately using a dry cloth. Avoid hard scrubbing.</p> <p>For tougher stains, dampen the cloth with warm water or a weak dilution of liquid detergent and apply being careful not to soak the material. Always work towards the centre of the stain so as to avoid further spreading.</p> <p>Remove any detergent with a clean, damp cloth. Gently pat dry.</p> <p>Always test in an inconspicuous area first.</p>

ETCH AVENUE

Wallcoverings » Decorative Wallcoverings

Additional Comments Search Parkour to find more patterns that coordinate with Espace.

ETCH AVENUE

Wallcoverings » Decorative Wallcoverings

Colour & Finish Options