

LADDER LOGIC

Wallcoverings » Decorative Wallcoverings

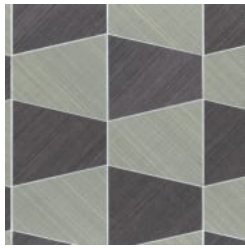


Brand: **Bi Mei**

LADDER LOGIC

Wallcoverings » Decorative Wallcoverings

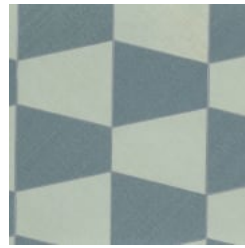
COLOURWAY CARD



G0094HJ6026 BLACK
AND WHITE



G0094HJ6027 OFF
WHITE



G0094HJ6028
ARCTIC



G0094HJ6029
COFFEE



G0094HJ6030 LILY
PAD



G0094HJ6031 WOOD
THRUSH

LADDER LOGIC

Wallcoverings » Decorative Wallcoverings

Ladder Logic is a 91cm wide decorative wallcovering with a double colour geometric pattern that's available in 6 colourways.

Roll Size 91cm wide x 5.5m - Available by the full roll only

Composition 50% sisal, 50% abaca on a paper backing

Pattern Repeat Size N/A

Fire Rating Tested in accordance with AS ISO 9705 2003 for the purpose of determining the Group Number classification as required by the Building Code of Australia for the control of fire spread on interior wall and ceiling linings.

The result achieved was:
Classification - Group 2
Specific Extinction - Less than 250m²/kg

Warranty 2-year warranty. Visit [baresque.com.au/warranty](https://www.baresque.com.au/warranty) for complete details.

Lead Time

- 2-weeks (approx.) from Wednesday, subject to stock availability.
- Additional 1-week for Western Australia.
- Express delivery is available subject to a surcharge. Contact Baresque for details and pricing.

Care Instructions

Always use a clean, white, soft cloth.

Remove liquid stains immediately using a dry cloth. Avoid hard scrubbing.

For tougher stains, dampen the cloth with warm water or a weak dilution of liquid detergent and apply being careful not to soak the material. Always work towards the centre of the stain so as to avoid further spreading.

Remove any detergent with a clean, damp cloth. Gently pat dry.

Always test in an inconspicuous area first.

LADDER LOGIC

Wallcoverings » Decorative Wallcoverings

Colour & Finish Options