

METALLIC FEELING

Wallcoverings » Decorative Wallcoverings



Brand: **Bi Mei**

METALLIC FEELING

Wallcoverings » Decorative Wallcoverings

COLOURWAY CARD

COLOURWAY CARD



G0102HJ6070
SPRUCE YELLOW



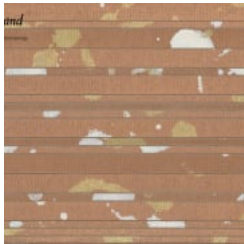
G0102HJ6071 PEAR
WHITE



G0102HJ6072 GINKGO
BILOBA YELLOW



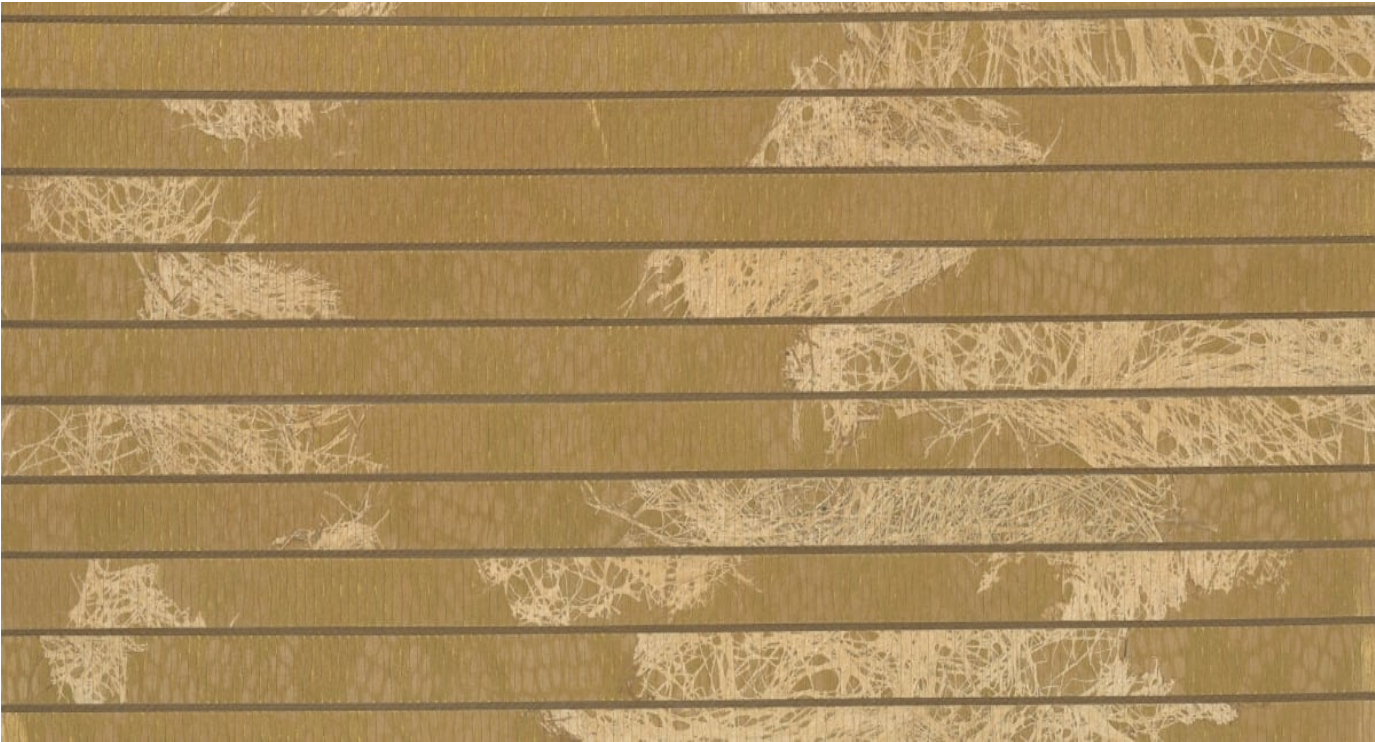
G0102HJ6073 AMBER
GOLD



G0102HJ6074 MANGO
GOLD

METALLIC FEELING

Wallcoverings » Decorative Wallcoverings



Metallic Feeling is a natural decorative wallcovering with a horizontal textured pattern that's available in 5 colourways.

Roll Size	91cm wide x 11m - Available by the full roll only
Composition	Banana fibre with paper pulp on a paper backing
Pattern Repeat Size	N/A
Fire Rating	<p>Tested in accordance with AS ISO 9705 2003 for the purpose of determining the Group Number classification as required by the Building Code of Australia for the control of fire spread on interior wall and ceiling linings.</p> <p>The result achieved was: Classification - Group 2 Specific Extinction - Less than 250m²/kg</p>
Warranty	2-year warranty. Visit baresque.com.au/warranty for complete details.

METALLIC FEELING

Wallcoverings » Decorative Wallcoverings

Lead Time

- 2-weeks (approx.) from Wednesday, subject to stock availability.
 - Additional 1-week for Western Australia.
 - Express delivery is available subject to a surcharge. Contact Baresque for details and pricing.
-

Care Instructions

Always use a clean, white, soft cloth.

Remove liquid stains immediately using a dry cloth. Avoid hard scrubbing.

For tougher stains, dampen the cloth with warm water or a weak dilution of liquid detergent and apply being careful not to soak the material. Always work towards the centre of the stain so as to avoid further spreading.

Remove any detergent with a clean, damp cloth. Gently pat dry.

Always test in an inconspicuous area first.
