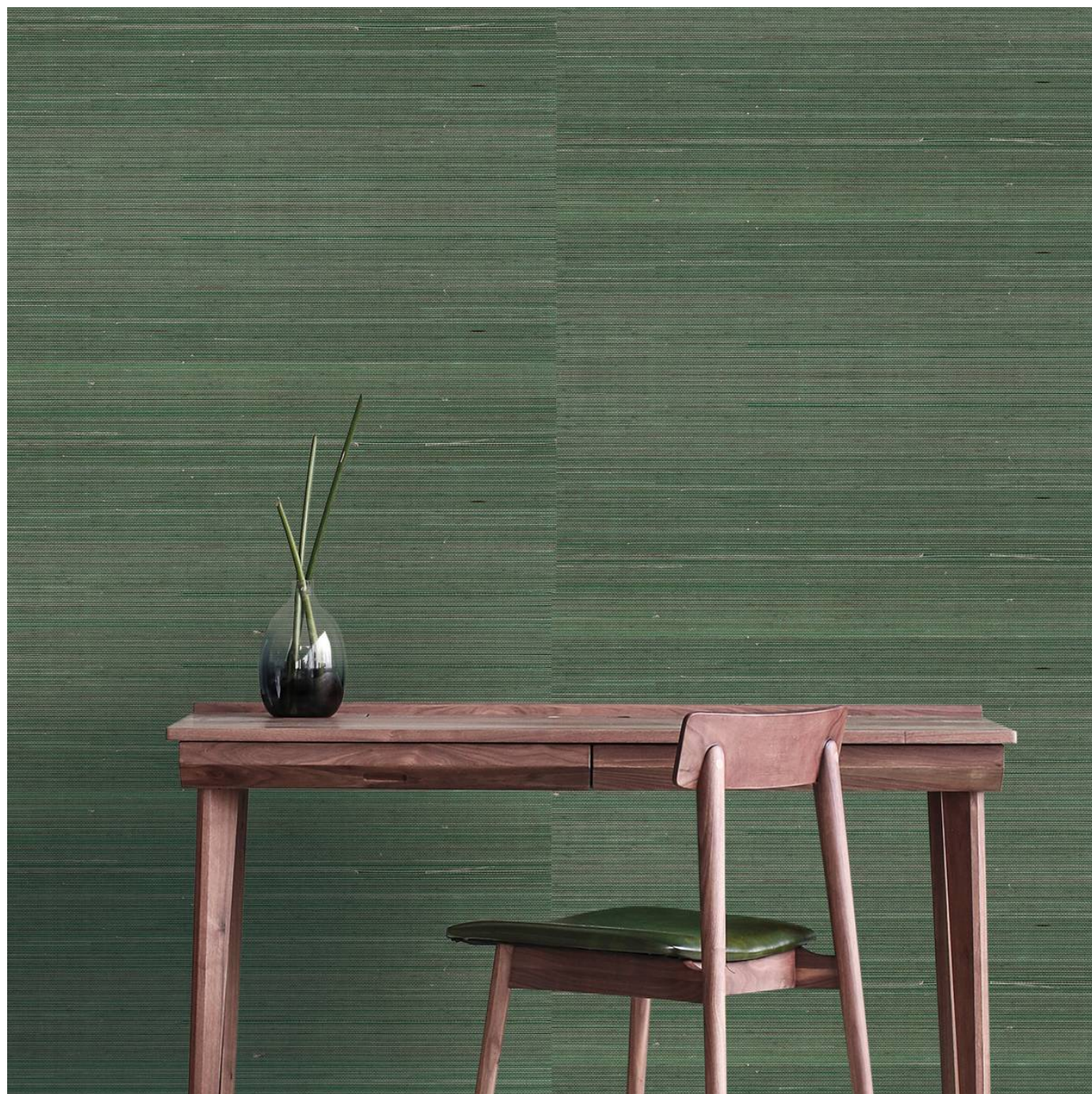


# NASTED IN NATURE

Wallcoverings » Decorative Wallcoverings



Brand: **Bi Mei**

# NASTED IN NATURE

Wallcoverings » Decorative Wallcoverings



G0143NA0022  
BELGIAN BLOCK



G0143NA0064 SILVER



G0143NA0075 DEEP  
SEA



G0143NA0078  
CASTOR GRAY



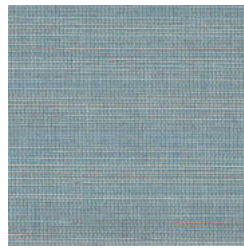
G0143NA0079  
DRIZZLE



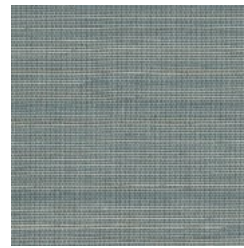
G0143NA0081 QUIET  
GRAY



G0143NA0098  
WATERFORD



G0143NA0101 GREY &  
BLUE



G0143NA0102 TEAL  
LEGACY



G0143NA0160  
VINTAGE KHAKI



G0143NA2055  
OYSTER MUSHROOM



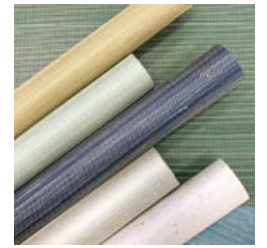
G0143NA2059 SILVER  
GRAY



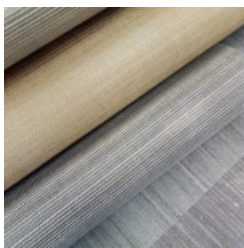
G0143NA2070 MILKY  
GREEN



G0143NA6003 FALL  
LEAF



nasted-in-nature-  
promo-2.jpg



nasted-in-nature-  
promo-4.jpg

# NASTED IN NATURE

Wallcoverings » Decorative Wallcoverings

Nasted in Nature is an environmentally friendly decorative wallcovering with a natural texture that's available in 14 colourways.

Roll Size 91.5cm x 5.5m - Available by the FULL ROLL ONLY

Composition 100% abaca on a non-woven backing

Pattern Repeat Size N/A

Environmental Info The materials contained in these wallcoverings are naturally occurring and renewable resources harvested from farms and coloured with water-based inks.

Fire Rating Tested in accordance with AS ISO 9705 2003 for the purpose of determining the Group Number classification as required by the Building Code of Australia for the control of fire spread on interior wall and ceiling linings.

The result achieved was:  
Classification - Group 2  
Specific Extinction - Less than 250m<sup>2</sup>/kg

Warranty 2-year warranty. Visit [baresque.com.au/warranty](https://www.baresque.com.au/warranty) for complete details.

Lead Time

- 4-weeks (approx) from Wednesday subject to stock availability.
- Additional 1-week for Western Australia.
- Express delivery is available subject to a surcharge. Contact Baresque for details and pricing.

Suggested Installation

Non-reverse hang / butt join.

If your order contains several numbered rolls of one single item/ reference, please first install the roll with the highest number, and then continue to install the other rolls in sequence, in descending order.

Measure and cut 3 strip lengths. Add 5 to 10 cm to top and bottom of each strip.

For printed patterns, plan your match from the roll before cutting

Mark each strip coming from the roll on the back and hang in the same sequence

Reverse alternate lengths when instructed to do so by label on the roll

# NASTED IN NATURE

Wallcoverings » Decorative Wallcoverings

---

## Care Instructions

Always use a clean, white, soft cloth.

Remove liquid stains immediately using a dry cloth. Avoid hard scrubbing.

For tougher stains, dampen the cloth with warm water or a weak dilution of liquid detergent and apply being careful not to soak the material. Always work towards the centre of the stain so as to avoid further spreading.

Remove any detergent with a clean, damp cloth. Gently pat dry.

Always test in an inconspicuous area first.

---

## Additional Comments

As this design is made of natural materials, some variation in colour within and across batches is an inherent, unavoidable and enjoyable characteristic of the product. When installed, some panelling effect will be apparent.

---

# NASTED IN NATURE

Wallcoverings » Decorative Wallcoverings

---

## Colour & Finish Options