

# PASSION FOR ART

Wallcoverings » Decorative Wallcoverings



Brand: **Bi Mei**

# PASSION FOR ART

Wallcoverings » Decorative Wallcoverings



G0153PT1001 NAVY  
ON WHITE ABACA



G0153PT1002 BLUE  
ON NAVY SISAL



G0153PT1003 SILVER  
ON WHITE SISAL



G0153PT1004 NAVY  
ON WHITE SISAL



G0153PT1005 TAN ON  
WHITE ABACA



G0153PT1006 CORAL  
ON WHITE ABACA



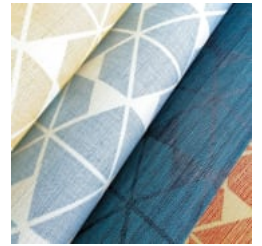
G0153PT1007  
SCARLET ON PORCINI  
SISAL



G0153PT1008 WHITE  
ON COVE SISAL



G0153PT1009  
EGGSHELL ON WHITE  
SISAL



passion-for-art-  
g0153.jpg

# PASSION FOR ART

Wallcoverings » Decorative Wallcoverings

Passion for Art is a 91.5cm wide decorative wallcovering with an overlapped geometric pattern that's available in 9 colourways.

Roll Size 91.5cm x 5.5m - Available by the FULL ROLL ONLY

Composition 100% abaca or sisal on a non-woven backing

Pattern Repeat Size N/A

Environmental Info The materials contained in these wallcoverings are naturally occurring and renewable resources harvested from farms and coloured with water-based inks.

Fire Rating Tested in accordance with AS ISO 9705 2003 for the purpose of determining the Group Number classification as required by the Building Code of Australia for the control of fire spread on interior wall and ceiling linings.

The result achieved was:  
Classification - Group 2  
Specific Extinction - Less than 250m<sup>2</sup>/kg

Warranty 2-year warranty. Visit [baresque.com.au/warranty](https://www.baresque.com.au/warranty) for complete details.

Lead Time

- 4-weeks (approx) from Wednesday subject to stock availability.
- Additional 1-week for Western Australia.
- Express delivery is available subject to a surcharge. Contact Baresque for details and pricing.

Suggested Installation

Non-reverse hang / butt join.

If your order contains several numbered rolls of one single item/ reference, please first install the roll with the highest number, and then continue to install the other rolls in sequence, in descending order.

Measure and cut 3 strip lengths. Add 5 to 10 cm to top and bottom of each strip.

For printed patterns, plan your match from the roll before cutting

Mark each strip coming from the roll on the back and hang in the same sequence

Reverse alternate lengths when instructed to do so by label on the roll

# PASSION FOR ART

Wallcoverings » Decorative Wallcoverings

---

## Care Instructions

Always use a clean, white, soft cloth.

Remove liquid stains immediately using a dry cloth. Avoid hard scrubbing.

For tougher stains, dampen the cloth with warm water or a weak dilution of liquid detergent and apply being careful not to soak the material. Always work towards the centre of the stain so as to avoid further spreading.

Remove any detergent with a clean, damp cloth. Gently pat dry.

Always test in an inconspicuous area first.

---

## Additional Comments

As this design is made of natural materials, some variation in colour within and across batches is an inherent, unavoidable and enjoyable characteristic of the product. When installed, some panelling effect will be apparent.

---

# PASSION FOR ART

Wallcoverings » Decorative Wallcoverings

---

## Colour & Finish Options