

RIVER FUTURE CARVING

Wallcoverings » Decorative Wallcoverings



Brand: **Bi Mei**

1300 306 399

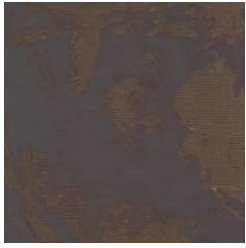
info@baresque.com.au

baresque.com.au

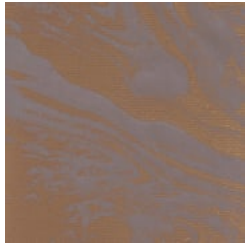
1 of 5

RIVER FUTURE CARVING

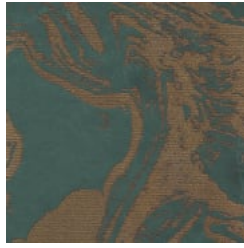
Wallcoverings » Decorative Wallcoverings



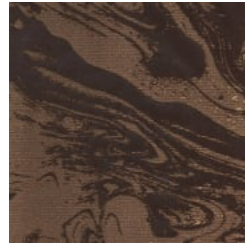
T117TF1606 PICTURE



T117TF1607
TURTLEDOVE



T117TF1608 DARK
BLUE



T117TF1609 THE
BLACK KNIGHT



T117TF1610 RUSTIC
BROWN



T117TF1611 BRU ASH

RIVER FUTURE CARVING

Wallcoverings » Decorative Wallcoverings

River - Future Carving is a 89.5cm wide decorative wallcovering with an abstract design that's available in 6 colourways.

Roll Size Trims to 89.5cm x 10m - Available by the FULL ROLL ONLY

Composition 100% polyester on a non-woven backing 220g/m²

Pattern Repeat Size 93.5cm V / 91.4cm H

Fire Rating Tested in accordance with AS ISO 9705 2003 for the purpose of determining the Group Number classification as required by the Building Code of Australia for the control of fire spread on interior wall and ceiling linings.

The result achieved was:
Classification - Group 2
Specific Extinction - Less than 250m²/kg

Warranty 2-year warranty. Visit [baresque.com.au/warranty](https://www.baresque.com.au/warranty) for complete details.

Lead Time

- 2-weeks (approx.) from Wednesday, subject to stock availability.
- Additional 1-week for Western Australia.
- Express delivery is available subject to a surcharge. Contact Baresque for details and pricing.

Suggested Installation

Non-reverse hang / butt join.

If your order contains several numbered rolls of one single item/ reference, please first install the roll with the highest number, and then continue to install the other rolls in sequence, in descending order.

Measure and cut 3 strip lengths. Add 5 to 10 cm to top and bottom of each strip.

For printed patterns, plan your match from the roll before cutting

Mark each strip coming from the roll on the back and hang in the same sequence

Reverse alternate lengths when instructed to do so by label on the roll

RIVER FUTURE CARVING

Wallcoverings » Decorative Wallcoverings

Care Instructions

Always use a clean, white, soft cloth.

Remove liquid stains immediately using a dry cloth. Avoid hard scrubbing.

For tougher stains, dampen the cloth with warm water or a weak dilution of liquid detergent and apply being careful not to soak the material. Always work towards the centre of the stain so as to avoid further spreading.

Remove any detergent with a clean, damp cloth. Gently pat dry.

Always test in an inconspicuous area first.

RIVER FUTURE CARVING

Wallcoverings » Decorative Wallcoverings

Colour & Finish Options