

STRIE

Wallcoverings » Commercial Wallcoverings



Brand: **Xorel**

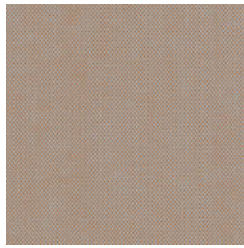
STRIE

Wallcoverings » Commercial Wallcoverings

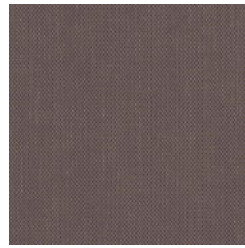
COLOURWAY CARD



6423 800



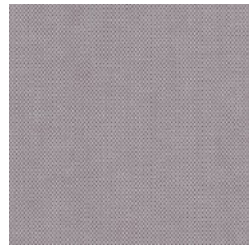
6423 801



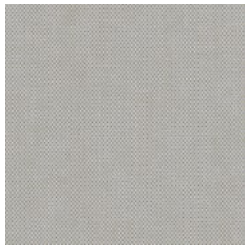
6423 802



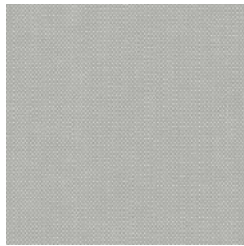
6423 803



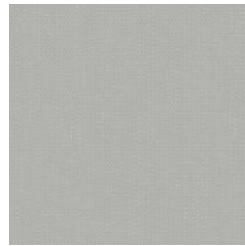
6423 804



6423 805



6423 806



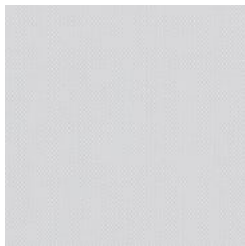
6423 807



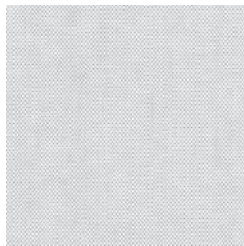
6423 808



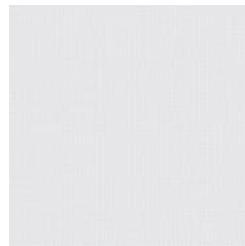
6423 809



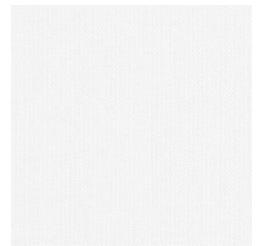
6423 810



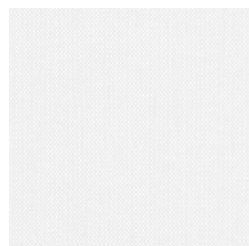
6423 811



6423 812



6423 813



6423 814



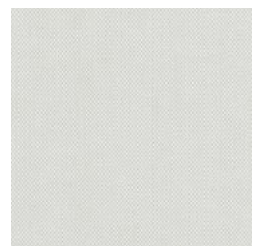
6423 815



6423 816



6423 817



6423 818



6423 819



6423 820



6423 821



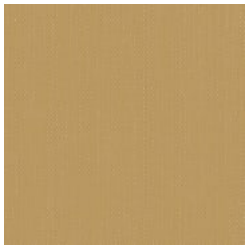
6423 822



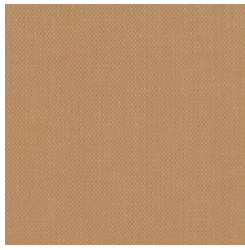
6423 823

STRIE

Wallcoverings » Commercial Wallcoverings



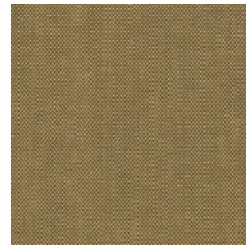
6423 824



6423 825



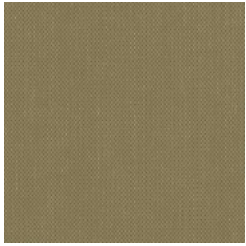
6423 826



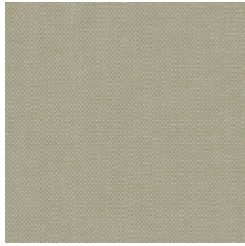
6423 827



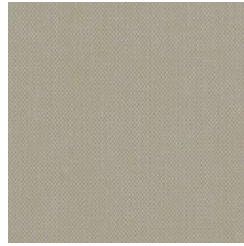
6423 828



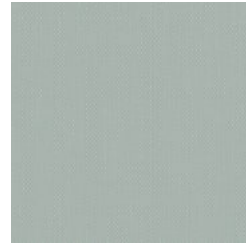
6423 829



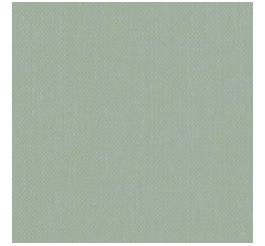
6423 830



6423 831



6423 832



6423 833



6423-834



6423-835



6423-836



6423-837



6423-838



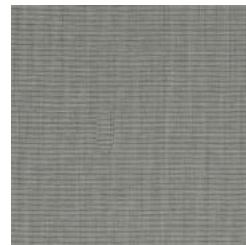
6423-839



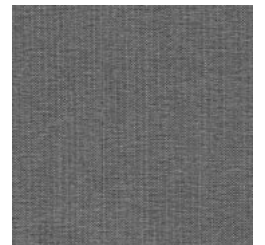
6423-840



6423-841



6423-842



6423-843



6423-844



6423-845



6423-846



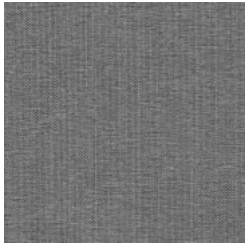
6423-847



6423-848

STRIE

Wallcoverings » Commercial Wallcoverings



6423-849



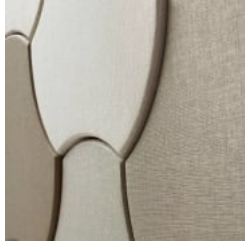
6423-850



6423-851



6423-852



strie-promo-3.jpg

STRIE

Wallcoverings » Commercial Wallcoverings

Strie's subtle texture adds a natural touch. Eco-friendly and tough, ideal for busy rooms. Introducing 19 new colourways.

- ✓ Bleach Cleanable
- ✓ Stain Resistant
- ✓ Sustainable
- ✓ Cradle to Cradle Certified
- ✓ PVC-Free
- ✓ Anti-Bacterial
- ✓ Low VOC
- ✓ Living Product Certified
- ✓ Acoustic

Description Strie has faint striations that bring an organic and flowing essence to this solid weave structure. This biobased pattern is extremely durable and perfect for any high traffic space.

Roll Size Unbacked - 142cm
X-Protect Wall - 132cm
X-Protect Sit - 137cm
Acrylic Backed - 137cm x Approx 60m - available by the lineal metre.
MINIMUM ORDER for X-Protect Sit - 5 lineal metres
MINIMUM ORDER for Acrylic Backed - 15 lineal metres

Composition 100% Xorel (81% Biobases PE,15% PE)

Abrasion 1,000,000 + double rubs Wyzenbeek

Pattern Repeat Size Not Applicable

Environmental Info Xorel's high performance does not come at an environmental cost as it achieves high standards for sustainability.

All testing/certifying is done by third party independent organizations including:- Scientific Certification Systems (SCS) – Indoor Air Quality (GOLD)- Vincotte – Biobased Content (LEVELS 3/4)- USDA Biobased – Meeting Government Biobased Regulations (PREFERRED)- Cradle to Cradle Institute – Full Lifecycle Assessment (GOLD)- NSF – FACTS certification (NSF 336)

Xorel products can also help a project achieve multiple credits under LEED for commercial interiors:Material Sourcing (Rapidly Renewable Content)Indoor Air Quality (SCS Indoor Advantage Gold)Material Optimization (Cradle to Cradle Gold)Material Transparency (Healthy Product Declaration)

STRIE

Wallcoverings » Commercial Wallcoverings

Fire Rating

As a wallcovering - Tested in accordance with AS/NZS 3837 and AS 5637.1:2015 for the purposes of Group Number Classification as specified in the NCC Volume One Specification C1.10 Clause 4

Classification - Group 1

Specific Extinction - Less than 250 m²/kg

As a fabric - Tested in accordance with AS1530.3

Spread of Flame Index - 0

Smoke Developed Index - 5

Warranty

7-year warranty. Visit [baresque.com.au/warranty](https://www.baresque.com.au/warranty) for complete details.

Lead Time

- 5-weeks (approx) from Wednesday subject to stock availability.
 - Additional 1-week for Western Australia.
 - Unbacked 2-3 weeks.
 - Express delivery is available subject to a surcharge. Contact Baresque for details and pricing
-

Suggested Installation

As a wallcovering - trim selvedge and butt join.

Download the Installation Instructions for details.

Baresque recommends and supply Roman brand adhesives and primers.

How to Specify

1. Colour

2. Backing - Available Unbacked or with X-Protect Wall, X-Protect Sit or Acrylic backings.

Xorel Backings guide:

X - Protect Wall

- 100% Water repellent
- Water / Solvent / Bleach Cleanable (up to 40%). May be cleaned with hospital grade disinfectants.
- Prevents bacterial and fungal strike-through (AATCC 100, ASTM G-21-70, ASTM G-22-76)
- 132 cm wide
- Microvented

Unbacked

- Acoustically transparent (degree varies by pattern, measured by NRC test)
- Highly stable, ability to self heal, yarns can "move back" into position
- Water / Solvent / Diluted Bleach Cleanable (up to 40%). May be cleaned with hospital grade disinfectants.
- 142.2 cm wide

X-Protect Sit

- Complete Moisture barrier
 - Water / Solvent / Bleach Cleanable (up to 40%)
 - May be cleaned with hospital grade disinfectants
 - Prevents bacterial and fungal strike-through (AATCC 100, ASTM G-21-70, ASTM G-22-76)
 - 137 cm wide
-

STRIE

Wallcoverings » Commercial Wallcoverings

Care Instructions

Xorel yarns are non-absorbent; dust and stains cannot penetrate them.

Regular maintenance will keep the fabric looking new for many years. Periodic vacuuming will remove dust that may settle between the yarns.

Most stains that dry between the yarns or on the surface can be eliminated by wiping the fabric with a cloth moistened with hot tap water. Some stains may require additional treatment. These stains can be cleaned with a variety of water or solvent based cleaners.

When using solvent based cleaners on paperbacked Xorel fabric, test on a small area first. Residue from these cleaners must be removed with hot water and a clean sponge. After cleaning, towel dry.

Hardened solids can be removed with stiff brush or a sharp-edged instrument without damaging the fabric. However, the brush or sharp instrument should not be used close to seams.

Hospital grade disinfectant cleaners can be safely used on Xorel fabrics. Always follow the directions for the specific brand being used as contact times may vary depending on the product. Diluted bleach solution (up to 40%) can also be used on Xorel for disinfecting purposes.

Always test in an inconspicuous area first. If care instructions don't deliver the expected results, cease cleaning method immediately and contact Baresque for assistance.

Additional Comments Why Xorel?

Beautiful, Functional and Sustainable

DURABLE

Stands up to abuse in high-traffic areas. 200,000 to 1 million double rubs on the Wyzenbeek Abrasion Test

Colourfast / Lightfast

Solution dyed. Colour not affected by cleaning products (including diluted bleach) or light exposure.

Trackable

Highly tuckable yarns can "move back" into position

EFFORTLESS MAINTANANCE

Stain resistant yarns

Water and stains do not penetrate the extruded yarn.

Easy to Clean

Can be aggressively cleaned with water, solvent, cleaners and diluted bleach.

Inherently Anti-Microbial

Antibacterial, anti-fungal, anti-staph without the use of added finishes.

SUSTAINABLE + INDUSTRY PROVEN

100% PVC Free

Free of PVC, chlorine, plasticizers, heavy metals and ozone depleting chemicals.

Biobased

The world's first Biobased high-performance textile. Biobased Xorel is a true plant-based product with significantly reduced carbon footprint.

Third Party Certified

Cradle to Cradle Gold/Silver, SCS Indoor Air Advantage Gold, NSF - Facts certification (NSF 336), Green Spec, Up to 4 Leed points, Healthy Product Declaration (HPDs) available.

STRIE

Wallcoverings » Commercial Wallcoverings

Colour & Finish Options