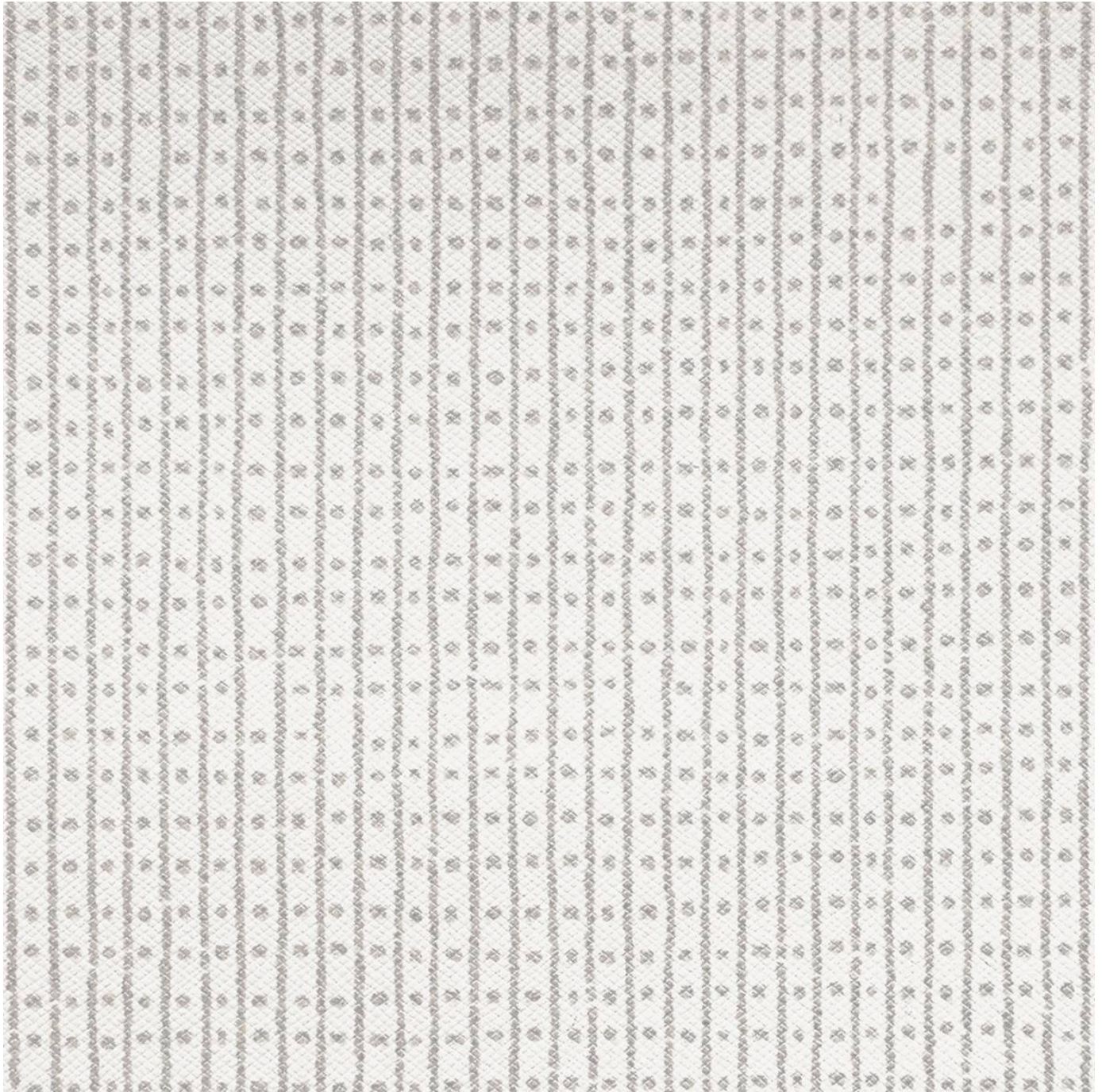


# GRAFFITI

Fabrics » Vinyl and Faux Leather Fabrics



Brand: **Burch**

1300 306 399

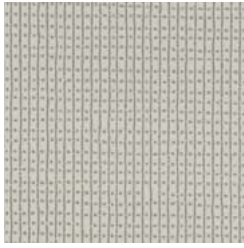
info@baresque.com.au

**baresque.com.au**

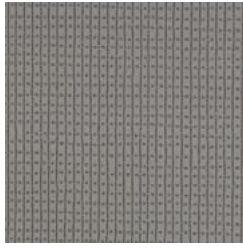
1 of 5

# GRAFFITI

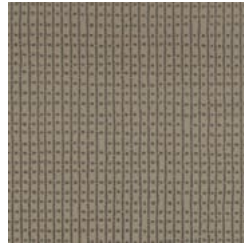
Fabrics » Vinyl and Faux Leather Fabrics



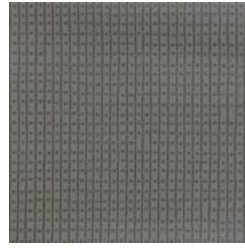
1010351 ARCHIVE



1010352 MERCURY



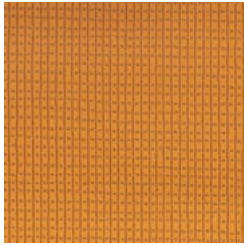
1010353 SMOKE



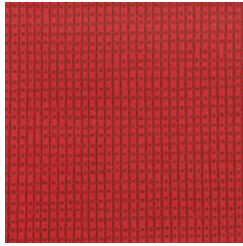
1010354 CHINO



1010355 LUMBER



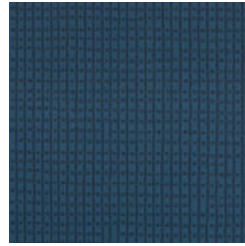
1010356 MARIGOLD



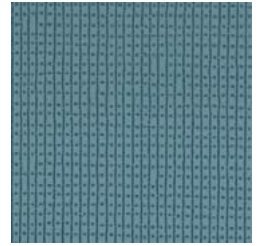
1010357 TORCH



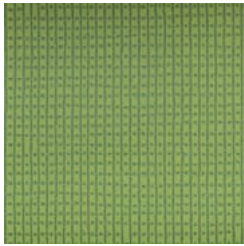
1010358 PLUM



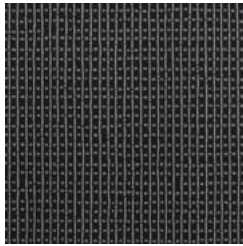
1010359 ATLANTIC



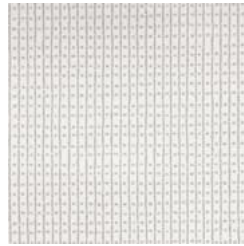
1010360 DIVE



1010361 SPRING



1010362 SILHOUETTE



1010363 WINTER

# GRAFFITI

Fabrics » Vinyl and Faux Leather Fabrics

Graffiti is a 137cm wide vinyl fabric inspired by street art with combination of tonal neutrals and bold primary hues that's available in 5 colourways

✓ **Bleach Cleanable**

✓ **Moisture Barrier**

✓ **PVC-Free**

✓ **Ink Cleanable**

**Description** Graffiti's street art inspired design has a bold and distinctive personality. The colour combinations focus on tonal neutrals and bold primary hues. Graffiti is bleach cleanable when required.

**Roll Size** 137cm wide x 27.4m - Available by the lineal metre

**Composition** 100% polyurethane on a 100% polyester backing

**Abrasion** 100,000+ Double Rubs (Wyzenbeek)

**Pattern Repeat Size** 26.7cm V / 52.7cm H

**Fire Rating** Tested in accordance with AS1530.3

Spread of Flame Index - 0

Smoke Developed Index - 5

**Warranty** 2-year warranty. Visit [baresque.com.au/warranty](https://baresque.com.au/warranty) for complete details.

**Lead Time**

- 2-weeks (approx.) from Wednesday, subject to stock availability.
- Additional 1-week for Western Australia.
- Express delivery is available subject to a surcharge. Contact Baresque for details and pricing.

# GRAFFITI

Fabrics » Vinyl and Faux Leather Fabrics

---

## Care Instructions

Use cloth with any of the following in preferred order of use:

- 1: Clear warm water
- 2: Mild solution of liquid detergent and warm water
- 3: Isopropyl Alcohol (a.k.a. rubbing alcohol)

Remove any detergent with a clean, damp cloth. Gently pat dry.

For more difficult stains, dampen a soft white cloth with a solution of household bleach (10% bleach / 90% water). Rub gently. Rinse with a water dampened cloth to remove bleach concentration.

Do not use solvent based or concentrated abrasive cleaning agents, lacquer thinners or nail polish remover as these may cause discolouration over a period of time.

Always test in an inconspicuous area first.

If care instructions don't deliver the expected results, cease cleaning method immediately and contact Baresque for assistance.

---

# GRAFFITI

Fabrics » Vinyl and Faux Leather Fabrics

---

## Colour & Finish Options