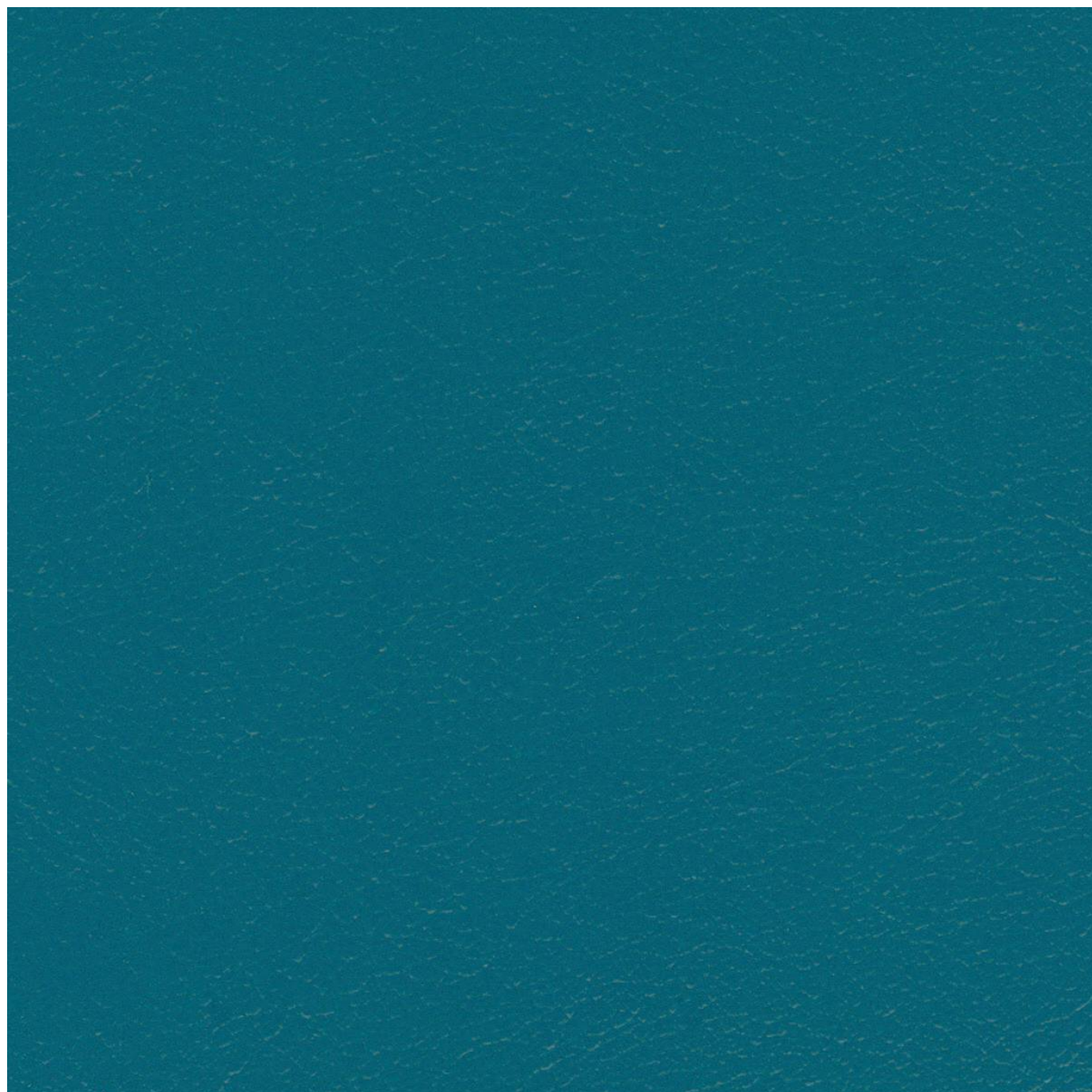


# NAVIGATOR

Fabrics » Vinyl and Faux Leather Fabrics

---



Brand: **United Fabrics**

1300 306 399

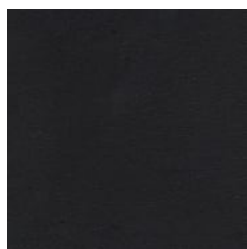
[info@baresque.com.au](mailto:info@baresque.com.au)

[baresque.com.au](http://baresque.com.au)

1 of 5

# NAVIGATOR

Fabrics » Vinyl and Faux Leather Fabrics



NAV-9905  
BLACKBEARD



NAV-9901 BLUE  
RIBBON



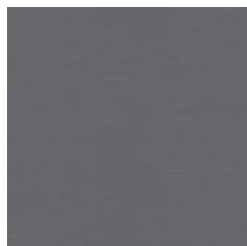
NAV-9899 CAPRI



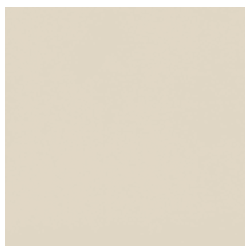
NAV-9902 CELESTIAL



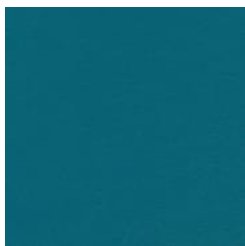
NAV-9904 CRIMSON



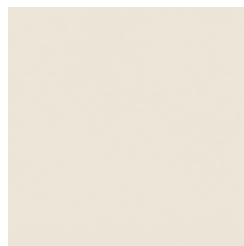
NAV-9898 DOLPHIN



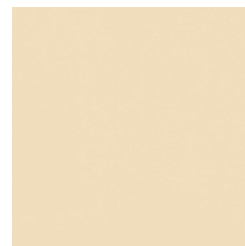
NAV-9892 GLACIER



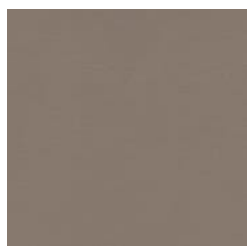
NAV-9900 MERMAID



NAV-9891  
MOONBEAM



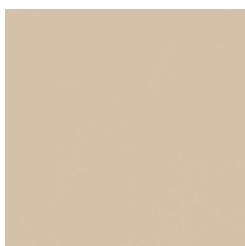
NAV-9894  
PARCHMENT



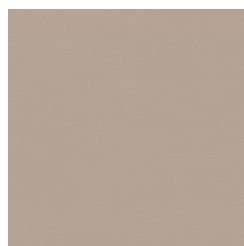
NAV-9897 PEBBLE



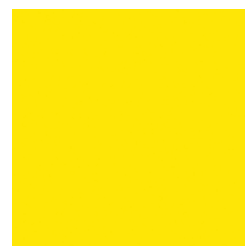
NAV-9907 PURPLE  
PASSION



NAV-9895 SAND  
DOLLAR



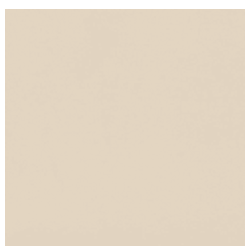
NAV-9896 STONE



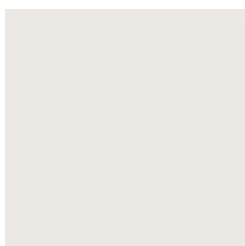
NAV-9906 SUNDANCE



NAV-9903 VALENTINE



NAV-9893 WHITECAP



NAV-9890 SNOW

# NAVIGATOR

Fabrics » Vinyl and Faux Leather Fabrics

Navigator is a 137cm wide vinyl coated fabric with a faux leather texture that's available in 18 colourways.

✓ **Bleach Cleanable**

✓ **Outdoor Suitable**

✓ **Moisture Barrier**

Roll Size 137cm x Approx 50m - Available by the lineal metre

Composition Vinyl face on a 100% polyester Hi Loft 2 backing.

Abrasion 50,000 + double rubs Wyzenbeek

Pattern Repeat Size N/A

Fire Rating Tested in accordance with AS1530.3  
Spread of Flame Index - 0  
Smoke Developed Index - 5

Warranty 2-year warranty. Visit [baresque.com.au/warranty](https://baresque.com.au/warranty) for complete details.

Lead Time

- 2-weeks (approx.) from Wednesday, subject to stock availability.
- Additional 1-week for Western Australia.
- Express delivery is available subject to a surcharge. Contact Baresque for details and pricing.

# NAVIGATOR

Fabrics » Vinyl and Faux Leather Fabrics

---

## Care Instructions

Use cloth with any of the following in preferred order of use:

1: Clear warm water

2: Mild solution of liquid detergent and warm water

3: Isopropyl Alcohol (a.k.a. rubbing alcohol)

Remove any detergent with a clean, damp cloth. Gently pat dry.

For more difficult stains, dampen a soft white cloth with a solution of household bleach (10% bleach / 90% water). Rub gently. Rinse with a water dampened cloth to remove bleach concentration.

Do not use solvent based or concentrated abrasive cleaning agents, lacquer thinners or nail polish remover as these may cause discolouration over a period of time.

Always test in an inconspicuous area first.

If care instructions don't deliver the expected results, cease cleaning method immediately and contact Baresque for assistance.

---

# NAVIGATOR

**Fabrics** » Vinyl and Faux Leather Fabrics

---

## Colour & Finish Options