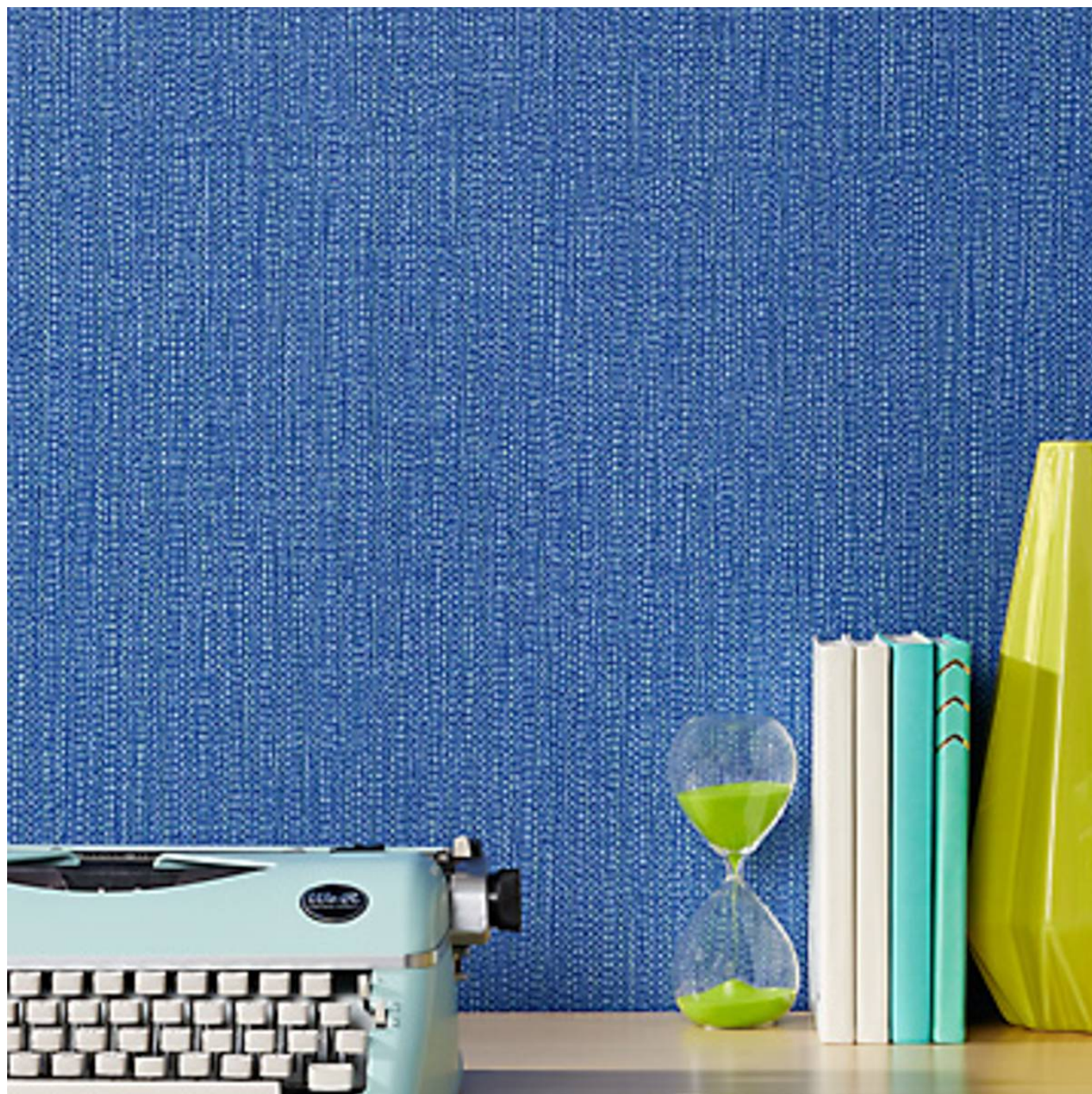


# PERU

Wallcoverings » Commercial Wallcoverings



Brand: **Bolta**

# PERU

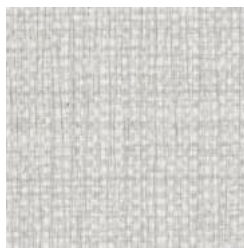
Wallcoverings » Commercial Wallcoverings



BB-PR-01 MAIZE



BB-PR-02 INCAN  
GOLD



BB-PR-07 LECHE



BB-PR-08 WOOLLY  
LLAMA



BB-PR-09 TRAIL  
BLAZER



BB-PR-11 GREY  
CHINCHILLA



BB-PR-12 LIMA  
NIGHTS



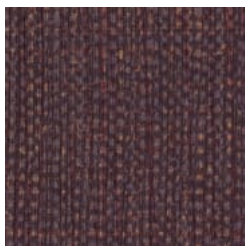
BB-PR-15 AMAZON  
RIVER



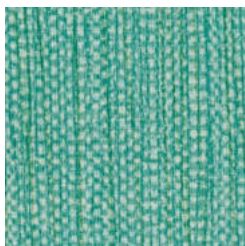
BB-PR-16 SANTA  
ROSE



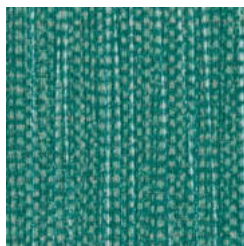
BB-PR-17 MACHU  
PICCHU



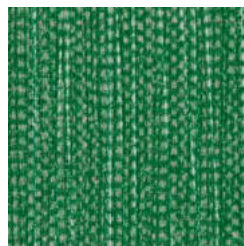
BB-PR-18 DRAGON  
FRUIT



BB-PR-19 LIGHT SEA



BB-PR-20 MYRTLE



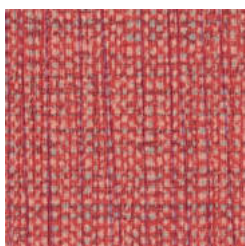
BB-PR-21 FERN



BB-PR-22 HISTORIC  
IVORY



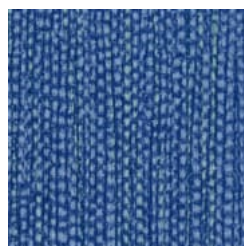
BB-PR-23 SUGAR  
CANE



BB-PR-24  
BITTERSWEET



BB-PR-25 FESTIVAL



BB-PR-26 MAJESTIC

# PERU

Wallcoverings » Commercial Wallcoverings

---

Peru is a 137cm wide commercial wallcovering with an organic texture that's available in 19 colourways. Durable, versatile and free of heavy metals.

✓ **Bleach Cleanable**

---

Roll Size 137cm wide x 27.4m - Available by the lineal metre

---

Composition Vinyl face on a fabric backing 20oz (452 g/m<sup>2</sup>)

---

Pattern Repeat Size N/A

---

Environmental Info

Formaldehyde free

Heavy metals free

Perfluorooctanoic acid free

No solvent inks

Low VOC emissions. Any VOCs dissipate quickly (faster than paint) through normal ventilation and have no recognized adverse impact on indoor air quality.

Durability means products do not need to be replaced regularly due to wear and tear and being cleanable, vinyl products are ideal for helping keep commercial environments clean of bacteria.

Baresque will only deal with vinyl manufacturers that comply with applicable state and federal regulations, provide a factory that is safe and clean for its employees to work in, recycle scrap and inks during the manufacturing process to minimize waste related to production.

---

Fire Rating

Tested in accordance with AS ISO 9705 2003 for the purpose of determining the Group Number classification as required by the Building Code of Australia for the control of fire spread on interior wall and ceiling linings.

The result achieved was:  
Classification - Group 2  
Specific Extinction - Less than 250m<sup>2</sup>/kg

---

Warranty 5-year warranty. Visit [baresque.com.au/warranty](https://www.baresque.com.au/warranty) for complete details.

---

Lead Time

- 2-weeks (approx.) from Wednesday, subject to stock availability.
- Additional 1-week for Western Australia.
- Express delivery is available subject to a surcharge. Contact Baresque for details and pricing.

---

# PERU

Wallcoverings » Commercial Wallcoverings

---

## Suggested Installation

Reverse hang / overlap and double cut.

Baresque recommends and supply Roman brand adhesives and primers.

---

## Care Instructions

Use cloth with any of the following in preferred order of use:

1: Clear warm water

2: Mild solution of liquid detergent and warm water

3: Isopropyl Alcohol (a.k.a. rubbing alcohol)

Remove any detergent with a clean, damp cloth. Gently pat dry.

For more difficult stains, dampen a soft white cloth with a solution of household bleach (10% bleach / 90% water). Rub gently.

Rinse with a water dampened cloth to remove bleach concentration.

Do not use solvent based or concentrated abrasive cleaning agents, lacquer thinners or nail polish remover as these may cause discolouration over a period of time.

Always test in an inconspicuous area first.

If care instructions don't deliver the expected results, cease cleaning method immediately and contact Baresque for assistance.

---

# PERU

Wallcoverings » Commercial Wallcoverings

---

## Colour & Finish Options