

STELLAR CRYPTON

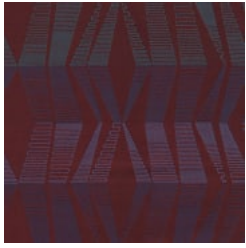
Fabrics » Woven Fabrics



Brand: **Crypton**

STELLAR CRYPTON

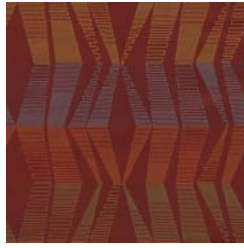
Fabrics » Woven Fabrics



17 Bordeaux



21 Wicker



44 Cider



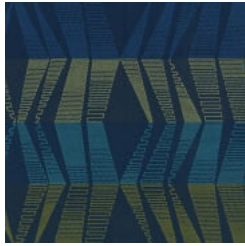
94 Blackbird



902 Lithium



908 Inkwell



3003 Shoreline

STELLAR CRYPTON

Fabrics » Woven Fabrics

STELLAR (Crypton)

✓ **Bleach Cleanable**

✓ **Moisture Barrier**

Description CRYPTON is a permanent moisture, soil resistance and anti-microbial protection backing.

Roll Size 142cm x Approx 45m - 55m - Available by the lineal metre

Composition CRYPTON - 100% polyester

Abrasion 100,000+ double rubs Wyzenbeek

Pattern Repeat Size 35.2cm V / 37.2cm H

Fire Rating Tested in accordance with AS1530.3
Spread of Flame Index - 0
Smoke Developed Index - 5

Warranty 2-year warranty. Visit [baresque.com.au/warranty](https://www.baresque.com.au/warranty) for complete details.

Lead Time

- 2-weeks (approx.) from Wednesday, subject to stock availability.
- Additional 1-week for Western Australia.
- Express delivery is available subject to a surcharge. Contact Baresque for details and pricing.

STELLAR CRYPTON

Fabrics » Woven Fabrics

Care Instructions

Always use a clean, white, soft cloth.

Prepare a mixture of 1/3 Napisan and 2/3 Fab. Combine the mixture with water to make a paste about the consistency of soft margarine i.e. not too runny. Apply using a soft bristle brush. Leave for 10 minutes.

Use a brush and clean, warm water to remove the paste being sure to renew the water so that it remains clean.

Never use stiff bristles or wire brushes, as they may damage the fabric. To prevent soil build-up, frequent vacuuming is recommended.

Using a cloth to pat dry will help eliminate watermarks.

For more difficult stains, dampen a soft white cloth with a solution of household bleach (10% bleach / 90% water). Rub gently. Rinse with a water dampened cloth to remove bleach concentration.

Always test in an inconspicuous area first. If care instructions don't deliver the expected results, cease cleaning method immediately and contact Baresque for assistance.

STELLAR CRYPTON

Fabrics » Woven Fabrics

Colour & Finish Options