

TIMBRE

Wallcoverings » Commercial Wallcoverings



Brand: **Symphony**

TIMBRE

Wallcoverings » Commercial Wallcoverings

COLOURWAY CARD

COLOURWAY CARD



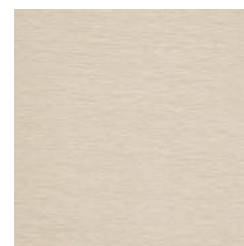
AZ51192 BURNISHED
TAUPE



AZ51193 METALWORK



AZ51195 OXYGEN



AZ51196 MARBLED
WHITE



AZ51198 CHRYSALIS



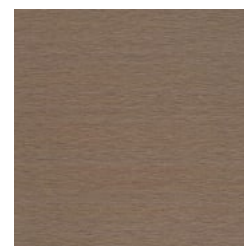
AZ51207 CAPER



AZ51208 BLACKENED
TEAL



AZ51210 DORSAL



AZ51212 PLUM
BRANCH



AZ53000 SOFT MIST



AZ53001 FULL MOON



AZ53002 METEORITE



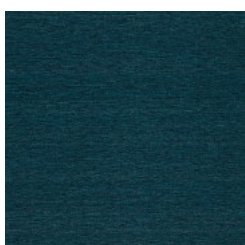
AZ53003 CARBON



AZ53004 CHILLED



AZ53005 AQUARIUM



AZ53006 TROPIC
NIGHT



AZ53007 GREIGE



AZ53008 SANDSTONE



AZ53009 PINE
NEEDLE



AZ53010 ANTIQUE
IVORY



AZ53011 WARM GLOW



AZ53012 DAFFODIL



AZ53013 MANDARIN



AZ53014 DEEP
ORCHID

TIMBRE

Wallcoverings » Commercial Wallcoverings

A sophisticated design with a fibrous look and charming shine.

✓ **Bleach Cleanable**

Description A sophisticated design with a fibrous look and charming shine

Roll Size 137cm wide x 27.4m - Available by the lineal metre

Composition Vinyl face on a fabric backing 20oz (452 g/m²)

Pattern Repeat Size N/A

Environmental Info

Formaldehyde free

Heavy metals free

Perfluorooctanoic acid free

No solvent inks

Low VOC emissions. Any VOCs dissipate quickly (faster than paint) through normal ventilation and have no recognized adverse impact on indoor air quality.

Durability means products do not need to be replaced regularly due to wear and tear and being cleanable, vinyl products are ideal for helping keep commercial environments clean of bacteria.

Baresque will only deal with vinyl manufacturers that comply with applicable state and federal regulations, provide a factory that is safe and clean for its employees to work in, recycle scrap and inks during the manufacturing process to minimize waste related to production.

Fire Rating Tested in accordance with AS ISO 9705 2003 for the purpose of determining the Group Number classification as required by the Building Code of Australia for the control of fire spread on interior wall and ceiling linings.

The result achieved was:
Classification - Group 2
Specific Extinction - Less than 250m²/kg

Warranty 5-year warranty. Visit [baresque.com.au/warranty](https://www.baresque.com.au/warranty) for complete details.

TIMBRE

Wallcoverings » Commercial Wallcoverings

Lead Time

- 2-weeks (approx.) from Wednesday, subject to stock availability.
- Additional 1-week for Western Australia.
- Express delivery is available subject to a surcharge. Contact Baresque for details and pricing.

Suggested Installation

Reverse hang / overlap and double cut.

Baresque recommends and supply Roman brand adhesives and primers.

Care Instructions

Use cloth with any of the following in preferred order of use:

- 1: Clear warm water
- 2: Mild solution of liquid detergent and warm water
- 3: Isopropyl Alcohol (a.k.a. rubbing alcohol)

Remove any detergent with a clean, damp cloth. Gently pat dry.

For more difficult stains, dampen a soft white cloth with a solution of household bleach (10% bleach / 90% water). Rub gently.

Rinse with a water dampened cloth to remove bleach concentration.

Do not use solvent based or concentrated abrasive cleaning agents, lacquer thinners or nail polish remover as these may cause discolouration over a period of time.

Always test in an inconspicuous area first.

If care instructions don't deliver the expected results, cease cleaning method immediately and contact Baresque for assistance.

Additional Comments

As Timbre is a random pattern designed to replicate a natural grassweave, some panelling effect on installation is an unavoidable characteristic of this product.

TIMBRE

Wallcoverings » Commercial Wallcoverings

Colour & Finish Options