

ALLEY CAT

Wallcoverings » Commercial Wallcoverings



Brand: **Versa**

ALLEY CAT

Wallcoverings » Commercial Wallcoverings

COLOURWAY CARD

COLOURWAY CARD



A176-054
DOWNTOWN MYLAR



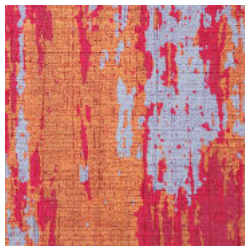
A176-107 COCONUT



A176-329 TIDAL WAVE



A176-333 ROCK STAR



A176-410 FUCHSIA



A176-567 BOHO CHIC



A176-594 GREYFITTI



A176-818 ANTIGUA



A176-852 STONE
WASH



A176-762 COUGAR

ALLEY CAT

Wallcoverings » Commercial Wallcoverings

Alley Cat is a 137cm wide wallcovering with a time-worn, artisanal appeal striking variegated, irregular brush strokes that's available in 10 colours.

✓ **Bleach Cleanable**

Description Like weathered wood or stained concrete, Alley Cat has time-worn, artisanal appeal. Visually striking variegated, irregular brush strokes add movement and dimensionality to the wall. Ten inventive colour palettes project industrial chic, weathered nature and rhythmic watercolour effects.

Roll Size 132/137cm x 27.4m - Available by the lineal metre.

Composition Vinyl face on a fabric backing except A176-054 and A176-762

Environmental Info

- Formaldehyde free
- Heavy metals free
- Perfluorooctanoic acid free
- No solvent inks

Low VOC emissions. Any VOCs dissipate quickly (faster than paint) through normal ventilation and have no recognized adverse impact on indoor air quality.

Durability means products do not need to be replaced regularly due to wear and tear and being cleanable, vinyl products are ideal for helping keep commercial environments clean of bacteria.

Baresque will only deal with vinyl manufacturers that comply with applicable state and federal regulations, provide a factory that is safe and clean for its employees to work in, recycle scrap and inks during the manufacturing process to minimize waste related to production.

Warranty 5-year warranty. Visit [baresque.com.au/warranty](https://www.baresque.com.au/warranty) for complete details.

Suggested Installation Non reverse hang/overlap double cut.

Baresque recommends and supplies Roman brand adhesives and primers.

ALLEY CAT

Wallcoverings » Commercial Wallcoverings

Care Instructions

Always use a clean, white, soft cloth.

Use cloth with any of the following in preferred order of us:

1: Clear warm water

2: Mild solution of liquid detergent and warm water

3: Isopropyl Alcohol (a.k.a. rubbing alcohol)

Remove any detergent with a clean, damp cloth. Gently pat dry.

For more difficult stains, dampen a soft white cloth with a solution of household bleach (10% bleach / 90% water). Rub gently.

Rinse with a water dampened cloth to remove bleach concentration.

DO NOT USE solvent based or concentrated abrasive cleaning agents, lacquer thinners, nail polish remover as these may cause discolouration over a period of time.

Always test in an inconspicuous area first. If care instructions don't deliver the expected results, cease cleaning method immediately and contact Baresque for assistance.

ALLEY CAT

Wallcoverings » Commercial Wallcoverings

Colour & Finish Options