

# ON POINTE PETITE

Wallcoverings » Commercial Wallcoverings



Brand: **Symphony**

1300 306 399

[info@baresque.com.au](mailto:info@baresque.com.au)

[baresque.com.au](http://baresque.com.au)

1 of 5

# ON POINTE PETITE

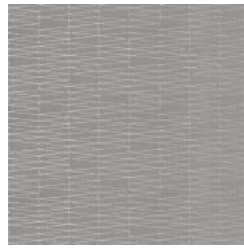
Wallcoverings » Commercial Wallcoverings

## COLOURWAY CARD

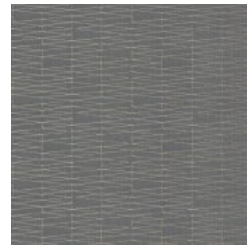
COLOURWAY CARD



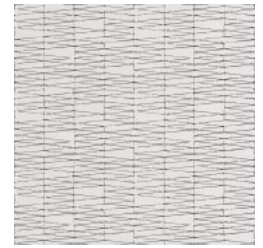
AZ53595 WHITE LIGHTS



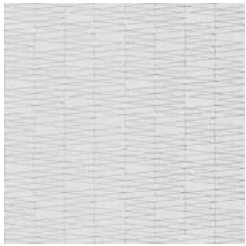
AZ53596 MOONDANCE



AZ53597 CLASSICAL CHARCOAL



AZ53598 LIGHTS OUT



AZ53599 SILVER SONG



AZ53600 ON TOUR TAUPE



AZ53601 CHIFFON TUTU



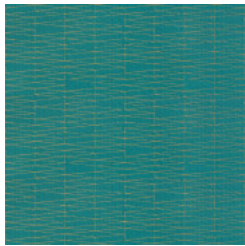
AZ53602 DUSK DUET



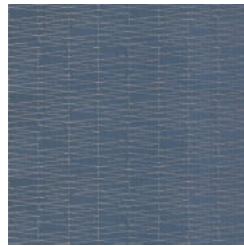
AZ53603 BOX OFFICE BRONZE



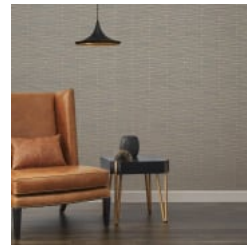
AZ53604 PINK HEADLINER



AZ53605 SUPERSTAR TEAL



AZ53606 SAPPHIRE SOLO



on-pointe-petite-promo-2.jpg

# ON POINTE PETITE

Wallcoverings » Commercial Wallcoverings

On Point Petite is a 137cm wide wallcovering with a geometric line pattern, available in 12 colours. It's durable, free of heavy metals and low VOC.

✓ **Bleach Cleanable**

Roll Size 137cm wide x 27.4m - Available by the lineal metre

Composition Vinyl face on a fabric backing. Equivalent to 20oz (452 g/m<sup>2</sup>)

Pattern Repeat Size 45cm V

Environmental Info

Formaldehyde free

Heavy metals free

Perfluorooctanoic acid free

No solvent inks

Low VOC emissions. Any VOCs dissipate quickly (faster than paint) through normal ventilation and have no recognized adverse impact on indoor air quality.

Durability means products do not need to be replaced regularly due to wear and tear and being cleanable, vinyl products are ideal for helping keep commercial environments clean of bacteria.

Baresque will only deal with vinyl manufacturers that comply with applicable state and federal regulations, provide a factory that is safe and clean for its employees to work in, recycle scrap and inks during the manufacturing process to minimize waste related to production.

Fire Rating

Tested in accordance with AS ISO 9705 2003 for the purpose of determining the Group Number classification as required by the Building Code of Australia for the control of fire spread on interior wall and ceiling linings.

The result achieved was:  
Classification - Group 2  
Specific Extinction - Less than 250m<sup>2</sup>/kg

Warranty 5-year warranty. Visit [baresque.com.au/warranty](https://www.baresque.com.au/warranty) for complete details.

Lead Time

- 2-weeks (approx.) from Wednesday, subject to stock availability.
- Additional 1-week for Western Australia.
- Express delivery is available subject to a surcharge. Contact Baresque for details and pricing.

# ON POINTE PETITE

Wallcoverings » Commercial Wallcoverings

---

## Suggested Installation

Non reverse hang/overlap double cut.

Baresque recommends and supplies Roman brand adhesives and primers.

---

## Care Instructions

Use cloth with any of the following in preferred order of use:

1: Clear warm water

2: Mild solution of liquid detergent and warm water

3: Isopropyl Alcohol (a.k.a. rubbing alcohol)

Remove any detergent with a clean, damp cloth. Gently pat dry.

For more difficult stains, dampen a soft white cloth with a solution of household bleach (10% bleach / 90% water). Rub gently.

Rinse with a water dampened cloth to remove bleach concentration.

Do not use solvent based or concentrated abrasive cleaning agents, lacquer thinners or nail polish remover as these may cause discolouration over a period of time.

Always test in an inconspicuous area first.

If care instructions don't deliver the expected results, cease cleaning method immediately and contact Baresque for assistance.

---

# ON POINTE PETITE

Wallcoverings » Commercial Wallcoverings

---

## Colour & Finish Options