

PINSTRIPED HYPE

Wallcoverings » Commercial Wallcoverings



Brand: **Bolta**

1300 306 399

info@baresque.com.au

baresque.com.au

1 of 5

PINSTRIBE HYPE

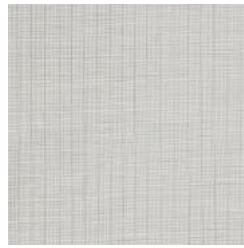
Wallcoverings » Commercial Wallcoverings

COLOURWAY CARD

COLOURWAY CARD



BB-PH-01 SALT & PEPPER



BB-PH-02 WHITE SATIN



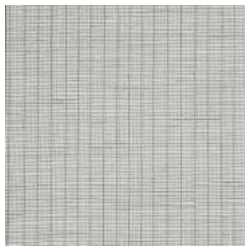
BB-PH-03 FRESH DEW



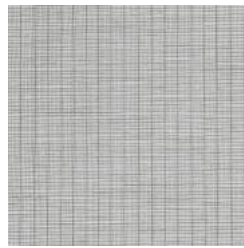
BB-PH-04 MINT SAGE



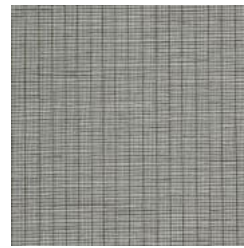
BB-PH-05 EVERGREEN



BB-PH-06 CHALK LINES



BB-PH-07 SOLAR PANEL



BB-PH-08 STEEL BLUE



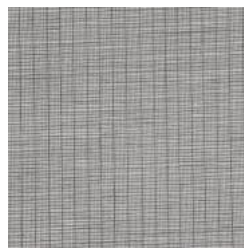
BB-PH-09 NAVY BLINDS



BB-PH-10 FINE CHIFFON



BB-PH-11 SOFT CASHMERE



BB-PH-12 GREY SHUTTERS



BB-PH-13 BORDERLINE ASH



BB-PH-14 ROSE WINE



BB-PH-15 SMOKEY TAUPE



BB-PH-16 TOASTED ALMONDS



BB-PH-17 BAMBOO PYTHON



BB-PH-18 CREAMY GOLD



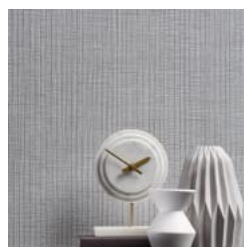
BB-PH-19 HONEY MUSTARD



BB-PH-20 ACORN



BB-PH-21 CAJUN SPICE



pinstripe-hype-promo-2.jpg

PINSTRIBE HYPE

Wallcoverings » Commercial Wallcoverings

Pinstripe Hype is a 137cm wide commercial wallcovering with a textured woven look and pinstripe pattern that's available in 21 colourways.

✓ **Bleach Cleanable**

Roll Size 137cm wide x 27.4m - Available by the lineal metre

Composition Vinyl face on a fabric backing. Equivalent to 20oz (452 g/m²)

Pattern Repeat Size N/A

Environmental Info Formaldehyde free

Heavy metals free

Perfluorooctanoic acid free

No solvent inks

Low VOC emissions. Any VOCs dissipate quickly (faster than paint) through normal ventilation and have no recognized adverse impact on indoor air quality.

Durability means products do not need to be replaced regularly due to wear and tear and being cleanable, vinyl products are ideal for helping keep commercial environments clean of bacteria.

Baresque will only deal with vinyl manufacturers that comply with applicable state and federal regulations, provide a factory that is safe and clean for its employees to work in, recycle scrap and inks during the manufacturing process to minimize waste related to production.

Fire Rating Tested in accordance with AS ISO 9705 2003 for the purpose of determining the Group Number classification as required by the Building Code of Australia for the control of fire spread on interior wall and ceiling linings.

The result achieved was:

Classification - Group 2

Specific Extinction - Less than 250m²/kg

Warranty 5-year warranty. Visit [baresque.com.au/warranty](https://www.baresque.com.au/warranty) for complete details.

Lead Time

- 2-weeks (approx.) from Wednesday, subject to stock availability.
- Additional 1-week for Western Australia.
- Express delivery is available subject to a surcharge. Contact Baresque for details and pricing.

PINSTRIPE HYPE

Wallcoverings » Commercial Wallcoverings

Suggested Installation

Reverse hang / overlap and double cut.

Baresque recommends and supply Roman brand adhesives and primers.

Care Instructions

Use cloth with any of the following in preferred order of use:

1: Clear warm water

2: Mild solution of liquid detergent and warm water

3: Isopropyl Alcohol (a.k.a. rubbing alcohol)

Remove any detergent with a clean, damp cloth. Gently pat dry.

For more difficult stains, dampen a soft white cloth with a solution of household bleach (10% bleach / 90% water). Rub gently.

Rinse with a water dampened cloth to remove bleach concentration.

Do not use solvent based or concentrated abrasive cleaning agents, lacquer thinners or nail polish remover as these may cause discolouration over a period of time.

Always test in an inconspicuous area first.

If care instructions don't deliver the expected results, cease cleaning method immediately and contact Baresque for assistance.

PINSTRIPE HYPE

Wallcoverings » Commercial Wallcoverings

Colour & Finish Options