

LINEN SHADES OF PALE

Wallcoverings » Decorative Wallcoverings



Brand: **Omexco**

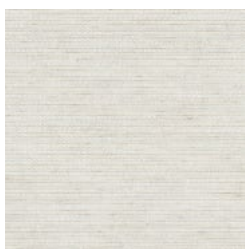
Collection: **Shades of Pale**

LINEN SHADES OF PALE

Wallcoverings » Decorative Wallcoverings



SOP 2071



SOP2072



SOP 2073



SOP 2074



SOP 5071



SOP 5072

LINEN SHADES OF PALE

Wallcoverings » Decorative Wallcoverings

Referring to Japanese philosophy, Shades of Pale pays tribute to a return to craftsmanship and the use of ancestral techniques that's full of meaning

✓ **Environmentally Friendly**

✓ **Light Resistance**

Description Shades of Pale invites you to accept imperfections and to value materials carrying the signature of their manufacturing process, without camouflaging marks, joints, patina. Go back to the essence, the elegance of natural material, without affecting its poetic charm.

Product Code WC.LINE.SHA.SOP207

Roll Size SOP2 - 129cm SOP5 - 91cm x N/A - Available by the lineal metre

Weight 401 g/m²

Composition Linen on a non-woven backing

Environmental Info The materials contained in these wallcoverings are naturally occurring and renewable resources harvested from farms and coloured with water-based inks.

Fire Rating Tested in accordance with AS ISO 9705 2003 for the purpose of determining the Group Number classification as required by the Building Code of Australia for the control of fire spread on interior wall and ceiling linings.

The result achieved was:
Classification - Group 2
Specific Extinction - Less than 250m²/kg

Warranty 2-year warranty. Visit [baresque.com.au/warranty](https://www.baresque.com.au/warranty) for complete details.

Lead Time

- 2-weeks (approx.) from Wednesday, subject to stock availability.
- Additional 1-week for Western Australia.
- Express delivery is available subject to a surcharge. Contact Baresque for details and pricing.

LINEN SHADES OF PALE

Wallcoverings » Decorative Wallcoverings

Suggested Installation

Non-reverse hang / butt join.

If your order contains several numbered rolls of one single item/ reference, please first install the roll with the highest number, and then continue to install the other rolls in sequence, in descending order.

Measure and cut 3 strip lengths. Add 5 to 10 cm to top and bottom of each strip.

For printed patterns, plan your match from the roll before cutting

Mark each strip coming from the roll on the back and hang in the same sequence

Reverse alternate lengths when instructed to do so by label on the roll

Care Instructions

Natural wallcoverings should be handled with care, as they are not stain repellent treated.

Remove liquid stains immediately using a clean, white, soft, dry cloth tapping on the wallcovering lightly.

Use a vacuum cleaner to lightly remove any dust that may have collected.

Cleaning with water or detergent is not recommended.

Always test in an inconspicuous area first. If care instructions don't deliver the expected results, cease cleaning method immediately and contact Baresque for assistance.

LINEN SHADES OF PALE

Wallcoverings » Decorative Wallcoverings

Colour & Finish Options