

# MAGIC COLOUR BLUES

Wallcoverings » Decorative Wallcoverings



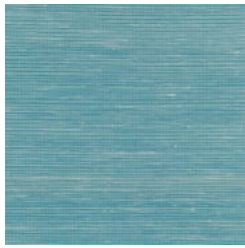
Brand: **Bi Mei**

# MAGIC COLOUR BLUES

Wallcoverings » Decorative Wallcoverings



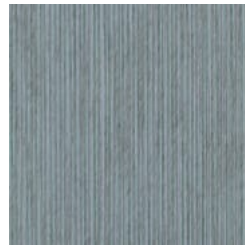
SN101003P WATER  
BLUE



SN101004P PACIFIC



SN101006P  
TURQUOISE



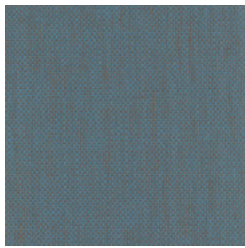
SN101007P GALL



SN101008P BLUE-  
GREEN



SN101012P WINTER  
DUSK



SN101014P  
TUNGSTEN



SN101015P NAVE



ST101001P HORIZON



ST101002P ICE BLUE



ST101005P  
RAINSTORM



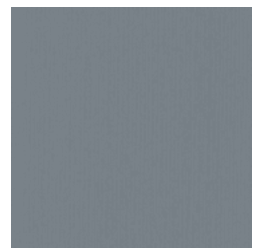
ST101009P CYANINE



ST101010P DARK  
BLUE



ST101011P MUD



ST101013P LIGHT  
BLUE

# MAGIC COLOUR BLUES

Wallcoverings » Decorative Wallcoverings

Magic Colour decorative wallcoverings are an environmentally friendly way to add texture. Available in 15 blue hues.

**Description** Natural wallpapers are an environmentally friendly way to add texture and beauty to a wide variety of design themes.

**Composition** Various. See Magic Colour Product Specification Download for details

**Environmental Info** The materials contained in these wallcoverings are naturally occurring and renewable resources harvested from farms and coloured with water-based inks.

**Warranty** 2-year warranty. Visit [baresque.com.au/warranty](https://www.baresque.com.au/warranty) for complete details.

**Suggested Installation** Non-reverse hang / butt join.

If your order contains several numbered rolls of one single item/ reference, please first install the roll with the highest number, and then continue to install the other rolls in sequence, in descending order.

Measure and cut 3 strip lengths. Add 5 to 10 cm to top and bottom of each strip.

For printed patterns, plan your match from the roll before cutting

Mark each strip coming from the roll on the back and hang in the same sequence

Reverse alternate lengths when instructed to do so by label on the roll

**Care Instructions** Natural wallcoverings should be handled with care, as they are not stain repellent treated.

Remove liquid stains immediately using a clean, white, soft, dry cloth tapping on the wallcovering lightly.

Use a vacuum cleaner to lightly remove any dust that may have collected.

Cleaning with water or detergent is not recommended.

Always test in an inconspicuous area first. If care instructions don't deliver the expected results, cease cleaning method immediately and contact Baresque for assistance.

**Additional Comments** As this design is made of natural materials, some variation in colour within and across batches is an inherent, unavoidable and enjoyable characteristic of the product. When installed, some panelling effect will be apparent.

# MAGIC COLOUR BLUES

Wallcoverings » Decorative Wallcoverings

---

## Colour & Finish Options