

# MAGIC COLOUR CHARCOALS

Wallcoverings » Decorative Wallcoverings



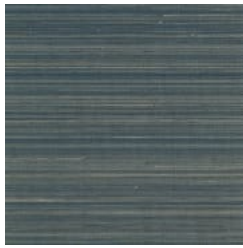
Brand: **Bi Mei**

# MAGIC COLOUR CHARCOALS

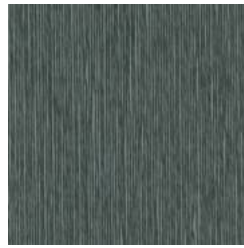
Wallcoverings » Decorative Wallcoverings



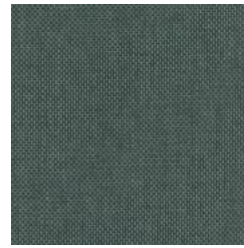
SN101211P THE THIN  
INK



SN101212P BLUE-  
BLACK



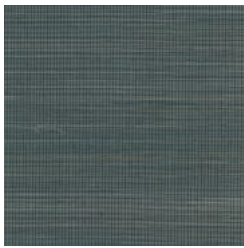
SN101213P SHADOW  
OF BLACK



SN101215P DARKNESS



SN101216P LIVIDITY



SN101217P BESCON



SN101218P ARMOR  
BLACK



SN101219P SILVER



SN101220P MATURE



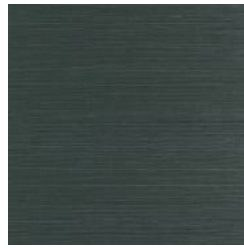
SN101221P  
INDIFFERENCE



SN101222P DEEP  
DIANE



SN101223P LOW KEY



SN101224 CARBON  
BLACK CRYSTAL



ST101214P PITCH-  
DARK



ST101225 BLACK

# MAGIC COLOUR CHARCOALS

Wallcoverings » Decorative Wallcoverings

Magic Colour decorative wallcoverings are an environmentally friendly way to add texture. Available in 14 brown hues.

**Description** Natural wallpapers are an environmentally friendly way to add texture and beauty to a wide variety of design themes.

**Composition** Various. See Magic Colour Product Specification Download for details

**Environmental Info** The materials contained in these wallcoverings are naturally occurring and renewable resources harvested from farms and coloured with water-based inks.

**Warranty** 2-year warranty. Visit [baresque.com.au/warranty](https://www.baresque.com.au/warranty) for complete details.

**Suggested Installation** Non-reverse hang / butt join.

If your order contains several numbered rolls of one single item/ reference, please first install the roll with the highest number, and then continue to install the other rolls in sequence, in descending order.

Measure and cut 3 strip lengths. Add 5 to 10 cm to top and bottom of each strip.

For printed patterns, plan your match from the roll before cutting

Mark each strip coming from the roll on the back and hang in the same sequence

Reverse alternate lengths when instructed to do so by label on the roll

**Care Instructions** Natural wallcoverings should be handled with care, as they are not stain repellent treated.

Remove liquid stains immediately using a clean, white, soft, dry cloth tapping on the wallcovering lightly.

Use a vacuum cleaner to lightly remove any dust that may have collected.

Cleaning with water or detergent is not recommended.

Always test in an inconspicuous area first. If care instructions don't deliver the expected results, cease cleaning method immediately and contact Baresque for assistance.

**Additional Comments** As this design is made of natural materials, some variation in colour within and across batches is an inherent, unavoidable and enjoyable characteristic of the product. When installed, some panelling effect will be apparent.

# MAGIC COLOUR CHARCOALS

Wallcoverings » Decorative Wallcoverings

---

## Colour & Finish Options