

# MAGIC COLOUR GOLDS

Wallcoverings » Decorative Wallcoverings



Brand: **Bi Mei**

# MAGIC COLOUR GOLDS

Wallcoverings » Decorative Wallcoverings



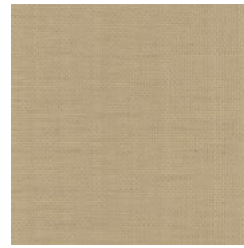
SN101076P BUTTER



SN101077P VANILLA



SN101078P EGG



SN101080P  
LEMONSAUCE



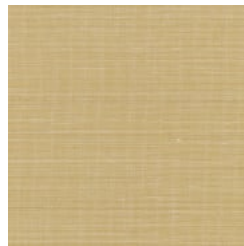
SN101081P BANANA



SN101082P BLOND



SN101083P STOVE



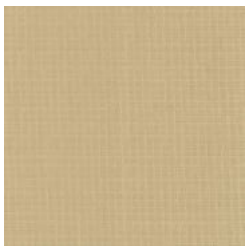
SN101084P HOPS



SN101085P BARLEY



SN101086P HAUIM



SN101087P TOPAZ



SN101088P ARMENIA  
PAPER



SN101090P  
CHAMPAGNE



ST101079P SAND



ST101089P QUINOA  
COLOR

# MAGIC COLOUR GOLDS

Wallcoverings » Decorative Wallcoverings

Magic Colour decorative wallcoverings are an environmentally friendly way to add texture. Available in 15 gold hues.

**Description** Natural wallpapers are an environmentally friendly way to add texture and beauty to a wide variety of design themes.

**Composition** Various. See Magic Colour Product Specification Download for details

**Environmental Info** The materials contained in these wallcoverings are naturally occurring and renewable resources harvested from farms and coloured with water-based inks.

**Warranty** 2-year warranty. Visit [baresque.com.au/warranty](https://www.baresque.com.au/warranty) for complete details.

**Suggested Installation** Non-reverse hang / butt join.

If your order contains several numbered rolls of one single item/ reference, please first install the roll with the highest number, and then continue to install the other rolls in sequence, in descending order.

Measure and cut 3 strip lengths. Add 5 to 10 cm to top and bottom of each strip.

For printed patterns, plan your match from the roll before cutting

Mark each strip coming from the roll on the back and hang in the same sequence

Reverse alternate lengths when instructed to do so by label on the roll

**Care Instructions** Natural wallcoverings should be handled with care, as they are not stain repellent treated.

Remove liquid stains immediately using a clean, white, soft, dry cloth tapping on the wallcovering lightly.

Use a vacuum cleaner to lightly remove any dust that may have collected.

Cleaning with water or detergent is not recommended.

Always test in an inconspicuous area first. If care instructions don't deliver the expected results, cease cleaning method immediately and contact Baresque for assistance.

**Additional Comments** As this design is made of natural materials, some variation in colour within and across batches is an inherent, unavoidable and enjoyable characteristic of the product. When installed, some panelling effect will be apparent.

# MAGIC COLOUR GOLDS

Wallcoverings » Decorative Wallcoverings

---

## Colour & Finish Options